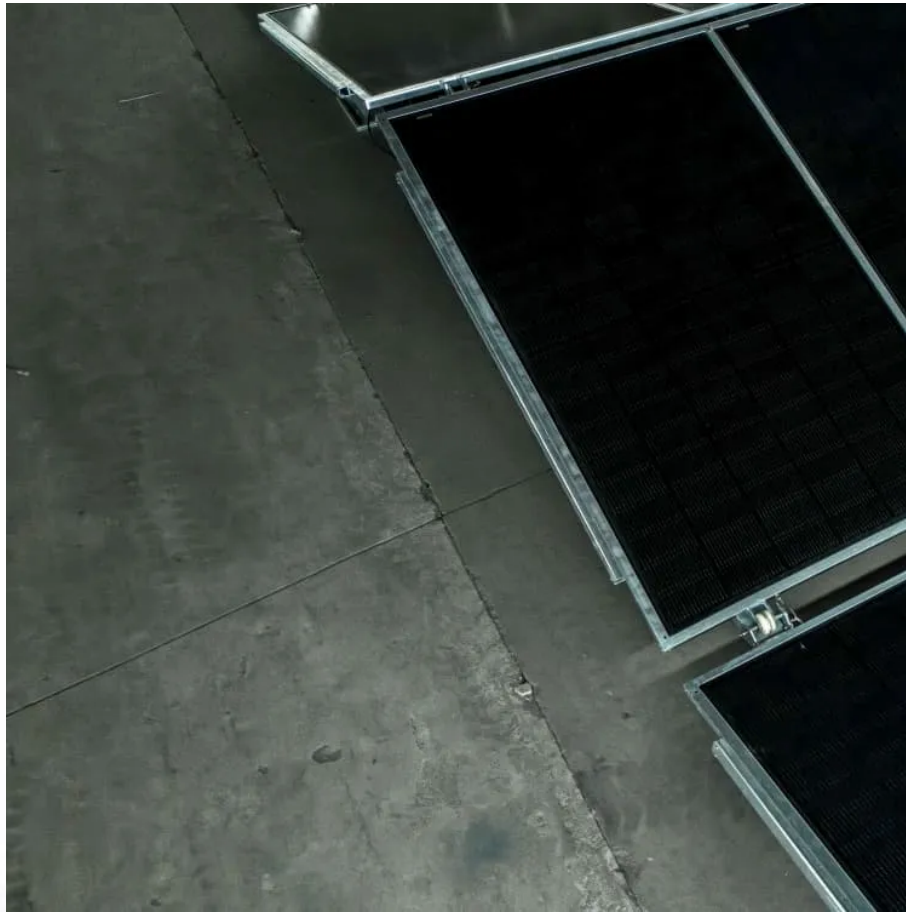


PDEOZE PowerContainer

Wind power complementary system power generation part



Overview

Wind-solar complementary power system is mainly composed of wind turbine, solar photovoltaic cell set, controller, battery, inverter, AC-DC load and other parts.

Wind-solar complementary power system is mainly composed of wind turbine, solar photovoltaic cell set, controller, battery, inverter, AC-DC load and other parts.

Wind-solar complementary power system, is a set of power generation application system, the system is using solar cell square, wind turbine (converting AC power into DC power) to store the emitted electricity into the battery bank, when the user needs electricity, the inverter will transform the DC.

The utility model provides a wind-solar complementary power generation system. The system comprises two fixed shafts which are vertically fixed on a work platform. A wind power generator is fixed at the top end of one fixed shaft, and an intelligent convergence box is fixed in the middle section of.

Comprehensive utilization of wind and solar resources and the development of wind-solar complementary power generation technology has become a research and development trend in the field of new energy. The wind and solar hybrid power generation system is a power generation system that combines wind.

Wind-solar complementary power generation technology is a set of power generation application system. The system uses solar cell array and wind generator (converts alternating current into direct current) to store the electric energy emitted into the battery bank. When the user needs electricity.

The wind-solar complementary power generation system combines wind turbines and solar PV arrays as two types of power generation devices. It is mainly divided into off-grid and grid-connected types. Off-grid systems utilize solar PV arrays and wind turbines to store generated electricity in battery.

The wind-solar complementary system is an efficient renewable energy utilization solution. It combines wind power generation and solar photovoltaic power generation technologies, making full use of the complementary characteristics of wind energy and solar energy in terms of time and season to.

Wind power complementary system power generation part

In this context, the complementary effects between different intermittent resources have garnered growing attention in the literature since such properties offer a collective ...

The wind-solar complementary power generation system combines wind turbines and solar PV arrays as two types of power generation devices. It is mainly divided into off-grid and grid-connected ...

Based on the law of energy conservation, the energetic matching algorithm was proposed which forms the foundation of optimal configuration of system. Finally, the intelligent control and on ...

The wind-solar complementary power generation system consists of solar photovoltaic panels, small wind turbines, system controllers, storage batteries and inverters.

IntroductionOff-Grid Wind-Solar Complementarypower SystemApplication ScenarioWind-Solar Complementary Grid-Connected Power SystemStructure Wind-solar complementary power system is mainly composed of wind turbine, solar photovoltaic cell set, controller, battery, inverter, AC-DC load and other parts. The system is a composite renewable energy power generation system integrating wind, solar and battery technologies and system intelligent control technology. Small wind-solar po See more on bolandnewenergy

Based on the law of energy conservation, the energetic matching algorithm was proposed which forms the foundation of optimal configuration of system. Finally, the intelligent control and on ...

With the introduction of 'dual carbon' targets, the use and demand for renewable energy sources such as wind power and photovoltaics is becoming more and more u

With the introduction of 'dual carbon' targets, the use and demand for renewable energy sources such as wind power and photovoltaics is becoming more and more u

The wind-solar complementary power generation system combines wind turbines and solar PV arrays as two types of power generation devices. It is mainly divided into off-grid ...

The utility model provides a wind-solar complementary power generation system. The system comprises two fixed shafts which are vertically fixed on a work platform.

The wind-solar complementary power generation system consists of solar photovoltaic panels, small wind turbines, system controllers, storage batteries and inverters.

This paper proposes constructing a multi-energy complementary power generation system integrating hydropower, wind, and solar energy. Considering capacity configuration ...

This paper proposes constructing a multi-energy complementary power generation system integrating hydropower, wind, and solar energy. Considering capacity configuration ...

The wind and solar hybrid power generation system is a power generation system that combines wind power and solar photovoltaic power generation, which is mainly composed of wind ...

It converts the electrical energy output from wind power generation system and photovoltaic power generation system into chemical energy and stores it for use when the ...

It combines wind power generation and solar photovoltaic power generation technologies, making full use of the complementary characteristics of wind energy and solar energy in terms of time ...

Contact Us

For catalog requests, pricing, or partnerships, please visit:
<https://www.pdeozepv.pl>