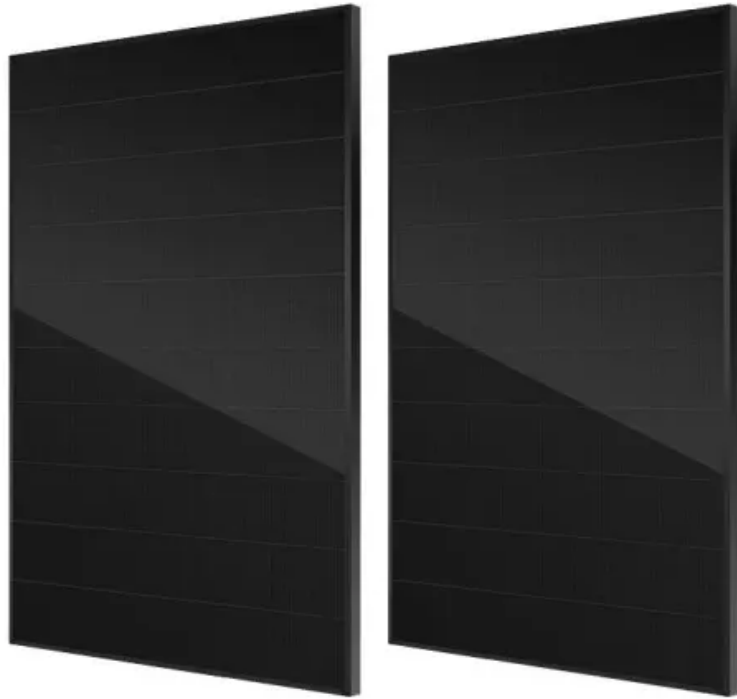


PDEOZE PowerContainer

What unit does the new energy site belong to



Overview

Georgia Power announced this week that the 1,114-megawatt (MW) Unit 4 nuclear power reactor at Plant Vogtle near Waynesboro, Georgia, entered into commercial operation after connecting to the power grid in March 2024.

Georgia Power announced this week that the 1,114-megawatt (MW) Unit 4 nuclear power reactor at Plant Vogtle near Waynesboro, Georgia, entered into commercial operation after connecting to the power grid in March 2024.

Nine Mile Point Nuclear Station is a nuclear power plant with two nuclear reactors located in the town of Scriba, approximately five miles northeast of Oswego, New York, on the shore of Lake Ontario. The 900-acre (360 ha) site is also occupied by the James A. FitzPatrick Nuclear Power Plant. In.

Nine Mile Point Clean Energy Center's two nuclear reactors in Oswego, New York, can produce up to 1,907 megawatts (MW) of clean, carbon-free electricity. Constellation owns Unit 1 and 82 percent of Unit 2, producing enough energy to power the equivalent of more than 1.2 million homes. Long Island.

The cost of home battery storage has plummeted from over \$1,000 per kilowatt-hour (kWh) a decade ago to around \$200-400/kWh today, making residential energy storage increasingly accessible to homeowners. Stacked energy storage systems utilize modular design and are divided into two specifications:.

What unit does the energy storage power station belong to?

The energy storage power station primarily belongs to the realm of energy systems, specifically categorized under renewable energy technologies, electricity management, and integrated power solutions. These facilities primarily serve the.

New York's 3.4 GW nuclear capacity provides 1/5 of of New York's electricity, and 42% of carbon-free power. Three nuclear power plants — Ginna, Nine Mile Point, and FitzPatrick — are located on the south shore of Lake Ontario and

are owned and operated by Constellation. At their peak, New York's.

Georgia Power announced this week that the 1,114-megawatt (MW) Unit 4 nuclear power reactor at Plant Vogtle near Waynesboro, Georgia, entered into commercial operation after connecting to the power grid in March 2024. The commercial start of Unit 4 completes the 11-year expansion project at Plant. How many MW is a unit 4 reactor?

Georgia Power announced this week that the 1,114-megawatt (MW) Unit 4 nuclear power reactor at Plant Vogtle near Waynesboro, Georgia, entered into commercial operation after connecting to the power grid in March 2024. The commercial start of Unit 4 completes the 11-year expansion project at Plant Vogtle.

Where is PSEG Nuclear Power Plant located?

The entire PSEG nuclear complex as seen from the Delaware Bay. The Salem Nuclear Power Plant is a two-unit pressurized water reactor nuclear power plant located in Lower Alloways Creek Township, in Salem County, New Jersey, United States. It is owned by PSEG Nuclear LLC of the Public Service Enterprise Group and Constellation Energy.

Where is New York's second largest nuclear power plant?

The James A. FitzPatrick Nuclear Power Plant is home to New York's second-largest operating reactor: An 854 MW boiling water reactor that generated ~7,400 gigawatt-hours of electricity in 2021. Like the Nine Mile Point plant next door, it is located in the Town of Scriba.

Is Constellation Energy a BWR?

Constellation Energy is the sole operator of both Units 1 and 2. Both units are boiling water reactors (BWRs). Both units are General Electric boiling water reactors (BWR). Unit 1, a BWR-2 (Generation 2), went online in 1969 and has a rated capacity of 644 megawatts (864,000 hp).

How much does Georgia Power's new nuclear power plant cost?

Construction at the two new reactor sites began in 2009. Originally expected to cost \$14 billion and begin commercial operation in 2016 (Vogtle 3) and in 2017 (Vogtle 4), the project ran into significant construction delays and cost overruns. Georgia Power now estimates the total cost of the project to be more than \$30 billion.

Does New York support nuclear energy?

“We appreciate the governor's leadership and New York's ongoing support for nuclear energy, which produces more than 20% of the state's energy, supporting millions of households and businesses and employing thousands of hardworking women and men in family-sustaining jobs,” said Joe Dominguez, Constellation's president and CEO.

What unit does the new energy site belong to

Georgia Power announced this week that the 1,114-megawatt (MW) Unit 4 nuclear power reactor at Plant Vogtle near Waynesboro, Georgia, entered into commercial operation after connecting to the power grid in March 2024. The commercial start of Unit 4 completes the 11-year expansion project at Plant Vogtle.

The entire PSEG nuclear complex as seen from the Delaware Bay. The Salem Nuclear Power Plant is a two-unit pressurized water reactor nuclear power plant located in Lower Alloways Creek Township, in Salem County, New Jersey, United States. It is owned by PSEG Nuclear LLC of the Public Service Enterprise Group and Constellation Energy.

The James A. FitzPatrick Nuclear Power Plant is home to New York's second-largest operating reactor: An 854 MW boiling water reactor that generated ~7,400 gigawatt-hours of electricity in 2021. Like the Nine Mile Point plant next door, it is located in the Town of Scriba.

Constellation Energy is the sole operator of both Units 1 and 2. Both units are boiling water reactors (BWRs). Both units are General Electric boiling water reactors (BWR). Unit 1, a BWR-2 (Generation 2), went online in 1969 and has a rated capacity of 644 megawatts (864,000 hp).

Construction at the two new reactor sites began in 2009. Originally expected to cost \$14 billion and begin commercial operation in 2016 (Vogtle 3) and in 2017 (Vogtle 4), the project ran into significant construction delays and cost overruns. Georgia Power now estimates the total cost of the project to be more than \$30 billion.

"We appreciate the governor's leadership and New York's ongoing support for nuclear energy, which produces more than 20% of the state's energy, supporting millions of

households and businesses and employing thousands of hardworking women and men in family-sustaining jobs," said Joe Dominguez, Constellation's president and CEO.

Duke Energy's nuclear plant in Brunswick County is turning 50 years old. Here are a few things to know about the site.

Nine Mile Point Clean Energy Center's two nuclear reactors in Oswego, New York, can produce up to 1,907 megawatts (MW) of clean, carbon-free electricity. Constellation owns Unit 1 and 82 percent of Unit 2, producing ...

The energy storage power station primarily belongs to the realm of energy systems, specifically categorized under renewable energy technologies, electricity management, and ...

In further support of new nuclear development, New York has announced that it will help lead a multi-state Consortium on Nuclear Energy focused on driving down costs and risk ...

Exelon separated its generating assets back into Constellation Energy in 2022. Constellation owns Unit 1 and holds 82% of Unit 2 while Long Island Power Authority holds 18%. ...

Georgia Power's Plant Vogtle, comprised of four units in Waynesboro, Georgia, is delivering carbon-free nuclear energy to more than 2 million homes and businesses.

The Salem Nuclear Power Plant is a two-unit pressurized water reactor nuclear power plant located in Lower Alloways Creek Township, in Salem County, New Jersey, United States. It is owned by PSEG Nuclear LLC of ...

Nine Mile Point Clean Energy Center's two nuclear reactors in Oswego, New York, can produce up to 1,907 megawatts (MW) of clean, carbon-free electricity. Constellation

owns Unit 1 and 82 ...

Georgia Power announced this week that the 1,114-megawatt (MW) Unit 4 nuclear power reactor at Plant Vogtle near Waynesboro, Georgia, entered into commercial operation after connecting to the power ...

What unit does the new energy site belong to The Seabrook Nuclear Power Plant, more commonly known as Seabrook Station, is a located in,, approximately 40 miles (64 km) north ...

The Salem Nuclear Power Plant is a two-unit pressurized water reactor nuclear power plant located in Lower Alloways Creek Township, in Salem County, New Jersey, United States. It is ...

Georgia Power announced this week that the 1,114-megawatt (MW) Unit 4 nuclear power reactor at Plant Vogtle near Waynesboro, Georgia, entered into commercial operation ...

New York's 3.4 GW nuclear capacity provides 1/5 of of New York's electricity, and 42% of carbon-free power. Three nuclear power plants -- Ginna, Nine Mile Point, and FitzPatrick -- are ...

Duke Energy's nuclear plant in Brunswick County is turning 50 years old. Here are a few things to know about the site.

Georgia Power's Plant Vogtle, comprised of four units in Waynesboro, Georgia, is delivering carbon-free nuclear energy to more than 2 million homes and businesses.

What unit does the new energy site belong to The Seabrook Nuclear Power Plant, more commonly known as Seabrook Station, is a located in,, approximately 40 miles (64 km) north ...

Contact Us

For catalog requests, pricing, or partnerships, please visit:
<https://www.pdeozepv.pl>