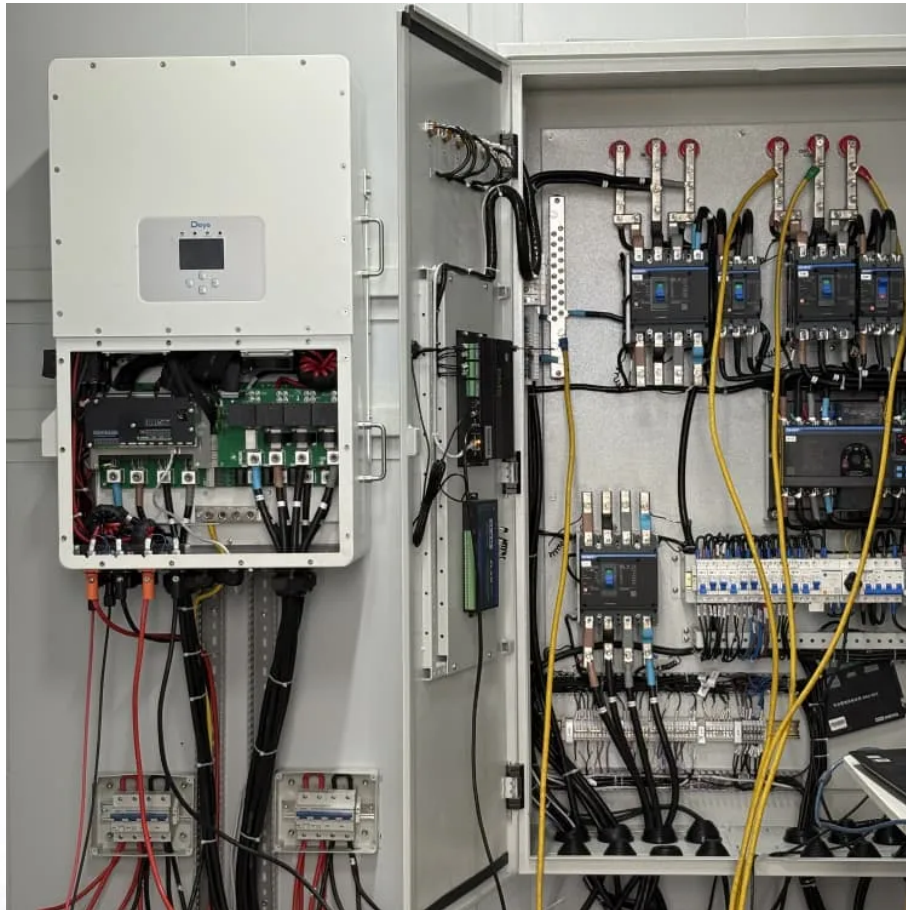


PDEOZE PowerContainer

What kind of battery does a communication base station use



Overview

Which battery is best for telecom base station backup power?

Among various battery technologies, Lithium Iron Phosphate (LiFePO₄) batteries stand out as the ideal choice for telecom base station backup power due to their high safety, long lifespan, and excellent thermal stability.

What makes a telecom battery pack compatible with a base station?

Compatibility and Installation Voltage Compatibility: 48V is the standard voltage for telecom base stations, so the battery pack's output voltage must align with base station equipment requirements. Modular Design: A modular structure simplifies installation, maintenance, and scalability.

What type of battery does a telecom system need?

Beyond the commonly discussed battery types, telecom systems occasionally leverage other varieties to meet specific needs. One such option is the flow battery. These batteries excel in energy storage, making them ideal for larger installations that require consistent power over extended periods.

Are lithium-ion batteries a good choice for a telecom system?

Lithium-ion batteries have rapidly gained popularity in telecom systems. Their efficiency is unmatched, providing higher energy density compared to traditional options. This means they can store more power in a smaller footprint.

Why do telecom systems need batteries?

Telecom systems play a crucial role in keeping our world connected. From mobile phones to internet service providers, these networks need reliable power sources to function smoothly. That's where batteries come into play. They ensure that communication lines remain open, even during outages or emergencies. But not all batteries are created equal.

What is a cellular communication base station?

A cellular communication base station is an apparatus for transmitting and receiving electromagnetic waves in the radiofrequency (RF) range and it is the site through which cellular devices communicate with communication systems deployed throughout the world.

What kind of battery does a communication base station use

Among various battery technologies, Lithium Iron Phosphate (LiFePO₄) batteries stand out as the ideal choice for telecom base station backup power due to their high safety, long lifespan, and excellent thermal stability.

Compatibility and Installation Voltage Compatibility: 48V is the standard voltage for telecom base stations, so the battery pack's output voltage must align with base station equipment requirements. **Modular Design:** A modular structure simplifies installation, maintenance, and scalability.

Beyond the commonly discussed battery types, telecom systems occasionally leverage other varieties to meet specific needs. One such option is the flow battery. These batteries excel in energy storage, making them ideal for larger installations that require consistent power over extended periods.

Lithium-ion batteries have rapidly gained popularity in telecom systems. Their efficiency is unmatched, providing higher energy density compared to traditional options. This means they can store more power in a smaller footprint.

Telecom systems play a crucial role in keeping our world connected. From mobile phones to internet service providers, these networks need reliable power sources to function smoothly. That's where batteries come into play. They ensure that communication lines remain open, even during outages or emergencies. But not all batteries are created equal.

A cellular communication base station is an apparatus for transmitting and receiving electromagnetic waves in the radiofrequency (RF) range and it is the site through which cellular devices communicate with communication systems deployed throughout the

world.

Definition Telecom base station battery is a kind of energy storage equipment dedicatedly designed to provide backup power for telecom base stations, applied to supply continuous and stable power to base station equipment ...

Jul 22, 2024 · Telecom systems play a crucial role in keeping our world connected. From mobile phones to internet service providers, these networks need reliable power sources to function smoothly. That's where batteries ...

Aug 8, 2025 · Telecommunication battery (telecom battery), also known as telecom backup battery or telecom battery bank, primarily refer to the backup power systems used in base stations and are a core component of these ...

Telecom batteries for base stations are backup power systems that ensure uninterrupted connectivity during grid outages. Typically using valve-regulated lead-acid (VRLA) or lithium ...

Jun 5, 2025 · Discover the 48V 100Ah LiFePO4 battery pack for telecom base stations: safe, long-lasting, and eco-friendly. Optimize reliability with our design guide.

Feb 13, 2024 · What Are Lithium Batteries For Telecom Towers? Lithium batteries for telecom towers are advanced energy storage devices that provide reliable backup power for telecom infrastructure. They ensure ...

Several types of batteries can be used as backup power sources for communication base stations. The choice of battery depends on factors such as the power requirements of the base ...

Feb 10, 2025 · Telecom batteries refer to batteries that are used as a backup power source for wireless communications base stations.

4 days ago · Uninterrupted Operations: Communication should never be hindered by power disruptions. The 48V LiFePO4 battery ensures that base stations stay operational even in the face of outages, safeguarding critical ...

Oct 31, 2025 · Explore the Battery for Communication Base Stations Market forecasted to expand from USD 1.2 billion in 2024 to USD 2.

Definition Telecom base station battery is a kind of energy storage equipment dedicatedly designed to provide backup power for telecom base stations, applied to supply continuous and ...

4 days ago · Uninterrupted Operations: Communication should never be hindered by power disruptions. The 48V LiFePO4 battery ensures that base stations stay operational even in the ...

Jul 22, 2024 · Telecom systems play a crucial role in keeping our world connected. From mobile phones to internet service providers, these networks need reliable power sources to function ...

Aug 8, 2025 · Telecommunication battery (telecom battery), also known as telecom backup battery or telecom battery bank, primarily refer to the backup power systems used in base ...

Jun 5, 2025 · Discover the 48V 100Ah LiFePO4 battery pack for telecom base stations: safe, long-lasting, and eco-friendly. Optimize reliability with our design guide.

Feb 10, 2025 · Telecom batteries refer to batteries that are used as a backup power source for wireless communications base stations.

Feb 13, 2024 · What Are Lithium Batteries For Telecom Towers? Lithium batteries for

telecom towers are advanced energy storage devices that provide reliable backup power for telecom ...

Contact Us

For catalog requests, pricing, or partnerships, please visit:
<https://www.pdeozepv.pl>