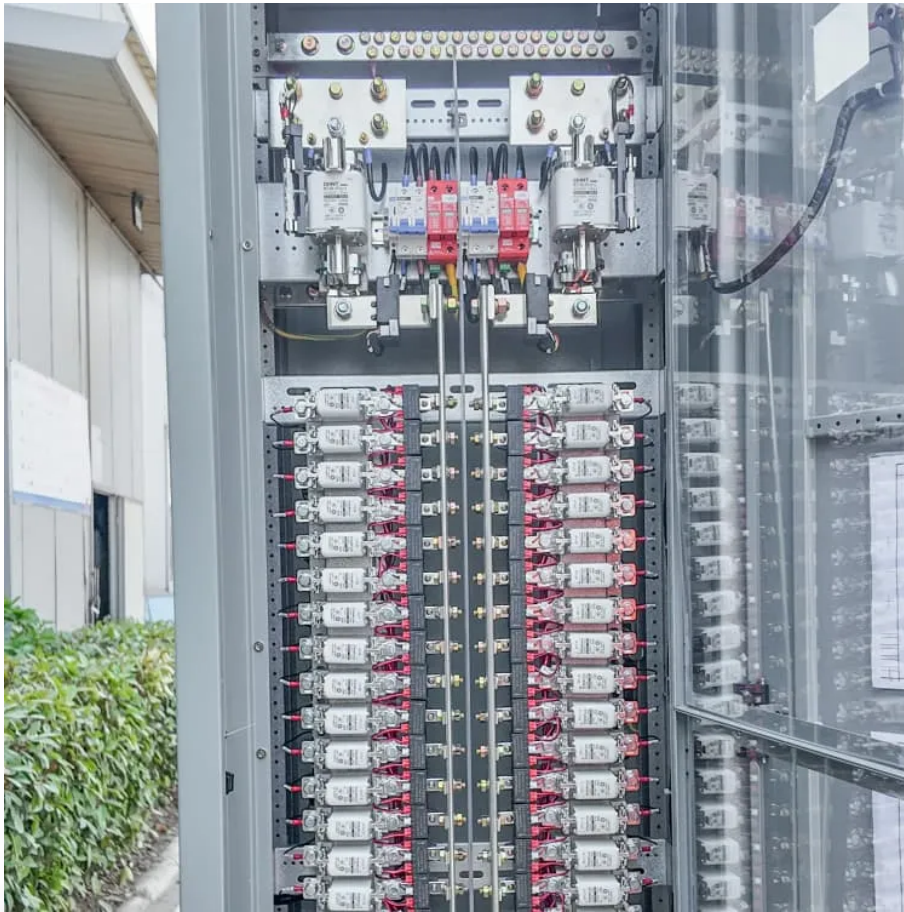


## PDEOZE PowerContainer

# What is the size of the 590 solar panel



## Overview

---

Modern 590W modules typically measure around 2,200mm x 1,100mm x 35mm, packing more punch per square meter than older models. To put that in perspective, that's slightly taller than a regulation NBA basketball hoop (3.05m) turned sideways!.

Modern 590W modules typically measure around 2,200mm x 1,100mm x 35mm, packing more punch per square meter than older models. To put that in perspective, that's slightly taller than a regulation NBA basketball hoop (3.05m) turned sideways!.

There are 3 standardized sizes of solar panels, namely: 60-cell solar panels size. The dimensions of 60-cell solar panels are as follows: 66 inches long, and 39 inches wide. That's basically a 66x39 solar panel. But what is the wattage?

That is unfortunately not listed at all. 72-cell solar panel.

What is the best direction for a solar panel to face?

Axitec AC-590TGB/144TS is a PV module fit for both residential and commercial applications. Axitec engineers made the AXIworldbiperfect GXXL series durable and efficient while minimizing the amount of useful space required for their operation.

The IBEX-156MHC-EIGER-570-590 BLACK, manufactured by Swiss Solar, is [. ]  
Introducing the IBEX-156MHC-EIGER-570-590 by Swiss Solar, a pinnacle [. ]  
The ZP5MxxxH60 (H) Multi Busbar Monocrystalline Half Cell PV Module of [. ]  
The 6BB Big Cell Modules 550-600W are high-performance solar panels.

Captures sunlight from both sides, generating 30% more power than monofacial panels for maximum efficiency. The Renogy 590W bifacial solar panel delivers higher efficiency and up to 7% more output, maximizing energy generation without increasing panel size. Easily install Renogy solar panels on.

The JA Solar JAM72D40-590/LB-ITS is a 590W n-type Double Glass Bifacial

Solar Panel with a silver frame. Part of the Deep Blue 4.0 Series, the panel offers high power & efficiency, lower degradation and better low-light performance. Panels in this range are protected by a 12 year product warranty.

When you see "590W photovoltaic panel," think of it as a solar workhorse that can generate 590 watts under ideal conditions. But here's the kicker - these panels aren't your grandpa's solar technology. Modern 590W modules typically measure around 2,200mm x 1,100mm x 35mm, packing more punch per.

## What is the size of the 590 solar panel

---

More Energy in the Same Space The SunGoldPower 590W bifacial panel boosts efficiency, delivering up to 796W more output without changing the panel size.

The Renogy Bifacial 590W Monocrystalline Solar Panel is more compact than ever, perfect for both beginners and experienced users. Unlike traditional panels, its ...

Captures sunlight from both sides, generating 30% more power than monofacial panels for maximum efficiency. The Renogy 590W bifacial solar panel delivers higher efficiency and up to 7% more output, maximizing ...

This advanced solar module features 144 cells and 16 busbars, ensuring superior energy production and reliability. It consists of a junction box that ...

This Axitec panel provides 590 W of power at 22.84% efficiency. High energy production levels are achieved through the usage of the latest advances in the solar industry, including N-Type ...

Captures sunlight from both sides, generating 30% more power than monofacial panels for maximum efficiency. The Renogy 590W bifacial solar panel delivers higher efficiency and up to ...

The Renogy 590W bifacial solar panel delivers higher efficiency and up to 7% more output, maximizing energy generation without increasing panel size. Easily install Renogy solar panels ...

The goal here is to get to the average solar panel size by wattage. You can find typical

dimensions of 100W, 150W, 170W, 200W, 200W, 220W, 300W, 350W, 400W, and 500W solar panels summarized in the chart below.

The JA Solar JAM72D40-590/LB-ITS is a 590W n-type Double Glass Bifacial Solar Panel with a silver frame. Part of the Deep Blue 4.0 Series, the panel offers high power & efficiency, lower ...

590 Watt Solar panels' range of prices, dimensions, sizes, voltage output, specifications datasheets Ranges of information Voltage: 33.96V ~ 50.98V Amp: 11.57A ~ 17.37A

The goal here is to get to the average solar panel size by wattage. You can find typical dimensions of 100W, 150W, 170W, 200W, 200W, 220W, 300W, 350W, 400W, and 500W solar ...

But here's the kicker - these panels aren't your grandpa's solar technology. Modern 590W modules typically measure around 2,200mm x 1,100mm x 35mm, packing more punch per ...

590 Watt Solar panels' range of prices, dimensions, sizes, voltage output, specifications datasheets Ranges of information Voltage: 33.96V ~ 50.98V Amp: 11.57A ~ 17.37A

But here's the kicker - these panels aren't your grandpa's solar technology. Modern 590W modules typically measure around 2,200mm x 1,100mm x 35mm, packing more punch per ...

This advanced solar module features 144 cells and 16 busbars, ensuring superior energy production and reliability. It consists of a junction box that is MC4 IP68-rated, ensuring better ...

The Renogy Bifacial 590W Monocrystalline Solar Panel is more compact than ever, perfect for both beginners and experienced users. Unlike traditional panels, its

transparent backsheet ...

The JA Solar JAM72D40-590/LB-ITS is a 590W n-type Double Glass Bifacial Solar Panel with a silver frame. Part of the Deep Blue 4.0 Series, the ...

## Contact Us

---

For catalog requests, pricing, or partnerships, please visit:  
<https://www.pdeozepv.pl>