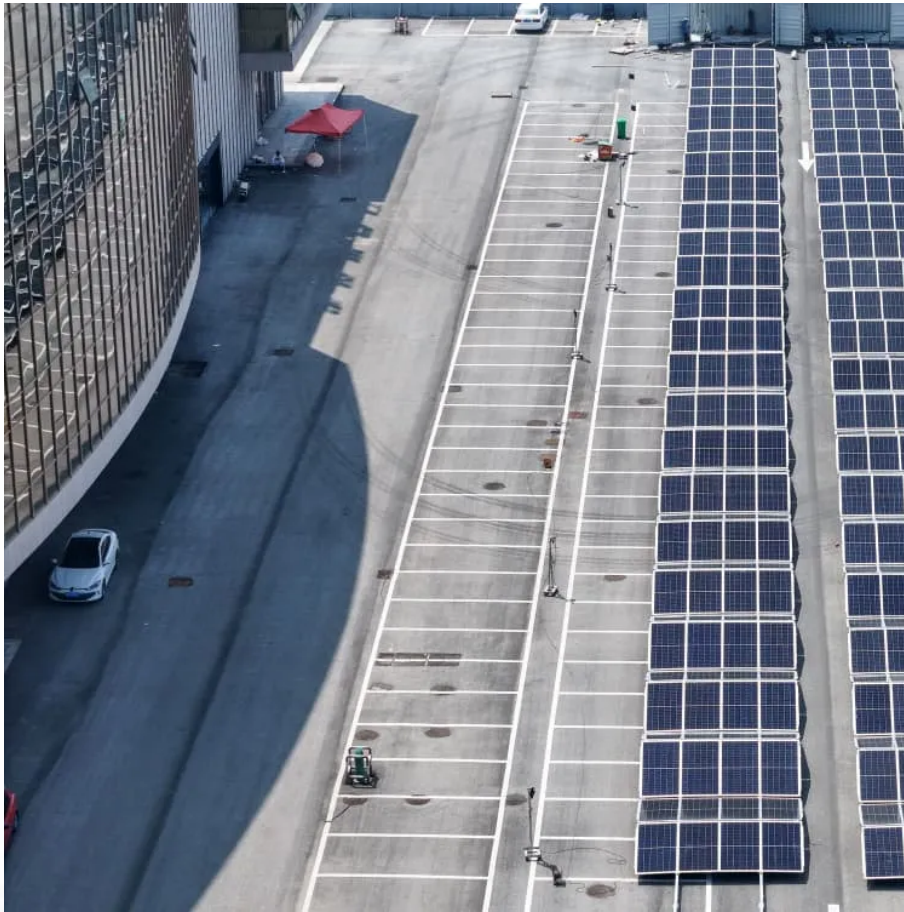


PDEOZE PowerContainer

What is the size of the 305 solar panel



Overview

A 305 watt solar panel is a photovoltaic module capable of producing 305 watts of power under Standard Test Conditions (STC). These panels typically feature 60-cell monocrystalline or polycrystalline configurations and measure approximately 65" x 39" in size.

A 305 watt solar panel is a photovoltaic module capable of producing 305 watts of power under Standard Test Conditions (STC). These panels typically feature 60-cell monocrystalline or polycrystalline configurations and measure approximately 65" x 39" in size.

The Mission Solar 305W PERC 60 5-busbar solar panel is a 60 cell solar panel featuring a sleek, all-black design coupled with 5 busbar technology. The efficiency and reliability make it ideal for utility grid-tied installations including commercial and residential rooftop solar panel systems.

305 watt solar panels represent a specific segment of the solar market that has undergone significant changes in recent years. These mid-range panels, which were once considered high-efficiency options, now occupy a unique position as the industry has largely transitioned to higher wattage.

LG Solar offers precision-manufactured and market-leading solar panels for businesses and homeowners who demand high performance, reliability and consistently strong energy yield -- all from a brand they can trust. By choosing LG's long lasting, energy-efficient and sustainable solar panels.

The SunPower 305 Solar Panel provides today's highest efficiency and performance. Utilizing 96 next generation SunPower all-back contact solar cells, the SunPower 305 delivers an unprecedented total panel conversion efficiency of 18.7%. The 305 panel's reduced voltage-temperature coefficient and.

2, The dimension of the module is only 1.956m*0.992m, avoiding too big size and weight, easy to be carried by one person for installation anywhere on the rooftop and ground. 3, If your region has more sunshine than the cloudy and rainy days, this module is the best to save your money.

What are the dimensions of the panel?

How long is the warranty on the panel?

Which panels do you recommend for RV, marine?

Can this panel be used with a 12v system?

Can I pick up this panel from your fulfillment center to save on shipping?

How do I connect these panels?

How many panels do I need?

What is a SunPower 305 solar panel?

Utilizing 96 next generation SunPower all-back contact solar cells, the SunPower 305 delivers an unprecedented total panel conversion efficiency of 18.7%. The 305 panel's reduced voltage-temperature coefficient and exceptional low-light performance attributes provide outstanding energy delivery per peak power watt.

What is a Trina 305w solar panel?

Trina, 305W PV Module, MC-4 Connector, PV Wire, 35mm Black Frame with Black Backsheet, BoB, 60 Cell Mono, 20A Fuse, 1000VDC, 3.2mm glass, 278.4W PTC, TSM-305-DD05A.05 (II) TRINA 305W TSM-305-DD05A.05 solar panel 92W/m² power density you can maximize limited space with top-end efficiency.

How much power does a Trina 305w tsm-305-dd05a solar panel have?

TRINA 305W TSM-305-DD05A.05 solar panel 92W/m² power density you can maximize limited space with top-end efficiency. Look into detailed descriptions, ratings, reviews, pictures, and more at A1 SolarStore.

What are the different sizes of solar panels?

There are 3 standardized sizes of solar panels, namely: 60-cell solar panels size. The dimensions of 60-cell solar panels are as follows: 66 inches long, and 39 inches wide. That's basically a 66×39 solar panel. But what is the wattage?

That is unfortunately not listed at all. 72-cell solar panel size.

Why should you buy a 305 panel?

The 305 panel's reduced voltage-temperature coefficient and exceptional low-light performance attributes provide outstanding energy delivery per peak power watt. Current/voltage characteristics with dependence on irradiance and module temperature. **CAUTION: READ SAFETY AND INSTALLATION INSTRUCTIONS BEFORE USING THE PRODUCT.**

How big is a 300 watt solar panel?

A typical 300-watt solar panel is 65.8 inches long and 36.1 inches wide. It takes up 16.5 sq ft of area. If you have a 1000 sq ft roof, and you can use 75% of that roof area for solar panels, you can theoretically put 45 300-watt solar panels on a 1000 sq ft roof. A typical 400-watt solar panel is 79.1 inches long and 39.1 inches wide.

What is the size of the 305 solar panel

Utilizing 96 next generation SunPower all-back contact solar cells, the SunPower 305 delivers an unprecedented total panel conversion efficiency of 18.7%. The 305 panel's reduced voltage-temperature coefficient and exceptional low-light performance attributes provide outstanding energy delivery per peak power watt.

Trina, 305W PV Module, MC-4 Connector, PV Wire, 35mm Black Frame with Black Backsheet, BoB, 60 Cell Mono, 20A Fuse, 1000VDC, 3.2mm glass, 278.4W PTC, TSM-305-DD05A.05 (II) TRINA 305W TSM-305-DD05A.05 solar panel 92W/m² power density you can maximize limited space with top-end efficiency.

TRINA 305W TSM-305-DD05A.05 solar panel 92W/m² power density you can maximize limited space with top-end efficiency. Look into detailed descriptions, ratings, reviews, pictures, and more at [A1 SolarStore](#)

There are 3 standardized sizes of solar panels, namely: 60-cell solar panels size. The dimensions of 60-cell solar panels are as follows: 66 inches long, and 39 inches wide. That's basically a 66×39 solar panel. But what is the wattage? That is unfortunately not listed at all. 72-cell solar panel size.

The 305 panel's reduced voltage-temperature coefficient and exceptional low-light performance attributes provide outstanding energy delivery per peak power watt. Current/voltage characteristics with dependence on irradiance and module temperature. CAUTION: READ SAFETY AND INSTALLATION INSTRUCTIONS BEFORE USING THE PRODUCT.

A typical 300-watt solar panel is 65.8 inches long and 36.1 inches wide. It takes up 16.5 sq ft of area. If you have a 1000 sq ft roof, and you can use 75% of that roof area for

solar panels, you can theoretically put 45 300-watt solar panels on a 1000 sq ft roof. A typical 400-watt solar panel is 79.1 inches long and 39.1 inches wide.

Discover the exact dimensions of 300W, 400W, and 1kW solar panels. Learn their size, weight, and space requirements before you buy. Plus, calculate solar panel costs.

The size of solar panels with the same cell count varies slightly, depending on the brand and model. Still, most 60-cell solar panels have a size of 39" X 66" and most 72-cell ...

The JC305S-24/Bbw solar panels have a rated output of 305 Wp and an impressive efficiency of 18.75 %, making them an excellent choice for homeowners looking to harness the power of the ...

Solar panels differ by power output, voltage, connection type, size, efficiency, and weight. Some solar panels might be sold together with microinverters as a set.

All you need to know about the HSL72P6-PC-1-305 solar panel including rating, cost, efficiency, and warranty terms.

All you need to know about the CSUN305-72P solar panel including rating, cost, efficiency, and warranty terms.

In addition, we'll discuss the factors that dictate solar panel size, the standard size of a solar cell, and the thickness of solar panels.

The goal here is to get to the average solar panel size by wattage. You can find typical dimensions of 100W, 150W, 170W, 200W, 200W, 220W, 300W, 350W, 400W, and 500W solar panels summarized in the chart below.

The best solar providers will help you pick the right panels that support your energy

needs and work with your roof, but homeowners should understand how a panel's size and weight impact installation. ...

Can your roof support a solar panel system? Solar panels generate clean energy and significant savings, but they aren't a one-size-fits-all solution. The size and weight of solar panels vary depending on the ...

Region: China Features: Half Cell (half cut) / Low Light Irradiance / Polycrystalline / Severe Weather Resistant Panel Dimension: 1684x1002x35 mm Inventory: Production on demand

The SunPower 305 Solar Panel provides today's highest efficiency and performance. Utilizing 96 next generation SunPower all-back contact solar cells, the SunPower 305 delivers an ...

Polycrystalline solar panels 305W, 310W, 320W, 330W, 340W, and 350W. Dimension: 1956mm*992mm*35mm; Weight: 20.5Kgs

TRINA 305W TSM-305-DD05A.05 solar panel 92W/m² power density you can maximize limited space with top-end efficiency. Look into detailed descriptions, ratings, reviews, pictures, and more at A1 ...

This 305 watt solar panel has been discontinued. View specifications, manuals, and find current replacement models at Solar Electric Supply.

Our 2025 UK guide to the best flexible solar panels: stealth builds, pop-tops and drill-free installs explained, plus efficiency, heat and top recommendations.

The Mission Solar 305W PERC 60 5-busbar solar panel is a 60 cell solar panel featuring a sleek, all-black design coupled with 5 busbar technology. The efficiency and reliability make it ideal for utility grid-tied installations ...

A 305 watt solar panel is a photovoltaic module capable of producing 305 watts of power under Standard Test Conditions (STC). These panels typically feature 60-cell monocrystalline or polycrystalline ...

We would like to show you a description here but the site won't allow us.

This 305W solar panel kit includes everything you need to wire a solar panel & charge controller as part of your off-grid electrical system.

The ALLMAX M Plus TSM-305 Deep Black has the same great reliability as the ALLMAX, and is compatible with all major balance of system components and most module-level power electronics. In a recent review of solar ...

An average solar panel system requires between 15 to 19 solar panels and takes up 260 to 340 square feet of space. Solar panel efficiency, output, a good warranty, and a trusted brand are ...

Changzhou Jidi Solar Co., Ltd. Solar Panel Series SI285-305P-72. Detailed profile including pictures, certification details and manufacturer PDF

Buy solar panels and complete solar panel kits for home or business. Solaris delivers quality solar energy products at wholesale prices.

Canadian Solar's new Quartech modules have raised the module efficiency to a new standard in the solar industry. It introduced innovative four busbar cell technology which demonstrated ...

This 305W solar panel kit includes everything you need to wire a solar panel & charge controller as part of your off-grid electrical system.

By choosing LG's long lasting, energy-efficient and sustainable solar panels, receive higher financial and environmental benefits for your business and other stakeholders. ...

The Trina Solar TSM-305-DD05A.05(II) Monocrystalline Solar Panel is an ideal solution for residential installations.

Low pricing on the latest 60-cell solar panel from S-Energy. Complete large and small solar systems. Expert advice from a trusted S-Energy Authorized Supplier. 305 W Module.

Image source: solarchoice The average solar panel is typically about 5.5 feet in length and 3.3 feet in width. This gives the panel an area of around 17.2 square feet. Monocrystalline panels like the 455w ...

Mission Solar 305-watt solar panel features class leading power output that makes it ideal for any installations including commercial and rooftop systems. Outstanding ...

MAX POWER CS6X-300 , 305 , 310P High quality and reliability in all Canadian Solar modules is ensured by 13 years' experience in module manufacturing, well-engineered module design, ...

One of the most important things you need to know before you are going to install solar panels is when it comes to the size of the solar panels, by choosing the best size of solar panels that suits your needs, ...

Contact Us

For catalog requests, pricing, or partnerships, please visit:
<https://www.pdeozepv.pl>