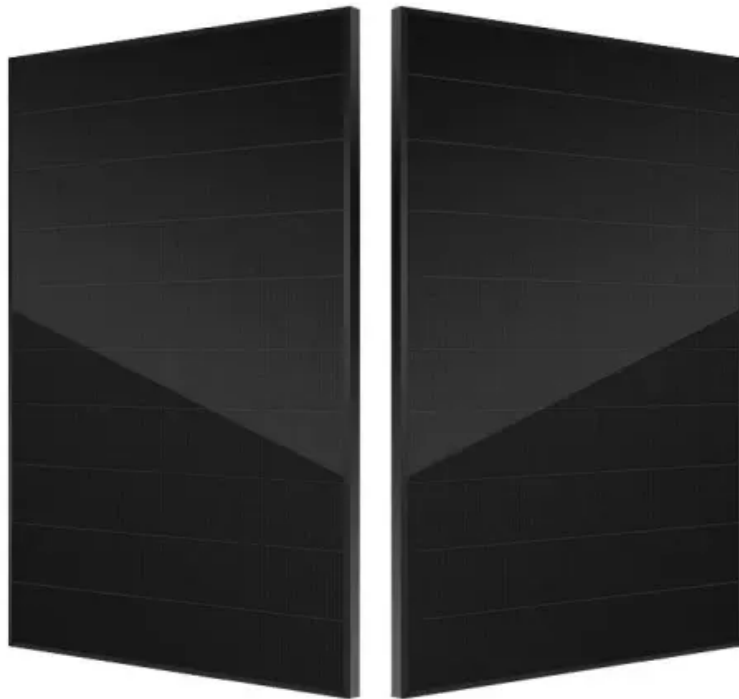


PDEOZE PowerContainer

What is the appropriate inverter current for home use



Overview

To determine the required amps for your inverter, you can use the formula: $\text{Watts} / \text{Volts} = \text{amps}$. This calculation helps you estimate the battery drain per hour for your inverter. How to choose the right power inverter for your home?

Choosing the right power inverter for your home involves understanding your power needs, selecting the right type and capacity, ensuring compatibility with a suitable battery, and paying attention to features and brand reliability. Inverter Store can also give a help for your selection.

What makes a good power inverter?

Good waveform quality prevents damage to appliances and ensures smooth operation. Choosing the right power inverter for your home involves understanding your power needs, selecting the right type and capacity, ensuring compatibility with a suitable battery, and paying attention to features and brand reliability.

What are the different types of inverters suitable for home use?

There are several types of inverters suitable for home use, each offering different features, efficiency levels, and applications. Choosing the right type depends on factors such as power needs, budget, and usage patterns. Below are the main types of inverters ideal for household applications: Pure Sine Wave Inverter.

How to choose the best inverter with a battery for home?

You should always pick a battery slightly bigger than what you calculate. So, a 160 Ah battery would be good for your needs. When looking for the best inverter with a battery for home, check that both the inverter and battery are compatible. Choosing the right battery type is equivalent to picking the best inverter for the home.

Why do you need a home inverter?

By providing a reliable backup power solution, inverters enhance home comfort, improve energy independence, and help protect sensitive electronic devices from voltage fluctuations. There are several types of inverters suitable for home use, each offering different features, efficiency levels, and applications.

What is an inverter used for?

An inverter is made for running basic things like fans, lights, a TV, and a computer. Big devices like AC, water heater, or washing machine need a lot of power and may damage the inverter if used. Q2. How to choose an inverter for a home if I have too many appliances?

What is the appropriate inverter current for home use

Choosing the right power inverter for your home involves understanding your power needs, selecting the right type and capacity, ensuring compatibility with a suitable battery, and paying attention to features and brand reliability. Inverter Store can also give a help for your selection.

Good waveform quality prevents damage to appliances and ensures smooth operation. Choosing the right power inverter for your home involves understanding your power needs, selecting the right type and capacity, ensuring compatibility with a suitable battery, and paying attention to features and brand reliability.

There are several types of inverters suitable for home use, each offering different features, efficiency levels, and applications. Choosing the right type depends on factors such as power needs, budget, and usage patterns. Below are the main types of inverters ideal for household applications: Pure Sine Wave Inverter.

You should always pick a battery slightly bigger than what you calculate. So, a 160 Ah battery would be good for your needs. When looking for the best inverter with a battery for home, check that both the inverter and battery are compatible. Choosing the right battery type is equivalent to picking the best inverter for the home.

By providing a reliable backup power solution, inverters enhance home comfort, improve energy independence, and help protect sensitive electronic devices from voltage fluctuations. There are several types of inverters suitable for home use, each offering different features, efficiency levels, and applications.

An inverter is made for running basic things like fans, lights, a TV, and a computer. Big devices like AC, water heater, or washing machine need a lot of power and may damage

the inverter if used. Q2. How to choose an inverter for a home if I have too many appliances?

Searching for the best power inverter for home? Wondering what size will perfectly meet your needs? This article helps you choose the right inverter for the house.

Jul 26, 2023 · A Comprehensive Guide to Selecting an Inverter for Home Use Introduction Inverters play a crucial role in converting direct current (DC) electricity from renewable energy ...

Jun 14, 2025 · Choosing the right inverter size comes down to knowing your power needs, matching battery capacity, and prioritizing safety features.

Jul 26, 2023 · A Comprehensive Guide to Selecting an Inverter for Home Use Introduction Inverters play a crucial role in converting direct current (DC) electricity from renewable energy sources or batteries into alternating ...

5 days ago · Discover how to choose the best power inverter for your home in 2025. Compare inverter types, brands, features & costs with our complete buying guide.

Jun 30, 2025 · Learn how to choose the best inverters for home use with our comprehensive guide. Compare types, calculate your power needs, and find the perfect inverter for reliable backup power.

Jun 27, 2024 · To determine the required amps for your inverter, you can use the formula: $\text{Watts} / \text{Volts} = \text{amps}$. This calculation helps you estimate the battery drain per hour for your inverter. It ...

Searching for the best power inverter for home? Wondering what size will perfectly meet your needs? This article helps you choose the right inverter for the house.

Jun 14, 2025 · Choosing the right inverter size comes down to knowing your power needs, matching battery capacity, and prioritizing safety features.

Find out how to choose the best inverters for home with tips on capacity, battery type, brand, and features to ensure reliable backup during power cuts.

Oct 31, 2024 · Understanding Inverters and Their Role in Your Home A home inverter is a device that converts direct current (DC) to alternating current (AC). It plays a vital role in a home ...

Aug 6, 2025 · Conclusion: Choosing the right power inverter for your home involves understanding your power needs, selecting the right type and capacity, ensuring compatibility ...

Jun 30, 2025 · Learn how to choose the best inverters for home use with our comprehensive guide. Compare types, calculate your power needs, and find the perfect inverter for reliable ...

Find out how to choose the best inverters for home with tips on capacity, battery type, brand, and features to ensure reliable backup during power cuts.

Oct 1, 2025 · Choosing the right inverter can save money, boost efficiency, and protect appliances. Discover expert tips for solar and home systems today.

Contact Us

For catalog requests, pricing, or partnerships, please visit:
<https://www.pdeozepv.pl>