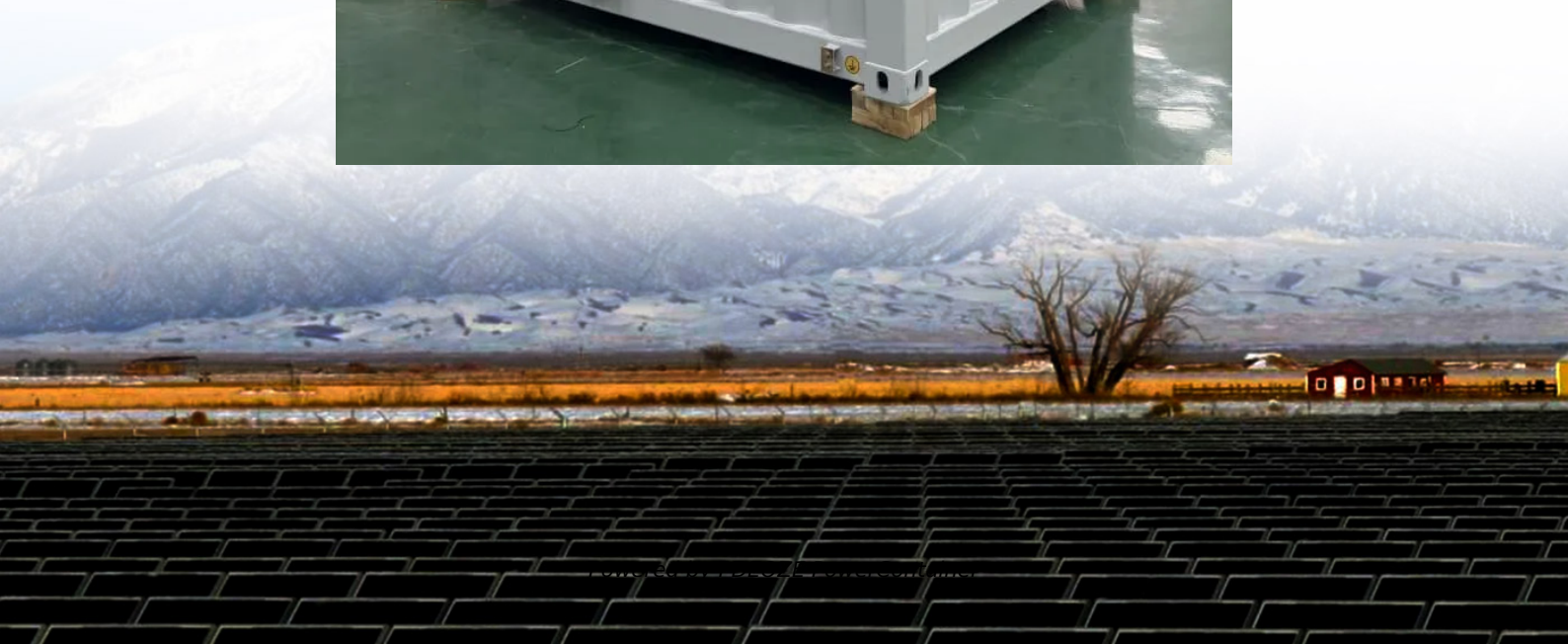


PDEOZE PowerContainer

What does the new energy battery cabinet include in the annual inspection



Overview

Why do you need a battery maintenance program?

A properly implemented maintenance program will aid in prolonging battery life, prevent avoidable battery failures, reduce premature battery replacement, ensure that the battery systems is charged properly at full capacity and deliver it the stored energy to the load when required.

What are the IEEE Standards for battery maintenance & testing?

The IEEE Standards provide recommended practices and schedule for maintenance and testing, as well as guidance for determining when batteries should be replaced.

How often should a battery be inspected?

Measure the electrolyte temperature of 10% or more of the battery cells. At least once per year, the quarterly inspection will be augmented as follows: In the case of a lead-antimony battery, measure and record specific gravity and electrolyte temperature of all cells.

What is a battery capacity test?

A battery capacity test will consist of a controlled current discharge of the battery systems in order to determine the capacity at the rate determined by the load reserve time requirements or at the manufacturer's claimed performance rate for a specified time.

When should a battery be tested?

When the battery shows signs of degradation (decrease in 10% from last test) or is below 90% of the manufacturers rated capacity it is recommended that the batteries be capacity tested annually.

When should a car battery be replaced?

Once the battery capacity is determined to be less than 80%, it is recommended that the battery be replaced since at this capacity, the rate of deterioration is increasing even though there may be ample capacity to meet the existing load requirements.

What does the new energy battery cabinet include in the annual ins

A properly implemented maintenance program will aid in prolonging battery life, prevent avoidable battery failures, reduce premature battery replacement, ensure that the battery systems is charged properly at full capacity and deliver it the stored energy to the load when required.

The IEEE Standards provide recommended practices and schedule for maintenance and testing, as well as guidance for determining when batteries should be replaced.

Measure the electrolyte temperature of 10% or more of the battery cells. At least once per year, the quarterly inspection will be augmented as follows: In the case of a lead-antimony battery, measure and record specific gravity and electrolyte temperature of all cells.

A battery capacity test will consist of a controlled current discharge of the battery systems in order to determine the capacity at the rate determined by the load reserve time requirements or at the manufacturer's claimed performance rate for a specified time.

When the battery shows signs of degradation (decrease in 10% from last test) or is below 90% of the manufacturers rated capacity it is recommended that the batteries be capacity tested annually.

Once the battery capacity is determined to be less than 80%, it is recommended that the battery be replaced since at this capacity, the rate of deterioration is increasing even though there may be ample capacity to meet the existing load requirements.

What does the outdoor energy storage power battery cabinet include Designed for harsh

environments and seamless integration, this IP54-rated solution features a 105KW bi ...

Sep 13, 2024 · The energy storage cabinet encompasses multiple essential components, including 1. Battery systems, 2. Power management systems, 3. Thermal management ...

Who Cares About Battery Inspection? (And Why You Should Too) Let's face it - batteries aren't exactly the rock stars of the energy world. But when your solar-powered concert stage goes ...

4 days ago · Discover best practices for battery inspection, maintenance, and testing in this expert white paper from Eagle Eye Power Solutions. Learn how to enhance battery reliability and ...

Why Modern Energy Systems Demand Rigorous Testing Protocols Can your battery cabinets withstand real-world operational stresses while maintaining optimal efficiency? As global ...

Sep 22, 2024 · The energy storage cabinet encompasses a sophisticated array of components and technologies designed to facilitate the effective storage and management of electricity generated from various sources. 1. ...

Why do you need a battery maintenance program? A properly implemented maintenance program will aid in prolonging battery life, prevent avoidable battery failures, reduce premature battery ...

Why Do 43% of Energy Storage Failures Originate From Cabinet Defects? When was the last time your maintenance team thoroughly reviewed the battery cabinet inspection checklist? In ...

Ever wondered why your smartphone battery suddenly dies at 30%? Now imagine that

happening to a warehouse-sized battery storage system. That's why battery energy storage system ...

At least once per year, the quarterly inspection will be augmented as follows: In the case of a lead-antimony battery, measure and record specific gravity and electrolyte temperature of all cells. ...

Sep 22, 2024 · The energy storage cabinet encompasses a sophisticated array of components and technologies designed to facilitate the effective storage and management of electricity ...

Contact Us

For catalog requests, pricing, or partnerships, please visit:
<https://www.pdeozepv.pl>