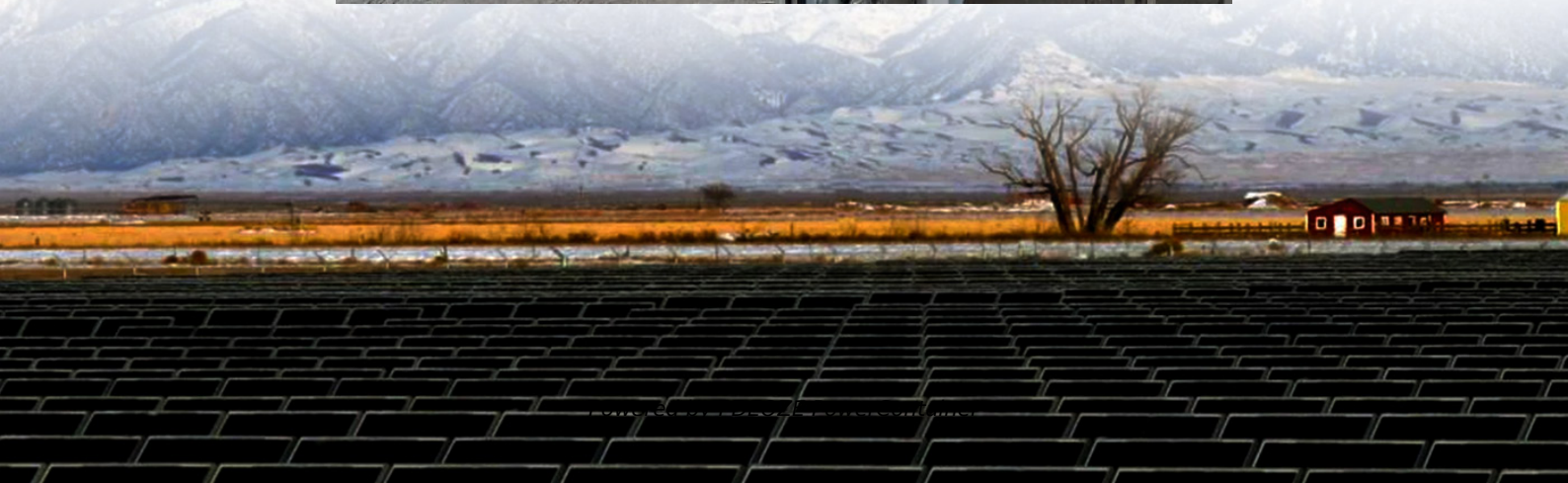
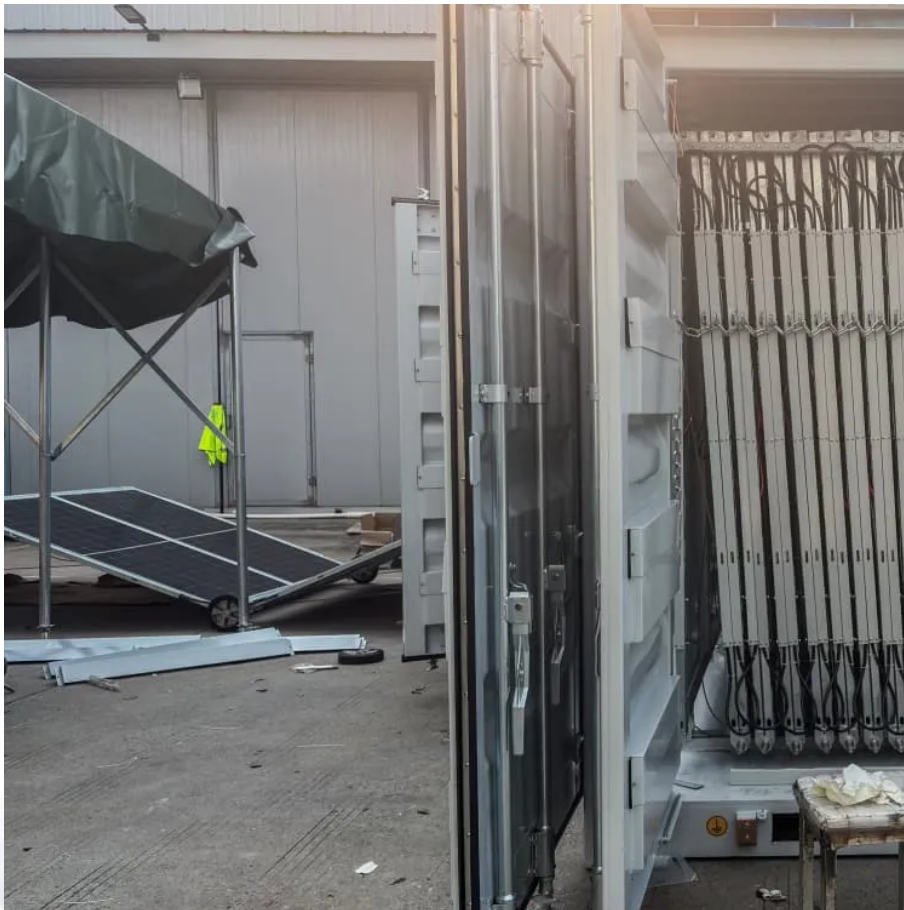


PDEOZE PowerContainer

**What does a solar
communication base station
energy storage system look like**



Overview

The communication base station installs solar panels outdoors, and adds MPPT solar controllers and other equipment in the computer room. The power generated by solar energy is used by the DC load of the base station computer room, and the insufficient power is.

The communication base station installs solar panels outdoors, and adds MPPT solar controllers and other equipment in the computer room. The power generated by solar energy is used by the DC load of the base station computer room, and the insufficient power is.

Connecting communities and enabling communication relies heavily on telecom infrastructure. Remote base stations and telecom towers often face significant challenges when it comes to a consistent, reliable power supply. Many of these sites operate far from conventional grids, making traditional.

Energy consumption is a big issue in the operation of communication base stations, especially in remote areas that are difficult to connect with the traditional power grid, as these consume large amounts of electricity daily. In this aspect, solar energy systems can be very important to meet this.

The one-stop energy storage system for communication base stations is specially designed for base station energy storage. Users can use the energy storage system to discharge during load peak periods and charge from the grid during low load periods, reducing peak load demand and saving electricity.

The communication base station installs solar panels outdoors, and adds MPPT solar controllers and other equipment in the computer room. The power generated by solar energy is used by the DC load of the base station computer room, and the insufficient power is supplemented by energy storage.

Whether you need a grid-tied, off-grid, or hybrid system, with or without battery storage, and even distributed setups, we offer fully customizable renewable energy solutions tailored to your specific needs. Our AIoT cooling

and air conditioning system saves 25% to 40% energy and reduces compressor.

The ESB-series outdoor base station system utilizes solar energy and diesel engines to achieve uninterrupted off grid power supply. Solar power generation is the use of photovoltaic panels to convert solar energy into electrical energy -48V DC, and then stabilize the load power supply through.

What does a solar communication base station energy storage system

Energy storage systems ensure continuous operation. Solar panels are typically installed on the rooftops of these stations, converting sunlight into usable energy. This ensures ...

These include island microgrid solutions, carports integrated with solar power generation, and integrated photovoltaic-storage microgrid systems, all optimized for maximum energy ...

The one-stop energy storage system for communication base stations is specially designed for base station energy storage. Users can use the energy storage system to discharge during ...

The system can effectively store the direct current generated by solar panels in the battery, which can effectively solve the problem of living and industrial electricity in remote ...

Discover comprehensive insights into powering telecom towers and remote base stations with off-grid solar and energy storage solutions. Explore LiFePO4 batteries, system ...

Let's explore how solar energy is reshaping the way we power our communication networks and how it can make these stations greener, smarter, and more self-sufficient.

They store excess energy from the solar arrays for use at night or when the power output of the solar panels does not reach the load of the base station. The unit will often have ...

The system can effectively store the direct current generated by solar panels in the battery, which can effectively solve the problem of living and industrial electricity in remote ...

Discover how base station energy storage empowers reliable telecom connectivity, reduces OPEX, and supports hybrid energy.

By installing solar photovoltaic panels at the base station, the solution converts solar energy into electricity, and then utilizes the energy storage system to store and manage ...

Discover how base station energy storage empowers reliable telecom connectivity, reduces OPEX, and supports hybrid energy.

They store excess energy from the solar arrays for use at night or when the power output of the solar panels does not reach the load of the base station. The unit will often have ...

Energy storage systems ensure continuous operation. Solar panels are typically installed on the rooftops of these stations, converting sunlight into usable energy. This ensures a consistent power supply, even ...

Let's explore how solar energy is reshaping the way we power our communication networks and how it can make these stations greener, smarter, and more self-sufficient.

The communication base station installs solar panels outdoors, and adds MPPT solar controllers and other equipment in the computer room. The power generated by solar energy is used by ...

Contact Us

For catalog requests, pricing, or partnerships, please visit:
<https://www.pdeozepv.pl>