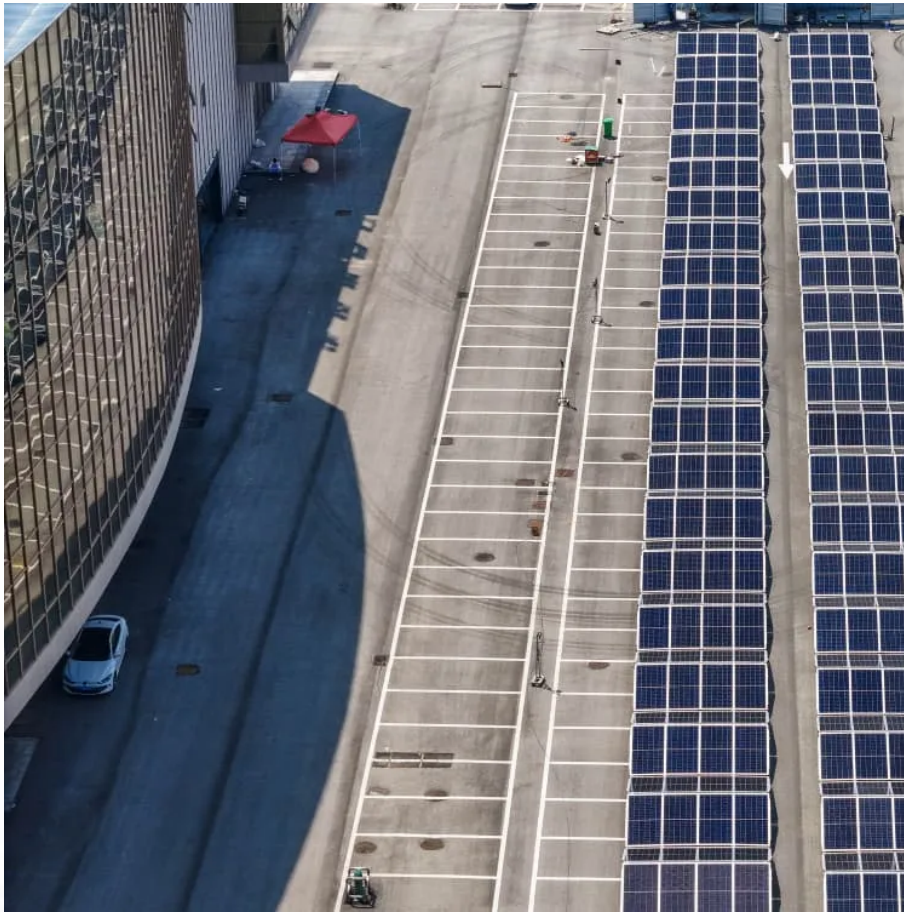


## **PDEOZE PowerContainer**

# **What are the battery cabinet connection methods**



## What are the battery cabinet connection methods

---

The methods for connecting lithium-ion batteries in series and parallel, and the precautions to observe when doing so.

To ensure optimal battery performance and longevity, it is essential to properly match batteries with similar characteristics, including capacity, voltage, and chemistry, when connecting them in series, parallel, or ...

The first thing you need to know is that there are three primary ways to successfully connect batteries: The first is via a series connection, the second is called a ...

To ensure optimal battery performance and longevity, it is essential to properly match batteries with similar characteristics, including capacity, voltage, and chemistry, when connecting them ...

Securing the battery storage cabinet involves using appropriate methods and materials to ensure stability and safety. Begin by selecting the correct fasteners for your wall or ...

Control wiring can be routed through the sides of the battery cabinets in side by side configurations or through the top of the battery cabinets using conduit in standalone ...

Learn how to wire UPS batteries safely with our detailed step-by-step guide. From installation location to proper battery connection and wiring tips, ensure a secure and efficient UPS setup ...

Learn how to properly connect and attach batteries for various devices and applications with helpful tips and techniques for a secure and efficient battery link.

The methods for connecting lithium-ion batteries in series and parallel, and the precautions to observe when doing so.

The first thing you need to know is that there are three primary ways to successfully connect batteries: The first is via a series connection, the second is called a parallel connection, and the third option is a ...

Connect the power system's battery cable terminated in an Anderson connector to the first battery cabinet's battery cable terminated in a mating Anderson connector.

This article is a detailed guide on how to put batteries, how to identify the positive and negative sides, and the correct procedure for different types of installations as given by ...

NOTE: This procedure describes how to position and interconnect several battery cabinets. If your system only has one battery cabinet, you only need to follow step 2 and step 3.

## Contact Us

---

For catalog requests, pricing, or partnerships, please visit:  
<https://www.pdeozepv.pl>