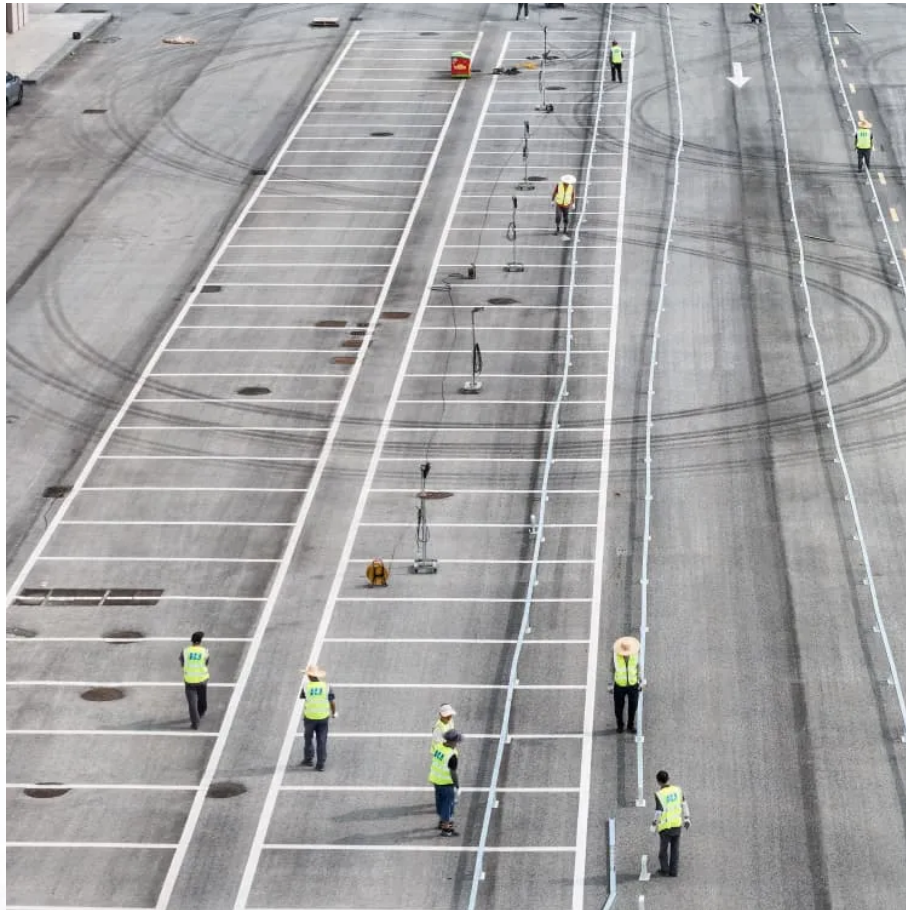


PDEOZE PowerContainer

Twenty years of communication base station batteries



Twenty years of communication base station batteries

The rising demand for higher power capacity and longer battery life in base stations, coupled with the ongoing miniaturization of these stations (particularly micro and ...

Energy Storage in Telecom Base Stations: Innovations With the relentless global expansion of 5G networks and the increasing demand for data, communication base stations face ...

Lithium-ion batteries, particularly Lithium Iron Phosphate (LiFePO₄) batteries, dominate the market due to their superior energy density, longer lifespan, and improved safety features ...

With their small size, lightweight, high-temperature performance, fast recharge rate and longer life, the lithium-ion battery has gradually replaced the traditional lead-acid battery ...

Valve-regulated sealed lead-acid batteries are currently the most mainstream and widely used lead-acid base station telecommunication batteries. These batteries consist of multiple battery cells connected in ...

Telecom batteries refer to batteries that are used as a backup power source for wireless communications base stations. In the event that an external power source cannot be used, the telecom battery can provide a ...

Focused on the engineering applications of batteries in the communication stations, this paper introduces the selections, installations and maintenances of batteries for communication

The transition to lithium-ion (Li-ion) batteries in communication base stations is propelled by operational efficiency demands and environmental regulatory pressures.

Valve-regulated sealed lead-acid batteries are currently the most mainstream and widely used lead-acid base station telecommunication batteries. These batteries consist of ...

Why Are Traditional Batteries Failing Our 5G Future? As global 5G deployments surge 38% year-over-year (Omdia, Q2 2023), communication base station lithium battery solutions face ...

Telecom batteries refer to batteries that are used as a backup power source for wireless communications base stations. In the event that an external power source cannot be ...

Once installed in communication base stations, these batteries typically do not require replacement for several years. Therefore, it is crucial to enhance battery maintenance ...

Contact Us

For catalog requests, pricing, or partnerships, please visit:
<https://www.pdeozepv.pl>