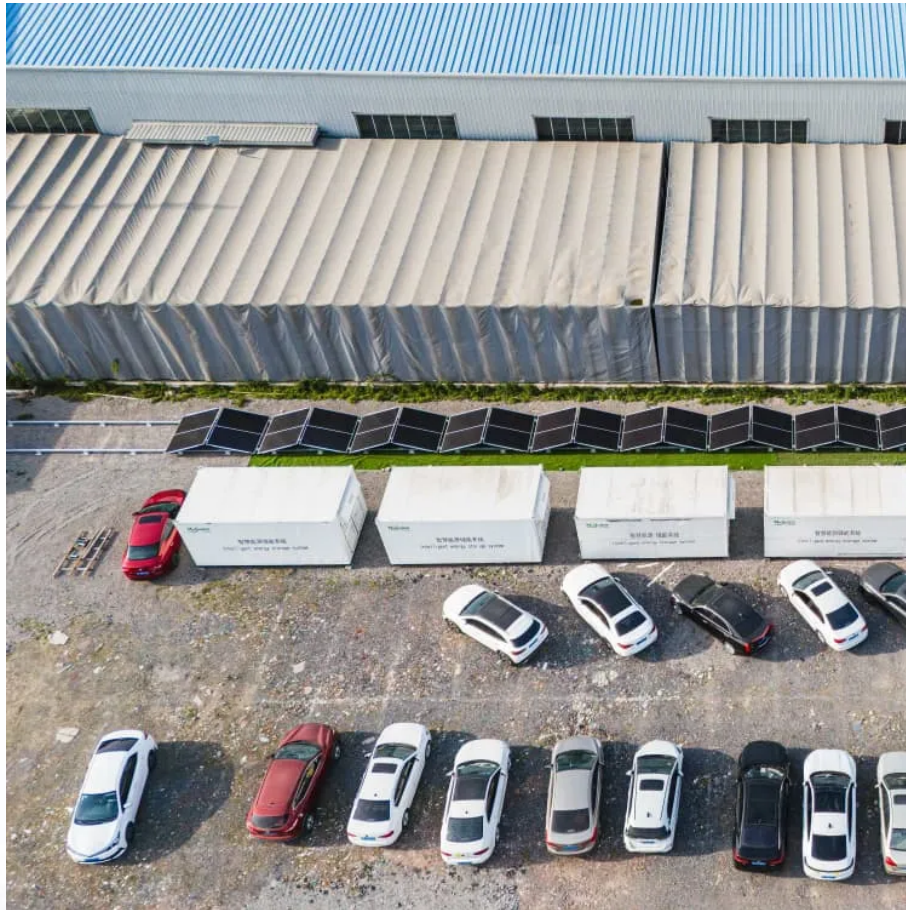


PDEOZE PowerContainer

The role of substation battery cabinet



The role of substation battery cabinet

Substation batteries are large-scale energy storage units installed within electrical substations. Their primary purpose is to supply backup power during outages, support grid regulation, and ...

The substation batteries for the DC system must be in operation 24/7 - 365 - NOT just for backup power, but also to provide the current needed for day-to-day switching operations

Learn about the critical role of batteries in substations and field devices like reclosers. Explore the different types of batteries used, their functions, and the benefits they offer.

In this guide, we break down the essential role of substation battery systems, best practices for installation, the importance of regular maintenance, and what to watch for to ...

Substation battery racks provide instant backup power during grid failures, enabling substations to maintain operations. They stabilize voltage fluctuations by delivering consistent DC power to ...

Substation battery rooms are extremely important in ensuring the continuous operation of a substation. The batteries provide emergency backup power to the substation in case of a ...

The primary role of the substation battery system is to provide a source of energy that is independent of the primary ac supply, so that in the event of the loss of the primary supply the ...

Typically, there are either one or two types of battery systems within each substation. There may be a "station power" battery system to power the switchgear controls, which typically operates at 125VDC.

Typically, there are either one or two types of battery systems within each substation. There may be a "station power" battery system to power the switchgear controls, which typically operates ...

These batteries work in conjunction with battery chargers to provide essential backup power, support communication systems, and enhance overall substation automation.

Substation batteries are large-scale energy storage units installed within electrical substations. Their primary purpose is to supply backup power during outages, support grid regulation, and ensure continuous operation ...

Battery Energy Storage Systems (BESS) play a pivotal role in grid recovery through black start capabilities, providing critical energy reserves during catastrophic grid

Contact Us

For catalog requests, pricing, or partnerships, please visit:
<https://www.pdeozepv.pl>