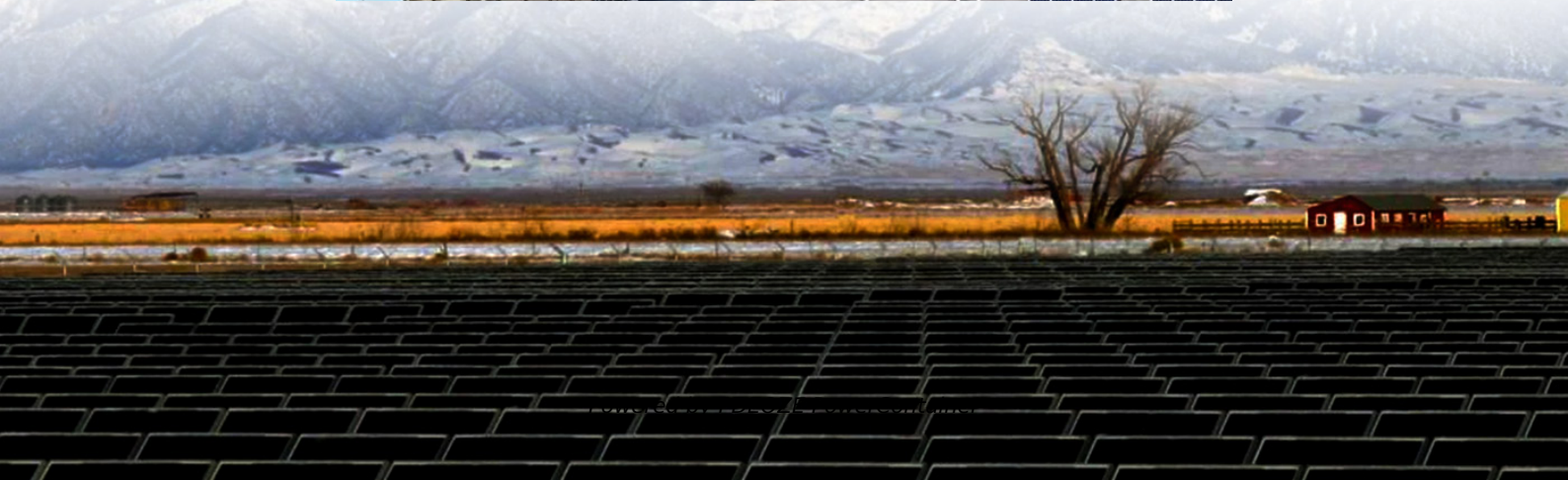
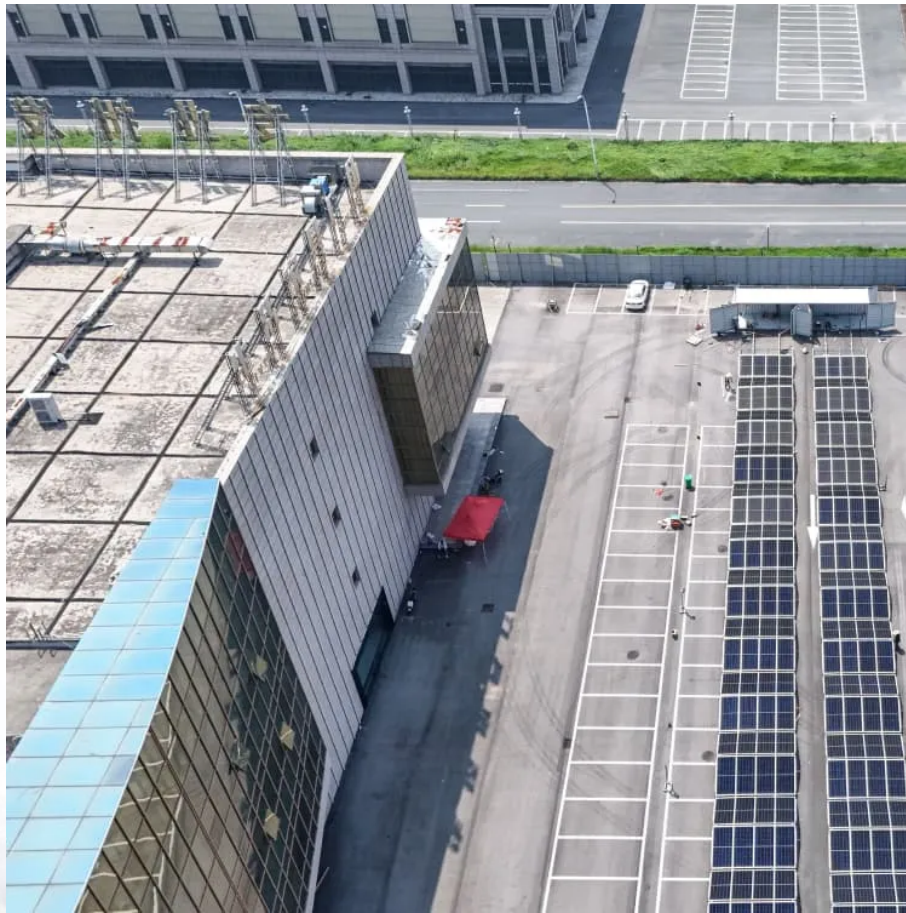


## **PDEOZE PowerContainer**

# **The difference between external discharge and outdoor power supply**



## Overview

---

What is external discharge function?

The external discharge function refers to the ability of new energy vehicles equipped with this feature to output their stored electrical energy through a specific interface to power external electrical equipment. What is V2G ?

V2G (Vehicle to Grid) enables interaction between electric vehicles and the power grid.

What is a standalone external power supply?

A standalone external power supply supplies power outside the main enclosure of an electronic device. It converts AC power from a wall outlet into the DC voltage that the electronic device requires. It is also known as power converters or wall warts.

What is external power output?

The external power output feature enables electric vehicles (EVs) to supply electricity to external devices through a specialized interface. This capability allows EVs to act as portable power sources for various applications. What is V2G?

Vehicle-to-Grid (V2G) technology facilitates energy exchange between electric vehicles and the power grid.

What are the advantages and disadvantages of external power supplies?

Design Considerations: There are several advantages to external power supplies, but they also have some disadvantages. Additionally, they are bulky and complex to transport, and they do not appear as integrated or as attractive as internal solutions. External power supplies can also fail due to faulty cables.

What is external discharge function of new energy vehicles?

External Discharge Function of New Energy Vehicles The external discharge function refers to the ability of new energy vehicles equipped with this feature to output their stored electrical energy through a specific interface to power external electrical equipment. What is V2G ?

.

What are the four main external power supply functions?

Today, we will explore the four main external power supply functions: V2L, V2V, V2H, and V2G. V2L allows electric vehicles to supply power to external devices, similar to a mobile power bank. This function is useful for camping, picnics, construction sites, and emergency power supply situations.

## The difference between external discharge and outdoor power supply

---

The external discharge function refers to the ability of new energy vehicles equipped with this feature to output their stored electrical energy through a specific interface to power external electrical equipment. What is V2G ? V2G (Vehicle to Grid) enables interaction between electric vehicles and the power grid.

A standalone external power supply supplies power outside the main enclosure of an electronic device. It converts AC power from a wall outlet into the DC voltage that the electronic device requires. It is also known as power converters or wall warts.

The external power output feature enables electric vehicles (EVs) to supply electricity to external devices through a specialized interface. This capability allows EVs to act as portable power sources for various applications. What is V2G? Vehicle-to-Grid (V2G) technology facilitates energy exchange between electric vehicles and the power grid.

Design Considerations: There are several advantages to external power supplies, but they also have some disadvantages. Additionally, they are bulky and complex to transport, and they do not appear as integrated or as attractive as internal solutions. External power supplies can also fail due to faulty cables.

External Discharge Function of New Energy Vehicles The external discharge function refers to the ability of new energy vehicles equipped with this feature to output their stored electrical energy through a specific interface to power external electrical equipment. What is V2G ?

Today, we will explore the four main external power supply functions: V2L, V2V, V2H, and V2G. V2L allows electric vehicles to supply power to external devices, similar to a mobile power bank. This function is useful for camping, picnics, construction sites, and

emergency power supply situations.

Oct 29, 2025 · Learn how to choose between external & internal power supplies to optimize performance. Discover the right WEHO solution for your project.

Dec 13, 2024 · The external power output feature enables electric vehicles (EVs) to supply electricity to external devices through a specialized interface. This capability allows EVs to act as portable power sources for various ...

Aug 5, 2025 · Grid Peak Shaving: Vehicles discharge power to the grid during peak demand periods, alleviating power supply pressure; charging at low prices during off-peak periods ...

Jan 13, 2021 · Explore the pros and cons of integrated vs. modular power supplies in your system, with guidance on choosing between external and internal power designs.

Jan 13, 2021 · Explore the pros and cons of integrated vs. modular power supplies in your system, with guidance on choosing between external and internal power designs.

5 days ago · These vehicles require specialised DC V2L discharge inverters for external power supply. DC V2L draws power from the vehicle's DC charging port, then converts the direct ...

Apr 21, 2025 · Considerations for Choosing Between Internal and External Options When comparing internal and external AC DC switching adapter, several factors should be taken into ...

With the continuous advancement of new energy vehicle technology, cars are no longer just a means of transportation but also mobile energy storage units. V2X (Vehicle-to-Everything) ...

With the continuous advancement of new energy vehicle technology, cars are no longer just a means of transportation but also mobile energy storage units. V2X (Vehicle-to-Everything) technology enables electric vehicles to ...

Dec 13, 2024 · The external power output feature enables electric vehicles (EVs) to supply electricity to external devices through a specialized interface. This capability allows EVs to act ...

Jun 28, 2024 · An electronic device or system must decide whether to use an internal or external power supply. Based on specific needs and applications, each type offers distinct advantages and disadvantages. You can ensure ...

Apr 21, 2025 · Considerations for Choosing Between Internal and External Options When comparing internal and external AC DC switching adapter, several factors should be taken into account. Reliability is paramount in ...

Nov 27, 2024 · The V2L discharge power typically ranges from 2kW to 6kW, which can meet the needs of common household appliances. DC V2L extracts power through the vehicle's DC ...

Mar 12, 2024 · Outdoor portable power supply is generally built-in high energy density lithium-ion batteries, long cycle life, light weight and easy to carry, and its overall performance is more ...

Oct 29, 2025 · Learn how to choose between external & internal power supplies to optimize performance. Discover the right WEHO solution for your project.

Jun 28, 2024 · An electronic device or system must decide whether to use an internal or external power supply. Based on specific needs and applications, each type offers distinct advantages ...

## Contact Us

---

For catalog requests, pricing, or partnerships, please visit:  
<https://www.pdeozepv.pl>