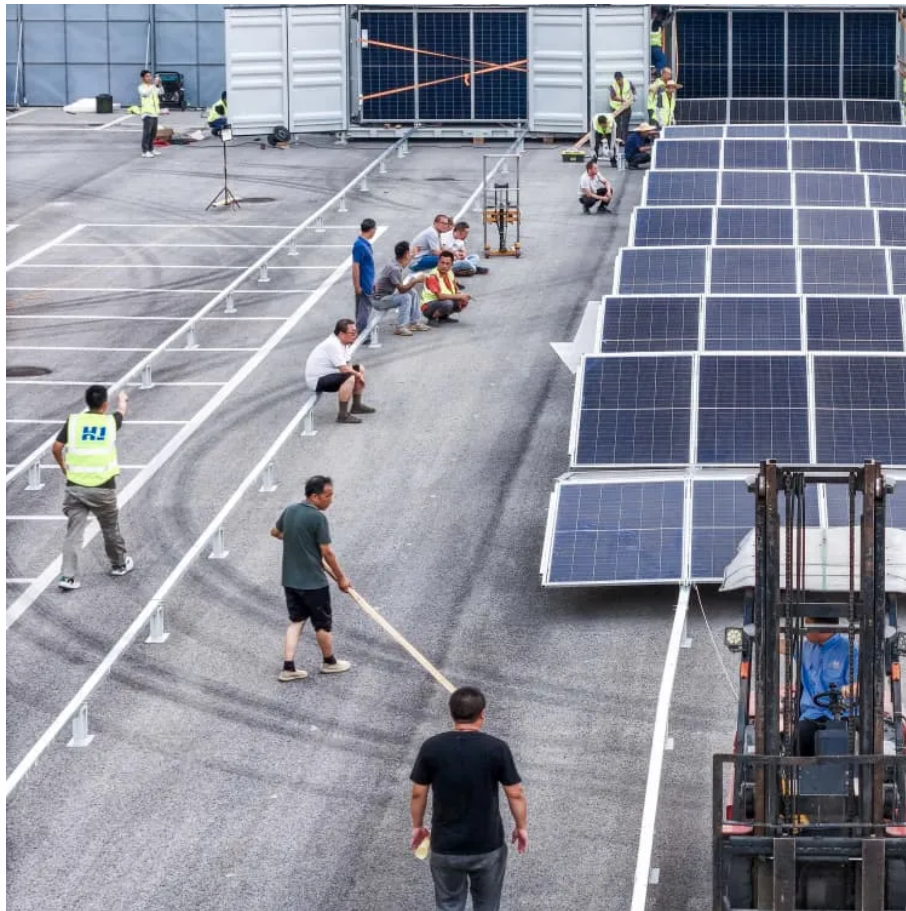


PDEOZE PowerContainer

Solar panel power squared



Solar panel power squared

Solar panels have become a cornerstone of renewable energy, but many wonder: How much power can a single square meter of solar panels actually produce? Let's break down the ...

Solar Panel Output CalculatorSolar Panels Kwh CalculatorSolar Panel Area Per KwWattage is the output of solar panelsthat is calculated by multiplying the volts by amps. Here, the amount of the force of the electricity is represented by volts. The aggregate amount of energy used is expressed in amps (amperes). Output ratings on most solar panels range between 250 watts to 400 watts.See more on energytheory

SUNGOLDPOWER 6PCS 500W Solar Panels Monocrystalline UL 61730, Grade A ...Solar Cell, Waterproof IP68, High Efficiency Solar Panel On/Off Grid Supplies

Solar energy generation per square meter can vary significantly, but typical values indicate that 1 square meter of solar panels can produce between 150 to 400 watts of ...

Understanding solar panel output is crucial for making smart energy decisions. A typical solar panel generates between 1.3 to 1.6 kilowatt-hours (kWh) per square foot annually,

...

Solar panels produce about 15-20 watts per square foot. The amount depends on the panel's efficiency, orientation, and sunlight exposure, so results may vary. The average

...

Solar panels are quietly transforming rooftops around the world, turning sunlight into electricity and helping homeowners slash utility bills. If you're thinking about going solar,

...

On average, a residential solar panel can yield about 15 watts per square foot; however, actual performance may differ.

Solar panels have become a cornerstone of renewable energy, but many wonder: How much power can a single square meter of solar panels actually produce? Let's break down the science behind photovoltaic efficiency.

Divide the solar panel wattage (for 100W, 150W, 170W, 200W, 220W, 300W, 350W, 400W, 500W) by the solar panel area to get the solar panel output per square foot for a specific solar ...

Most solar panels have cells that can convert 17-23% of the sunlight that hits them into usable solar energy.

Learn how to measure solar panel efficiency using solar panel watts per square meter with this comprehensive guide.

Understanding solar panel output is crucial for making smart energy decisions. A typical solar panel generates between 1.3 to 1.6 kilowatt-hours (kWh) per square foot annually, ...

Factors to Consider for Solar Panel Output Per Square Meter. Region: If you are living in countries near to poles, you will receive less sunlight. In comparison to the people ...

Contact Us

For catalog requests, pricing, or partnerships, please visit:
<https://www.pdeozepv.pl>