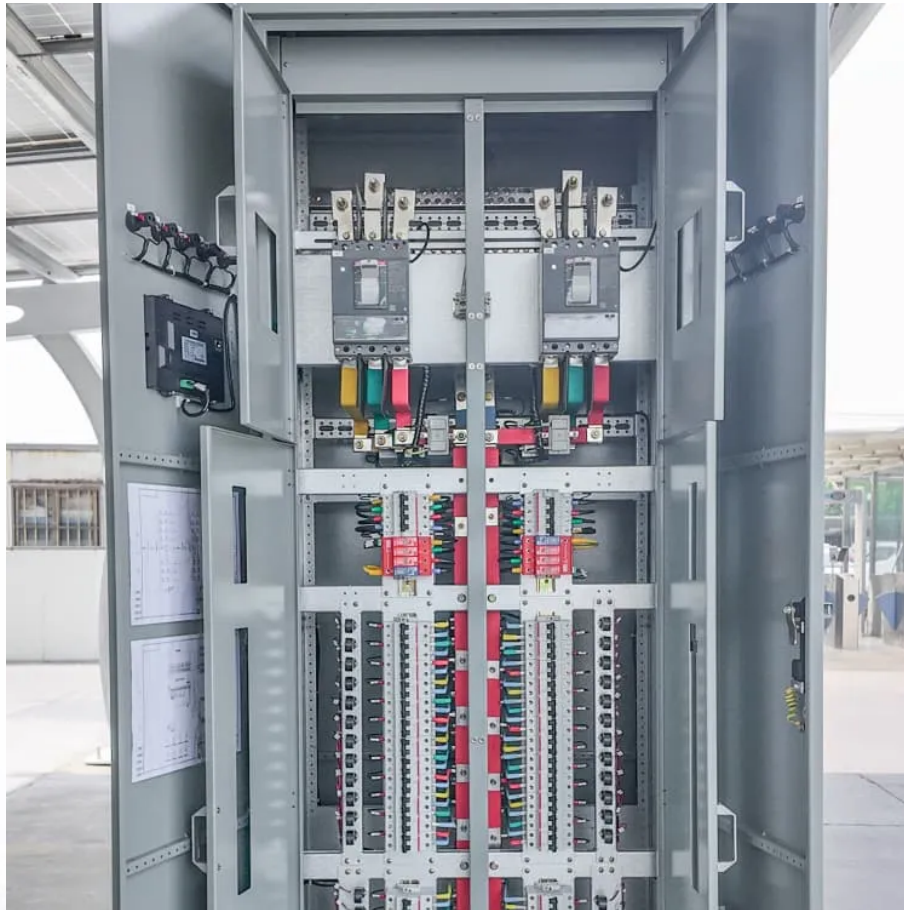


## PDEOZE PowerContainer

# Lithium battery pack internal parallel connection



## Lithium battery pack internal parallel connection

---

When lithium batteries of different voltages are connected in parallel, it is easy to cause internal friction and even damage the battery with the lowest voltage. The size of the ...

In a lithium battery pack, multiple lithium cells are connected through series and parallel connections to achieve the required sufficient working voltage. If you need higher capacity and greater current, you ...

Understand how to connect lithium batteries in parallel and series. Get practical tips and avoid common pitfalls. Start optimizing your battery setup today!

Let's assume I am going to build a Li-ion battery pack with 12 18650s, where I connect four cells together in parallel and then the three sets of four in ...

When lithium batteries are connected in parallel, the voltage remains the same, and the battery capacity increases. This configuration reduces the overall internal resistance of the ...

Learn how to safely connect lithium batteries in series and parallel. Avoid risks, extend battery life and build reliable power systems with our expert guide.

Understand how to connect lithium batteries in parallel and series. Get practical tips and avoid common pitfalls. Start optimizing your battery setup today!

Unlock the ultimate guide to using LiFePO4 lithium batteries in series and parallel. Learn configurations, benefits, and tips for optimal performance!

In a lithium battery pack, multiple lithium cells are connected through series and parallel connections to achieve the required sufficient working voltage. If you need higher ...

Connecting battery packs in series increases the output voltage while keeping the capacity the same. In contrast, wiring them in parallel boosts the total capacity without ...

Let's assume I am going to build a Li-ion battery pack with 12 18650s, where I connect four cells together in parallel and then the three sets of four in series. My understanding is that a BMS ...

As shown below in battery bank A, B, and C, making parallel connections of higher voltage lithium batteries increases the redundancy and overall performance of the electrical system versus ...

When lithium batteries of different voltages are connected in parallel, it is easy to cause internal friction and even damage the battery with the lowest voltage. The size of the internal resistance affects the battery's ...

Learn how to safely connect lithium batteries in series and parallel. Avoid risks, extend battery life and build reliable power systems with our expert guide.

For projects requiring rapid deployment, our pre-configured 12V lithium battery packs support plug-and-play parallel expansion. Hybrid configurations combine the voltage ...

For projects requiring rapid deployment, our pre-configured 12V lithium battery packs support plug-and-play parallel expansion. Hybrid configurations combine the voltage-boosting benefits of series ...

When lithium batteries are connected in parallel, the voltage remains the same, and the

battery capacity increases. This configuration reduces the overall internal resistance of the battery pack, thus extending ...

## Contact Us

---

For catalog requests, pricing, or partnerships, please visit:  
<https://www.pdeozepv.pl>