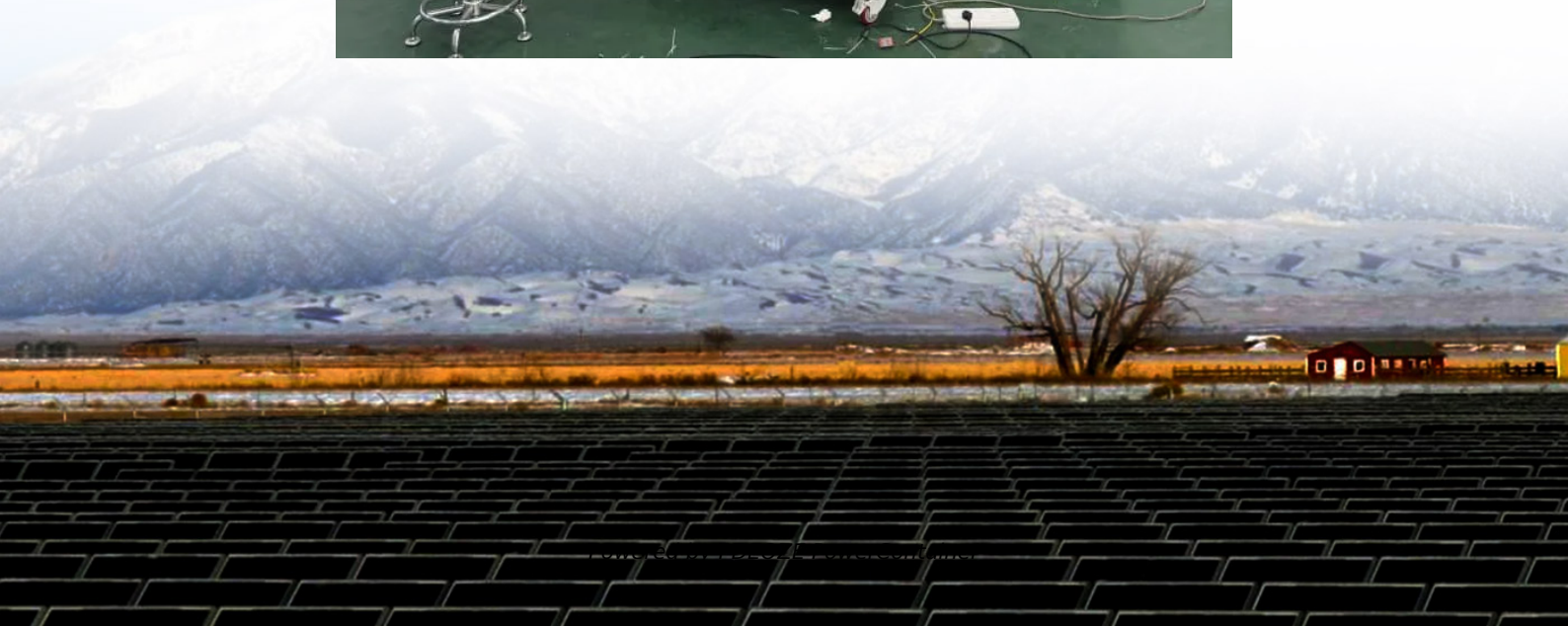
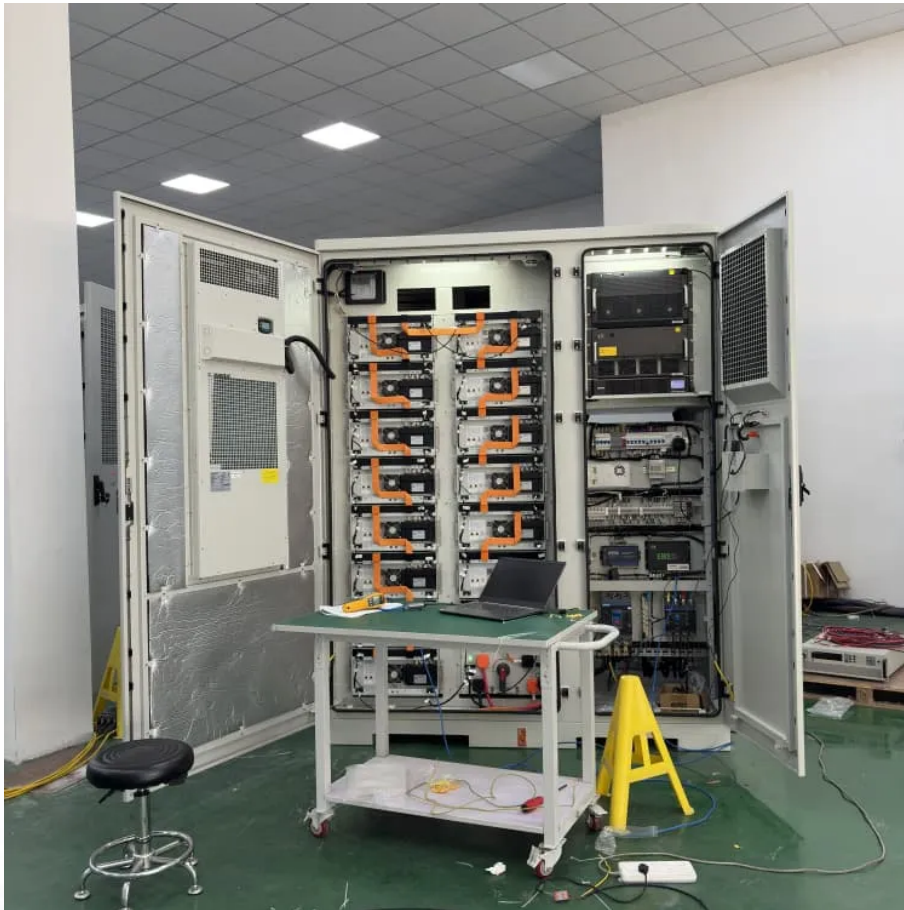


PDEOZE PowerContainer

Is flywheel energy storage DC or AC



Overview

Electric energy is stored in the flywheel rotor as kinetic energy. The shape and material of the flywheel directly affect the amount of energy that can be stored. The stored energy is directly proportional to the square of the angular velocity and the moment of inertia of the flywheel.

Electric energy is stored in the flywheel rotor as kinetic energy. The shape and material of the flywheel directly affect the amount of energy that can be stored. The stored energy is directly proportional to the square of the angular velocity and the moment of inertia of the flywheel.

Flywheel energy storage (FES) works by spinning a rotor (flywheel) and maintaining the energy in the system as rotational energy. When energy is extracted from the system, the flywheel's rotational speed is reduced as a consequence of the principle of conservation of energy; adding energy to the.

rces, like photovoltaic or wind power plants. In such systems store energy in time w en there is no demand from electricity users. A flywheel energy storage system intended for supporting alternative autonomous sources shall exhibit very high energy efficiency (due to the necessity of long.

In FESSs, electric energy is transformed into kinetic energy and stored by rotating a flywheel at high speeds. An FESS operates in three distinct modes: charging, discharging, and holding. Charging mode: During this phase, the flywheel rotor absorbs external energy and stores it as kinetic energy.

Flywheel energy storage technologies provide reliable backup power with many attractive features compared with conventional battery technologies. Flywheels have been around for thousands of years. The earliest application is likely the potter's wheel. Perhaps the most common application in more.

Flywheel energy storage stores electrical energy in the form of mechanical energy in a high-speed rotating rotor. The core technology is the rotor material, support bearing, and electromechanical control system. This chapter mainly introduces the main structure of the flywheel energy storage.

Flywheel Energy Storage Systems (FESS) rely on a mechanical working principle: An electric motor is used to spin a rotor of high inertia up to 20,000-50,000 rpm. Electrical energy is thus converted to kinetic energy for storage. For discharging, the motor acts as a generator, braking the rotor to.

Is flywheel energy storage DC or AC

A flywheel energy storage system converts electrical energy supplied from DC or three-phase AC power source into kinetic energy of a spinning mass or converts kinetic energy of a spinning ...

A bidirectional converter adopts either a DC-AC or a DC-DC-AC structure if the input/output of the FESS is a DC bus. In the case of AC input/output, a bidirectional converter ...

Flywheel energy storage (FES) works by spinning a rotor (flywheel) and maintaining the energy in the system as rotational energy.

FESS is an electromechanical energy storage system that comprises of an electrical machine, a back-to-back converter, a DC link capacitor, and a large disc that can interchange electrical power with the ...

Advances in power electronics, magnetic bearings, and flywheel materials coupled with innovative integration of components have resulted in direct current (DC) flywheel energy storage ...

FESS is an electromechanical energy storage system that comprises of an electrical machine, a back-to-back converter, a DC link capacitor, and a large disc that can ...

Flywheel energy storage is defined as a method for storing electricity in the form of kinetic energy by spinning a flywheel at high speeds, which is facilitated by magnetic levitation in an ...

Thanks to the unique advantages such as long life cycles, high power density, minimal environmental impact, and high power quality such as fast response and voltage ...

The MG must be brush-less, with AC current being generated by the inverter for motoring, and then AC current is converted back to DC in generator mode. In most cases, the MG is ...

Each FESS module has a power electronics module which allows its AC motor-generator to interface with a DC bus that is common to several FESS modules. Power and energy can be ...

The flywheel energy storage system presents certain DC power characteristics through the motor controller, and can therefore be connected to the AC grid through a Voltage ...

Contact Us

For catalog requests, pricing, or partnerships, please visit:
<https://www.pdeozepv.pl>