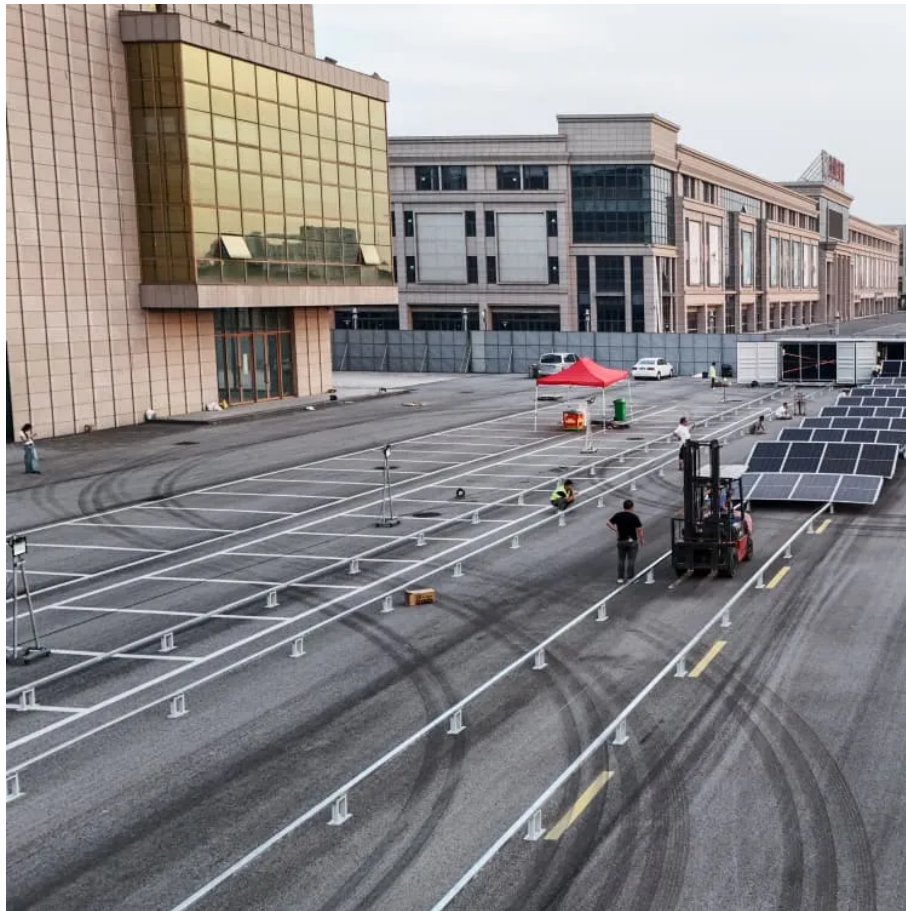


## PDEOZE PowerContainer

# Inverter rated AC output power



## Overview

---

Inverter power,  $P_i$  (W) in watts is calculated by dividing the rated inverter power,  $R_P$  (W) in watts and efficiency,  $E$  in percentage by 100. Inverter power,  $P_i$  (W) =  $R_P$  (W) \*  $E$  / 100

What is rated inverter power?

Inverter power ( $P_i$ ) refers to the power output provided by an inverter, which converts direct current (DC) from sources such as batteries or solar panels into alternating current (AC) used by most household appliances. Rated inverter power represents the inverter's capacity, indicating the maximum volt-amperes (VA) it can handle.

What does AC mean in a power inverter?

Nominal Voltage (AC). This indicates the nominal voltage that is output from the inverter. Rated AC Power Output (VA). This indicates the maximum AC power output from the inverter. Maximum Continuous Current Out AC (A). This indicates that maximum continuous AC current that may be output from the inverter. Peak Efficiency (%).

What are inverter specifications?

Specifications provide the values of operating parameters for a given inverter. Common specifications are discussed below. Some or all of the specifications usually appear on the inverter data sheet. Maximum AC output power This is the maximum power the inverter can supply to a load on a steady basis at a specified output voltage.

What is a rated AC power output?

Maximum Input Voltage DC (V). This indicates the maximum voltage that can be input on the DC side of the inverter. Nominal Voltage (AC). This indicates the nominal voltage that is output from the inverter. Rated AC Power Output (VA). This indicates the maximum AC power output from the inverter. Maximum Continuous Current Out AC (A).

What do kW and kVA mean in inverter specifications?

kW refers to the real or usable power output of an inverter. kVA represents the total power capacity it can carry, including power lost in phase difference (reactive power). For example, an inverter rated at 10 kVA with a power factor of 0.8 can only deliver 8 kW of real power.

How much power does an inverter need?

It's important to note what this means: In order for an inverter to put out the rated amount of power, it will need to have a power input that exceeds the output. For example, an inverter with a rated output power of 5,000 W and a peak efficiency of 95% requires an input power of 5,263 W to operate at full power.

## Inverter rated AC output power

---

Inverter power ( $P_i$ ) refers to the power output provided by an inverter, which converts direct current (DC) from sources such as batteries or solar panels into alternating current (AC) used by most household appliances. Rated inverter power represents the inverter's capacity, indicating the maximum volt-amperes (VA) it can handle.

Nominal Voltage (AC). This indicates the nominal voltage that is output from the inverter. Rated AC Power Output (VA). This indicates the maximum AC power output from the inverter. Maximum Continuous Current Out AC (A). This indicates that maximum continuous AC current that may be output from the inverter. Peak Efficiency (%).

Specifications provide the values of operating parameters for a given inverter. Common specifications are discussed below. Some or all of the specifications usually appear on the inverter data sheet. Maximum AC output power This is the maximum power the inverter can supply to a load on a steady basis at a specified output voltage.

Maximum Input Voltage DC (V). This indicates the maximum voltage that can be input on the DC side of the inverter. Nominal Voltage (AC). This indicates the nominal voltage that is output from the inverter. Rated AC Power Output (VA). This indicates the maximum AC power output from the inverter. Maximum Continuous Current Out AC (A).

kW refers to the real or usable power output of an inverter. kVA represents the total power capacity it can carry, including power lost in phase difference (reactive power). For example, an inverter rated at 10 kVA with a power factor of 0.8 can only deliver 8 kW of real power.

It's important to note what this means: In order for an inverter to put out the rated amount of power, it will need to have a power input that exceeds the output. For

example, an inverter with a rated output power of 5,000 W and a peak efficiency of 95% requires an input power of 5,263 W to operate at full power.

6 days ago · Inverter specifications are technical information that describes an inverter's capabilities, characteristics, and limitations. They guide users in choosing an inverter that suits ...

Nov 3, 2025 · Conclusion Knowing the difference between kW and kVA prevents common inverter sizing mistakes. For solar or hybrid applications, always ask about the power factor and real ...

Aug 24, 2020 · The rated output power of inverter is the continuous output power, which refers to the output power of the inverter under the rated voltage current. It is the power that can be ...

Aug 24, 2020 · The rated output power of inverter is the continuous output power, which refers to the output power of the inverter under the rated voltage current. It is the power that can be continuously and stably output ...

Just make sure the power inverter is rated for the power (in watts) for the amount of power that you are looking to use. So basically now you know the amount of power that can be drawn ...

Rated AC power output (V?A): This indicates the maximum AC power output from the inverter. Maximum continuous current out AC (A): This indicates the maximum continuous AC current ...

Apr 21, 2025 · Understand the key differences between inverter peak power and rated power. Discover the importance of both, how they affect your appliances.

3 days ago · Inverter power ( $P_i$ ) refers to the power output provided by an inverter,

which converts direct current (DC) from sources such as batteries or solar panels into alternating current (AC) ...

Nov 3, 2025 · Conclusion Knowing the difference between kW and kVA prevents common inverter sizing mistakes. For solar or hybrid applications, always ask about the power factor and real kW output. It makes your ...

4 days ago · The article provides an overview of inverter functions, key specifications, and common features found in inverter systems, along with an example of power calculations and ...

2 days ago · The nominal AC output power represents the rated power output of the solar inverter under standard operating conditions. It indicates the maximum power the inverter can continuously supply to the electrical ...

Nov 17, 2023 · Solar inverter specifications include input and output specs highlighting voltage, power, efficiency, protection, and safety features.

2 days ago · The nominal AC output power represents the rated power output of the solar inverter under standard operating conditions. It indicates the maximum power the inverter can ...

6 days ago · Inverter specifications are technical information that describes an inverter's capabilities, characteristics, and limitations. They guide users in choosing an inverter that suits their needs, whether for homes, solar ...

Apr 21, 2025 · Understand the key differences between inverter peak power and rated power. Discover the importance of both, how they affect your appliances.

## Contact Us

---

For catalog requests, pricing, or partnerships, please visit:  
<https://www.pdeozepv.pl>