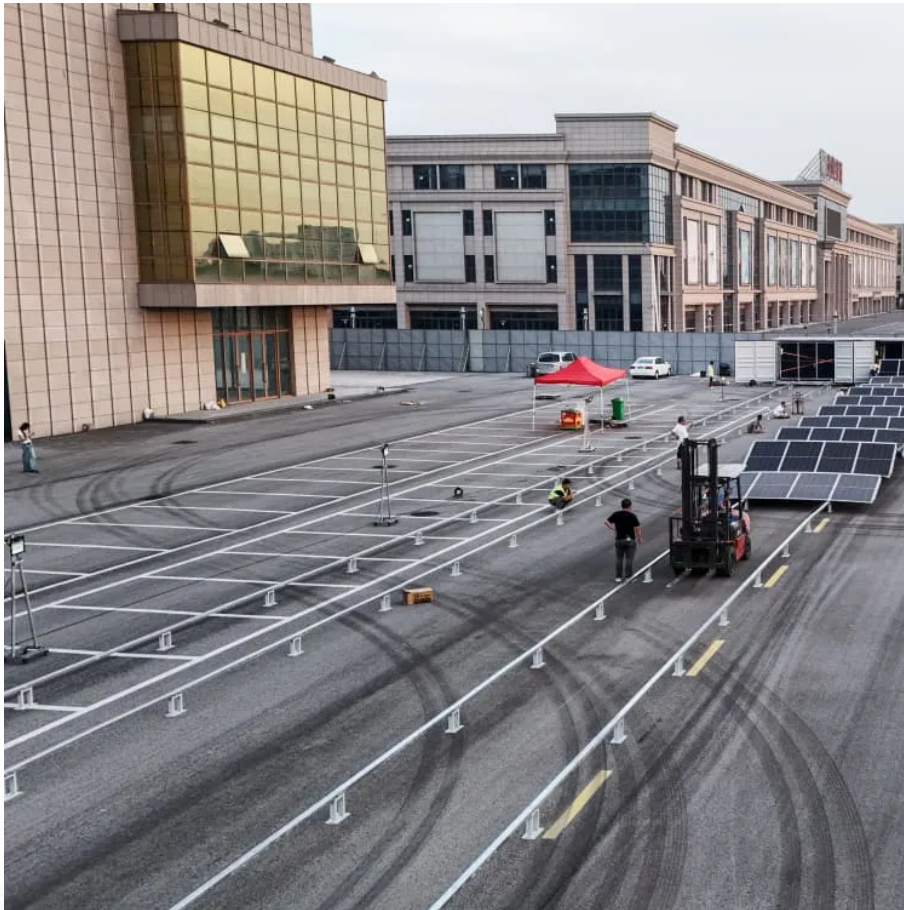


PDEOZE PowerContainer

Inverter pure sine wave self-operated amorphous



Inverter pure sine wave self-operated amorphous

Compared to flatter 1000W units or less advanced models, this inverter handles inductive loads like home theater systems and refrigerators effortlessly, thanks to its pure sine ...

We've put together this guide to help you navigate the world of pure sine wave inverters to find the one that fits your needs.

In this comprehensive guide, we'll delve into the fundamentals of pure sine wave inverters examining their operational principles, technical advantages over modified sine wave ...

What Is a Pure Sine Wave Inverter? A pure sine wave inverter is a device that converts direct current (DC) electricity from batteries or solar panels into alternating current (AC) electricity ...

Compared to flatter 1000W units or less advanced models, this inverter handles inductive loads like home theater systems and refrigerators effortlessly, thanks to its pure sine ...

What Is a Pure Sine Wave Inverter? A pure sine wave inverter is a device that converts direct current (DC) electricity from batteries or solar panels into alternating current (AC) electricity that matches what comes from your ...

Discover how pure sine wave inverters work, why they're essential for clean power, and which sustainable brands offer the best options for you.

This guide includes an overview of the top 5 pure sine wave solar inverters designed for RVs, homes, trucks, and off-grid solar systems. Each product combines ...

Whether you're a seasoned solar enthusiast or new to the off-grid world, this article will equip you with the knowledge to make an informed decision. Let's explore the world of ...

We've put together this guide to help you navigate the world of pure sine wave inverters to find the one that fits your needs.

Explore the benefits of pure sine wave inverters for energy efficiency and sensitive electronics, including key features, performance comparisons, and solar compatibility.

Before diving into the details, you should first know that a pure sine wave inverter converts direct current (DC) into alternating current (AC) with a smooth sine waveform.

Simply wire the power inverter to a 48V battery and then connect it to devices. Easy to operate: LED screen and indicator light, clear working status at a glance!

Whether you're a seasoned solar enthusiast or new to the off-grid world, this article will equip you with the knowledge to make an informed decision. Let's explore the world of pure sine wave inverters and unlock ...

Before diving into the details, you should first know that a pure sine wave inverter converts direct current (DC) into alternating current (AC) with a smooth sine waveform.

Contact Us

For catalog requests, pricing, or partnerships, please visit:

<https://www.pdeozepv.pl>