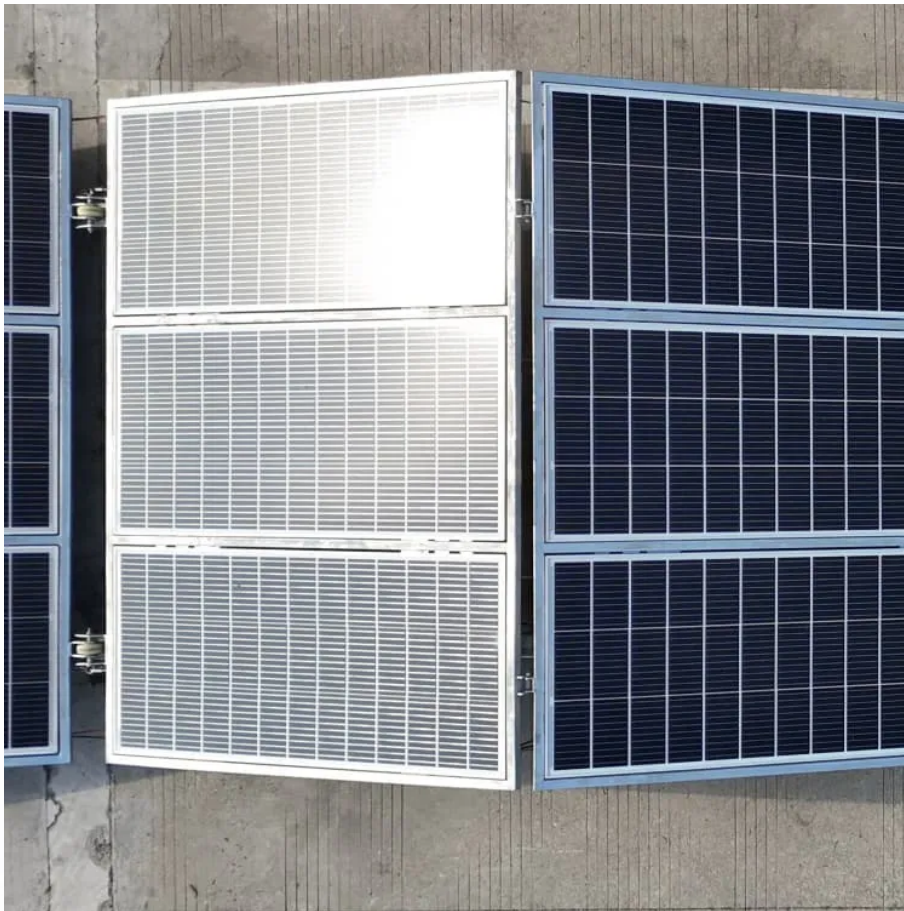


PDEOZE PowerContainer

Inverter current is DC



Overview

The electrical circuits that transform Direct current (DC) input into Alternating current (AC) output are known as DC-to-AC Converters or Inverters. What is a DC to AC inverter?

A DC to AC inverter better known as an inverter is a device that changes direct current (DC) to alternating current (AC). AC electricity is the form of electricity we use at home and office while DC electricity is the type of electricity produced by batteries and solar panels.

What is inverter current?

Inverter current is the electric current drawn by an inverter to supply power to connected loads. The current depends on the power output required by the load, the input voltage to the inverter, and the power factor of the load. The inverter draws current from a DC source to produce AC power.

How does a DC inverter work?

Compressors in a traditional HVAC unit operate at a fixed speed — if the system is on, the compressor will always be at 100%. A DC inverter controls the voltage to the compressor, and therefore its power and speed. Here's how it does it: The inverter converts alternating current (AC) from the power supply to direct current.

How do inverters convert DC voltage to AC voltage?

Most inverters rely on resistors, capacitors, transistors, and other circuit devices for converting DC Voltage to AC Voltage. In alternating current, the current changes direction and flows forward and backward. The current whose direction changes periodically is called an alternating current (AC). It has non-zero frequency.

What is a direct current (DC) inverter?

More than 730 people have received a free quote in the last 60 days. Enter

details in under 3 minutes. In modern heating, ventilation, and air conditioning (HVAC) units, a direct current (DC) inverter is motor control technology that gives the system more control over the compressor power and speed.

How does AC inverter power affect DC input voltage?

The AC inverter power, P_i required by the load determines how much current the inverter needs to draw from the DC source. This is influenced by the efficiency of the conversion process, represented by the power factor, PF. The DC input voltage, V_i provided to the inverter affects the amount of current drawn.

Inverter current is DC

A DC to AC inverter better known as an inverter is a device that changes direct current (DC) to alternating current (AC). AC electricity is the form of electricity we use at home and office while DC electricity is the type of electricity produced by batteries and solar panels.

Inverter current is the electric current drawn by an inverter to supply power to connected loads. The current depends on the power output required by the load, the input voltage to the inverter, and the power factor of the load. The inverter draws current from a DC source to produce AC power.

Compressors in a traditional HVAC unit operate at a fixed speed -- if the system is on, the compressor will always be at 100%. A DC inverter controls the voltage to the compressor, and therefore its power and speed. Here's how it does it: The inverter converts alternating current (AC) from the power supply to direct current.

Most inverters rely on resistors, capacitors, transistors, and other circuit devices for converting DC Voltage to AC Voltage. In alternating current, the current changes direction and flows forward and backward. The current whose direction changes periodically is called an alternating current (AC). It has non-zero frequency.

More than 730 people have received a free quote in the last 60 days. Enter details in under 3 minutes. In modern heating, ventilation, and air conditioning (HVAC) units, a direct current (DC) inverter is motor control technology that gives the system more control over the compressor power and speed.

The AC inverter power, P_i required by the load determines how much current the inverter needs to draw from the DC source. This is influenced by the efficiency of the

conversion process, represented by the power factor, PF. The DC input voltage, V_i provided to the inverter affects the amount of current drawn.

Mar 7, 2024 · What kind of power inverter is the right one for the job? How do you install one? And how exactly does an inverter change the current from one form to another? Don't worry, as inverter technology isn't super ...

May 15, 2024 · A DC to AC inverter better known as an inverter is a device that changes direct current (DC) to alternating current (AC). AC electricity is the form of electricity we use at home ...

Oct 28, 2025 · To grasp how an inverter works, imagine a solar array or battery as a constant DC source. The inverter switches the current direction continuously with the help of electronic ...

Apr 9, 2025 · In modern heating, ventilation, and air conditioning (HVAC) units, a direct current (DC) inverter is motor control technology that gives the system more

Mar 7, 2024 · What kind of power inverter is the right one for the job? How do you install one? And how exactly does an inverter change the current from one form to another? Don't worry, ...

4 days ago · Inverter Current Formula: Inverter current is the electric current drawn by an inverter to supply power to connected loads. The current depends on the power output required by the ...

Apr 9, 2025 · In modern heating, ventilation, and air conditioning (HVAC) units, a direct current (DC) inverter is motor control technology that gives the system more

May 20, 2023 · The electrical circuits that transform Direct current (DC) input into Alternating current (AC) output are known as DC-to-AC Converters or Inverters. They are

used in power electronic applications where the power ...

May 28, 2024 · This article investigates the basic principles of inverters, different types of DC-to-AC conversion, and common applications for generating AC voltage in manufacturing.

May 15, 2024 · A DC to AC inverter better known as an inverter is a device that changes direct current (DC) to alternating current (AC). AC electricity is the form of electricity we use at home and office while DC electricity is the ...

Aug 9, 2024 · Inverters are essential for converting the direct current (DC) from sources like solar panels or batteries into alternating current (AC) used in household appliances.

What Does an Inverter Do and How Does It Work? In today's power-driven world, inverters have become essential components across homes, industries, and renewable energy systems. ...

May 20, 2023 · The electrical circuits that transform Direct current (DC) input into Alternating current (AC) output are known as DC-to-AC Converters or Inverters. They are used in power ...

Mar 6, 2025 · An easy-to-understand explanation of how an inverter converts DC (direct current) electricity to AC (alternating current).

May 28, 2024 · This article investigates the basic principles of inverters, different types of DC-to-AC conversion, and common applications for generating AC voltage in manufacturing.

Contact Us

For catalog requests, pricing, or partnerships, please visit:
<https://www.pdeozepv.pl>