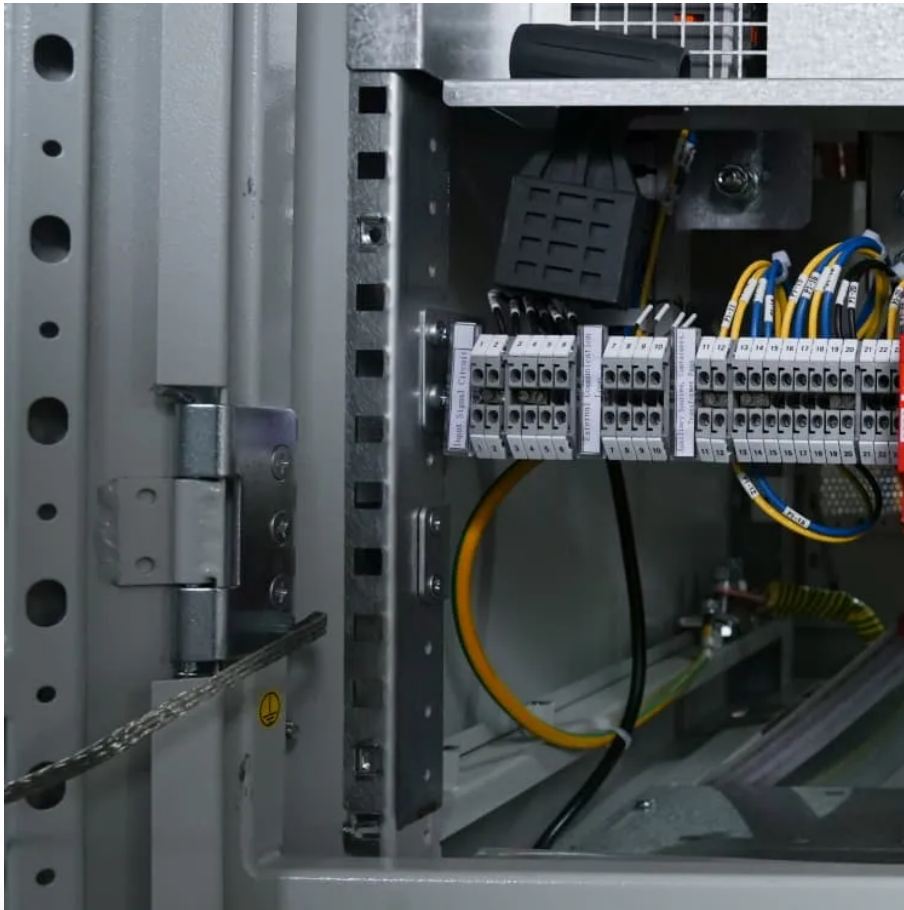


PDEOZE PowerContainer

Inverter DC terminal access voltage



Overview

What is the output voltage of an inverter?

It describes the output voltage of an inverter, which converts direct current (DC) from sources like batteries or solar panels into alternating current (AC). The output voltage of an inverter is determined by the DC input voltage and the modulation index.

When does a DC inverter start?

The inverter starts as soon as the DC bus voltage is present at a greater level than 10% of the AC maximum. Observe the controlled AC voltage waveform on the output. The frequency and the amplitude of the AC voltage is determined by the values on the powerSUITE page of the solution. If any changes are required, stop the inverter.

How does an inverter control a motor?

An inverter uses this feature to freely control the speed and torque of a motor. This type of control, in which the frequency and voltage are freely set, is called pulse width modulation, or PWM. The inverter first converts the input AC power to DC power and again creates AC power from the converted DC power using PWM control.

How does an inverter work?

The inverter first converts the input AC power to DC power and again creates AC power from the converted DC power using PWM control. The inverter outputs a pulsed voltage, and the pulses are smoothed by the motor coil so that a sine wave current flows to the motor to control the speed and torque of the motor.

What is a voltage source inverter?

Voltage source inverters (VSIs) are commonly used in uninterruptible power supplies (UPS) to generate a regulated AC voltage at the output. Control

design of such inverter is challenging because of the unknown nature of load that can be connected to the output of the inverter.

How do I set a voltage for an inverter?

Enter 60 Hz for frequency for the AC waveform. This will be the frequency of the inverter output. Under Inverter Power Stage Parameters, enter 110 VRMS for the output voltage. This will be the value that the AC output will regulate to. Type Ctrl+S to save the page. Right-click on the project name. Select Rebuild Project.

Inverter DC terminal access voltage

It describes the output voltage of an inverter, which converts direct current (DC) from sources like batteries or solar panels into alternating current (AC). The output voltage of an inverter is determined by the DC input voltage and the modulation index.

The inverter starts as soon as the DC bus voltage is present at a greater level than 10% of the AC maximum. Observe the controlled AC voltage waveform on the output. The frequency and the amplitude of the AC voltage is determined by the values on the powerSUITE page of the solution. If any changes are required, stop the inverter.

An inverter uses this feature to freely control the speed and torque of a motor. This type of control, in which the frequency and voltage are freely set, is called pulse width modulation, or PWM. The inverter first converts the input AC power to DC power and again creates AC power from the converted DC power using PWM control.

The inverter first converts the input AC power to DC power and again creates AC power from the converted DC power using PWM control. The inverter outputs a pulsed voltage, and the pulses are smoothed by the motor coil so that a sine wave current flows to the motor to control the speed and torque of the motor.

Voltage source inverters (VSIs) are commonly used in uninterruptible power supplies (UPS) to generate a regulated AC voltage at the output. Control design of such inverter is challenging because of the unknown nature of load that can be connected to the output of the inverter.

Enter 60 Hz for frequency for the AC waveform. This will be the frequency of the inverter output. Under Inverter Power Stage Parameters, enter 110 VRMS for the output voltage. This will be the value that the AC output will regulate to. Type Ctrl+S to save the page.

Right-click on the project name. Select Rebuild Project.

Oct 28, 2025 · Network Injection Equations for Rectifier and Inverters for the AC power flow solution For a given terminal AC voltage in per unit, these equations convert the DC quantities ...

Oct 28, 2025 · Network Injection Equations for Rectifier and Inverters for the AC power flow solution For a given terminal AC voltage in per unit, these equations convert the DC quantities into a real and reactive power ...

Feb 20, 2024 · Hitachi Industrial Equipment & Powering Inverters from DC It is possible to power inverters from a DC Power source, or to connect the DC Bus of multiple inverters together to ...

Nov 3, 2025 · The DC voltage to the inverter needs to be higher than the start-up voltage as specified on the datasheet for the corresponding inverter type. If they have a voltage (Figure ...

May 11, 2022 · Apart from isolated gate-drivers for IGBTs, the three-phase inverters include DC bus voltage sensing, inverter current sensing, IGBT protection (like over-temperature, ...

5 days ago · Inverter Voltage Formula: Inverter voltage (V_I) is an essential concept in electrical engineering, particularly in the design and operation of power electronics systems. It describes ...

May 11, 2022 · Description This reference design implements single-phase inverter (DC/AC) control using a C2000™ microcontroller (MCU). The design supports two modes of operation ...

When using a step-down DC-DC converter as an inverter, there are some limitations. The

voltage difference between the input and the negative output must be less than the step-down DC-DC converter's maximum operating ...

Apr 1, 2023 · In many applications, it is important for an inverter to be lightweight and of a relatively small size. This can be achieved by using a High-Frequency Inverter that involves an ...

Mar 27, 2016 · An inverter uses this feature to freely control the speed and torque of a motor. This type of control, in which the frequency and voltage are freely set, is called pulse width ...

Feb 9, 2006 · CMOS Inverter: DC Analysis Analyze DC Characteristics of CMOS Gates by studying an Inverter DC Analysis DC value of a signal in static conditions DC Analysis of ...

When using a step-down DC-DC converter as an inverter, there are some limitations. The voltage difference between the input and the negative output must be less than the step-down DC-DC ...

Contact Us

For catalog requests, pricing, or partnerships, please visit:
<https://www.pdeozepv.pl>