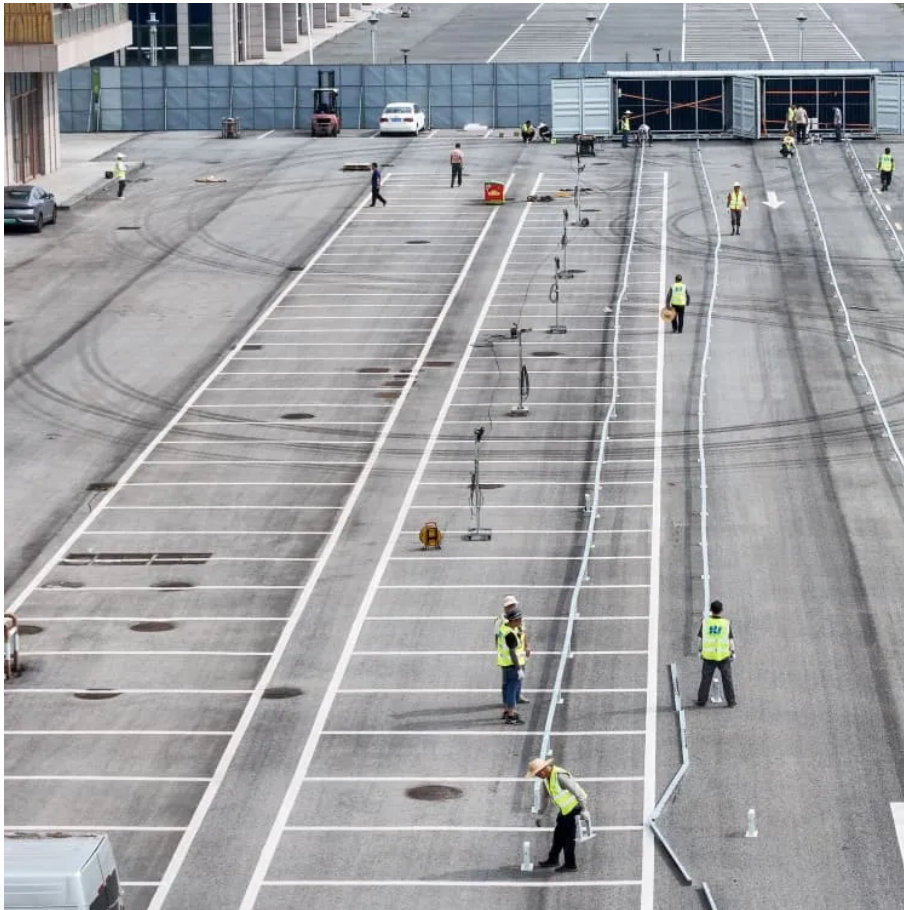


PDEOZE PowerContainer

How to check how many power supplies a base station has



Overview

What is a base station power supply?

This acts as the “blood supply” of the base station, ensuring uninterrupted power. It includes: AC distribution box: Distributes mains power and offers surge protection. Switch-mode power supply: Converts and stabilizes power while managing DC output. Battery banks: Serve as backup power to keep systems running during outages. 3.

How much power does a base station have?

Maximum base station power is limited to 38 dBm output power for Medium-Range base stations, 24 dBm output power for Local Area base stations, and to 20 dBm for Home base stations. This power is defined per antenna and carrier, except for home base stations, where the power over all antennas (up to four) is counted.

What are the components of a base station?

Power Supply: The power source provides the electrical energy to base station elements. It often features auxiliary power supply mechanisms that guarantee operation in case of lost or interrupted electricity, during blackouts. Baseband Processor: The baseband processor is responsible for the processing of the digital signals.

How many transceivers does a base station have?

It consist of three part elements: one or more transceivers, several antenna mounted on a tower or building, power system, and air conditioning equipment. A base station can have between 1 and 16 transceivers, depending on geography and the demand for service of an area.

What is a base station & a PV powering Unit?

The base station uses radio signals to connect devices to network as a part of traditional cellular telephone network and solar powering unit is used to power

it. The PV powering unit uses solar panels to generate electricity for base stations in areas with no access to grid or areas connected to unreliable grids.

What is the maximum base station Power?

Maximum base station power is limited to 24 dBm output power for Local Area base stations and to 20 dBm for Home base stations, counting the power over all antennas (up to four). There is no maximum base station power defined for Wide Area base stations.

How to check how many power supplies a base station has

This acts as the "blood supply" of the base station, ensuring uninterrupted power. It includes:

- AC distribution box: Distributes mains power and offers surge protection.
- Switch-mode power supply: Converts and stabilizes power while managing DC output.
- Battery banks: Serve as backup power to keep systems running during outages. 3.

Maximum base station power is limited to 38 dBm output power for Medium-Range base stations, 24 dBm output power for Local Area base stations, and to 20 dBm for Home base stations. This power is defined per antenna and carrier, except for home base stations, where the power over all antennas (up to four) is counted.

Power Supply: The power source provides the electrical energy to base station elements. It often features auxiliary power supply mechanisms that guarantee operation in case of lost or interrupted electricity, during blackouts. **Baseband Processor:** The baseband processor is responsible for the processing of the digital signals.

It consist of three part elements: one or more transceivers, several antenna mounted on a tower or building, power system, and air conditioning equipment. A base station can have between 1 and 16 transceivers, depending on geography and the demand for service of an area.

The base station uses radio signals to connect devices to network as a part of traditional cellular telephone network and solar powering unit is used to power it. The PV powering unit uses solar panels to generate electricity for base stations in areas with no access to grid or areas connected to unreliable grids.

Maximum base station power is limited to 24 dBm output power for Local Area base stations and to 20 dBm for Home base stations, counting the power over all antennas

(up to four). There is no maximum base station power defined for Wide Area base stations.

Using Keysight DC power supplies in base station subassembly, module and final test to maximize test throughput and minimize cost of test.

Nov 17, 2024 · Switch-Mode Power Supply: This critical component performs rectification, filtering, and voltage stabilization, converting AC power into DC power. DC Power Output: The processed DC power is supplied to main ...

May 25, 2025 · Building better power supplies for 5G base stations Authored by: Alessandro Pevere, and Francesco Di Domenico, both at Infineon Technologies

Nov 5, 2015 · Hello everyone, I use a Dell R610 with FreeBSD installed and I know it has 2 power supplies. However I would like to check that from a system point of view (maybe one power ...

Jul 23, 2025 · Power consumption: Thus, permanent power supply is needed for the operation of base stations; energy consumption required to operate these facilities contributes significantly to carbon emissions and ...

Base station power refers to the output power level of base stations, which is defined by specific maximum limits (24 dBm for Local Area base stations and 20 dBm for Home base stations) ...

Jul 23, 2025 · Power consumption: Thus, permanent power supply is needed for the operation of base stations; energy consumption required to operate these facilities contributes significantly ...

Oct 24, 2024 · For macro base stations, Cheng Wentao of Infineon gave some suggestions on the optimization of primary and secondary power supplies. "In terms of

primary power supply, we ...

Mar 2, 2020 · how to check power supply details for the models described in the scope. Scope FortiGate-100/101E and 200/201E series. Solution For units with multiple power supplies, the ...

Aug 14, 2025 · According to the power system of base station. We can actually calculate that how many circuits we need to monitoring and set a compatible model selection plan for metering ...

Nov 17, 2024 · Switch-Mode Power Supply: This critical component performs rectification, filtering, and voltage stabilization, converting AC power into DC power. DC Power Output: The ...

These tools simplify the task of selecting the right power management solutions for these devices and, thereby, provide an optimal power solution for 5G base stations components.

Contact Us

For catalog requests, pricing, or partnerships, please visit:
<https://www.pdeozepv.pl>