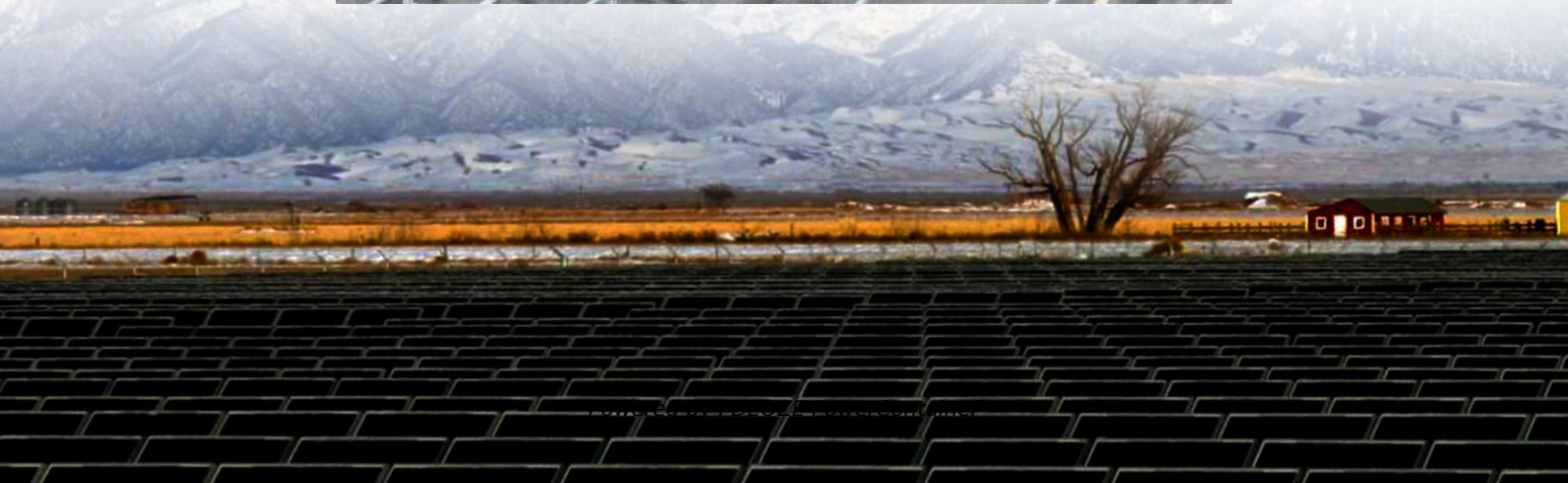
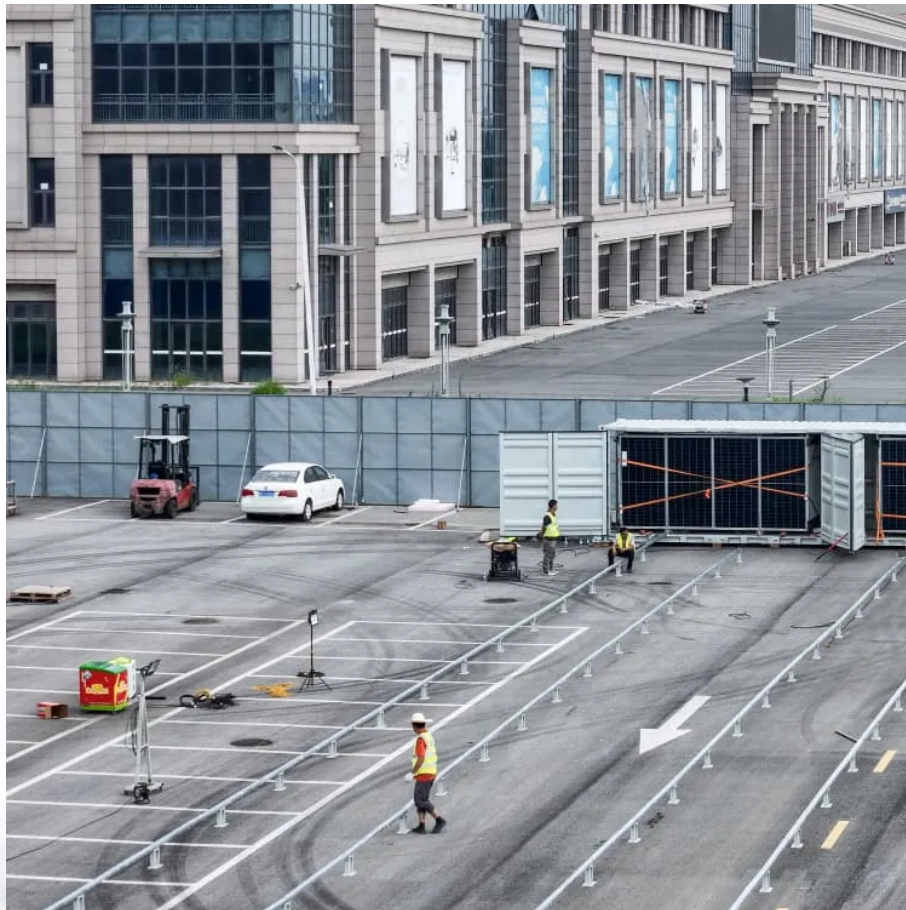


PDEOZE PowerContainer

How much current does a 2200 watt inverter draw when connected to 12v



Overview

To calculate the DC current draw from an inverter, use the following formula: Inverter Current = Power ÷ Voltage Where: If you're working with kilowatts (kW), convert it to watts before calculation: Inverter Current = $1000 \div 12 = 83.33$ Amps So, the inverter draws 83.33 amps from a 12V.

To calculate the DC current draw from an inverter, use the following formula: Inverter Current = Power ÷ Voltage Where: If you're working with kilowatts (kW), convert it to watts before calculation: Inverter Current = $1000 \div 12 = 83.33$ Amps So, the inverter draws 83.33 amps from a 12V.

How much current is drawn from a 12V or 24V battery when running a battery inverter?

Documented in this article are common questions relating to the inverter draw (inverter amp draw or inverter current draw) for 12v (or 24v) batteries. If you're looking for information relating to your 2000 watt.

The Inverter Current Calculator is a simple yet effective tool that helps users determine the current draw of an inverter based on its power rating and voltage. With just a few input values, users can calculate the current to properly size batteries, cables, and safety equipment. To use the.

The maximum current drawn by a 1500-watt inverter is influenced by the following factors: Maximum Amp Draw for 85%, 95% and 100% Inverter Efficiency A. 85% Efficiency Let us consider a 12 V battery bank where the lowest battery voltage before cut-off is 10 volts. The maximum current is = (1500.

In order to ensure that the capacity of your power inverter is sufficient to meet the required start up load, you must first determine the power consumption of the equipment or appliance you plan to operate. Power consumption is rated either in wattage or amperes, and information regarding the.

If I have a 12 V car battery and I connect it to a 3 kW 10 A 220 V AC inverter, how much would be the current draw?

250 A?

220V 10A is 2.2kW, not 3kW. Is it 2.2kW continuous, and 3kW peak?

Or is it marketing speak by someone who made up numbers that looked good on the box?

By clicking "Post Your.

Our AC amps to DC amps conversion calculator can help you convert electric currents from an alternating current (AC) to a direct current (DC). For this, you need a DC-to-AC power inverter that takes the DC voltage a battery provides and inverts it to AC voltage so that you can run an AC-powered. How much current does a 12 volt inverter draw?

Given that an inverter might only be 90% efficient, the input power could be as high as 3.333 kW, resulting in a current draw of 278 amps from a 12 volt battery. Additionally, the inverter may have a surge power rating of 4 kW, causing a surge current of up to 370 amps.

How many amps does a 3000W inverter draw from a 12V battery?

If you're working with kilowatts (kW), convert it to watts before calculation:
Inverter Current = $1000 \div 12 = 83.33$ Amps So, the inverter draws 83.33 amps from a 12V battery. Inverter Current = $3000 \div 24 = 125$ Amps So, a 3000W inverter on a 24V system pulls 125 amps from the battery.

What is inverter current?

Inverter current is the electric current drawn by an inverter to supply power to connected loads. The current depends on the power output required by the load, the input voltage to the inverter, and the power factor of the load. The inverter draws current from a DC source to produce AC power.

What is the maximum current drawn by a 1500 watt inverter?

The maximum current drawn by a 1500-watt inverter is influenced by the following factors: Maximum Amp Draw for 85%, 95% and 100% Inverter Efficiency A. 85% Efficiency Let us consider a 12 V battery bank where the lowest battery voltage before cut-off is 10 volts. The maximum current is.

How do you calculate dc current from an inverter?

To calculate the DC current draw from an inverter, use the following formula:
Inverter Current = Power ÷ Voltage
Where: If you're working with kilowatts (kW), convert it to watts before calculation:
Inverter Current = $1000 \div 12 = 83.33$ Amps
So, the inverter draws 83.33 amps from a 12V battery.
Inverter Current = $3000 \div 24 = 125$ Amps.

How does AC inverter power affect DC input voltage?

The AC inverter power, P_i required by the load determines how much current the inverter needs to draw from the DC source. This is influenced by the efficiency of the conversion process, represented by the power factor, PF. The DC input voltage, V_i provided to the inverter affects the amount of current drawn.

How much current does a 2200 watt inverter draw when connected

Given that an inverter might only be 90% efficient, the input power could be as high as 3.333 kW, resulting in a current draw of 278 amps from a 12 volt battery. Additionally, the inverter may have a surge power rating of 4 kW, causing a surge current of up to 370 amps.

If you're working with kilowatts (kW), convert it to watts before calculation: Inverter Current = $1000 \div 12 = 83.33$ Amps So, the inverter draws 83.33 amps from a 12V battery. Inverter Current = $3000 \div 24 = 125$ Amps So, a 3000W inverter on a 24V system pulls 125 amps from the battery.

Inverter current is the electric current drawn by an inverter to supply power to connected loads. The current depends on the power output required by the load, the input voltage to the inverter, and the power factor of the load. The inverter draws current from a DC source to produce AC power.

The maximum current drawn by a 1500-watt inverter is influenced by the following factors: Maximum Amp Draw for 85%, 95% and 100% Inverter Efficiency A. 85% Efficiency Let us consider a 12 V battery bank where the lowest battery voltage before cut-off is 10 volts. The maximum current is

To calculate the DC current draw from an inverter, use the following formula: Inverter Current = Power \div Voltage Where: If you're working with kilowatts (kW), convert it to watts before calculation: Inverter Current = $1000 \div 12 = 83.33$ Amps So, the inverter draws 83.33 amps from a 12V battery. Inverter Current = $3000 \div 24 = 125$ Amps

The AC inverter power, P_i required by the load determines how much current the inverter needs to draw from the DC source. This is influenced by the efficiency of the

conversion process, represented by the power factor, PF. The DC input voltage, V_i provided to the inverter affects the amount of current drawn.

If I have a 12 V car battery and I connect it to a 3 kW 10 A 220 V AC inverter, how much would be the current draw? 250 A?

Our calculator will help you determine the DC amperage as it passes through a power inverter and provides the wattage rating you are pulling so you can properly size the power inverter you need.

Understanding the current draw of an inverter at different powers is an important part of designing and selecting a power system. This article provides current calculations for ...

How much current is drawn from a 12V or 24V battery when running a battery inverter? Documented in this article are common questions relating to the inverter draw (inverter amp ...

Our calculator will help you determine the DC amperage as it passes through a power inverter and provides the wattage rating you are pulling so you can properly size the ...

Understanding the current draw of an inverter at different powers is an important part of designing and selecting a power system. This article provides current calculations for 300W to 5000W inverters at 12V, ...

Power consumption is rated either in wattage or amperes, and information regarding the required "watts" or "amps" generally is stamped or printed on most appliances and equipment. If this ...

Calculating the current draw of an inverter is essential in designing and troubleshooting electrical and electronic systems. This process ensures compatibility with ...

Power consumption is rated either in wattage or amperes, and information regarding the required "watts" or "amps" generally is stamped or printed on most appliances and equipment. If this information is not indicated on the ...

Click "Calculate" to find out the current the inverter will draw from the battery or DC power source. This calculated current is essential for battery selection, cable sizing, and protecting your ...

Inverter current is the electric current drawn by an inverter to supply power to connected loads. The current depends on the power output required by the load, the input voltage to the ...

Inverters with a greater DC-to-AC conversion efficiency (90-95%) draw fewer amps, whereas inverters with a lower efficiency (70-80%) draw more current. Note: The results may vary due to various factors ...

Inverters with a greater DC-to-AC conversion efficiency (90-95%) draw fewer amps, whereas inverters with a lower efficiency (70-80%) draw more current. Note: The results ...

It introduces an inverter amp draw calculator to simplify this process. The article explains how to calculate the amp draw based on the size of the inverter and provides a list of estimated ...

It introduces an inverter amp draw calculator to simplify this process. The article explains how to calculate the amp draw based on the size of the inverter and provides a list of estimated values for different inverter sizes.

Contact Us

For catalog requests, pricing, or partnerships, please visit:
<https://www.pdeozepv.pl>