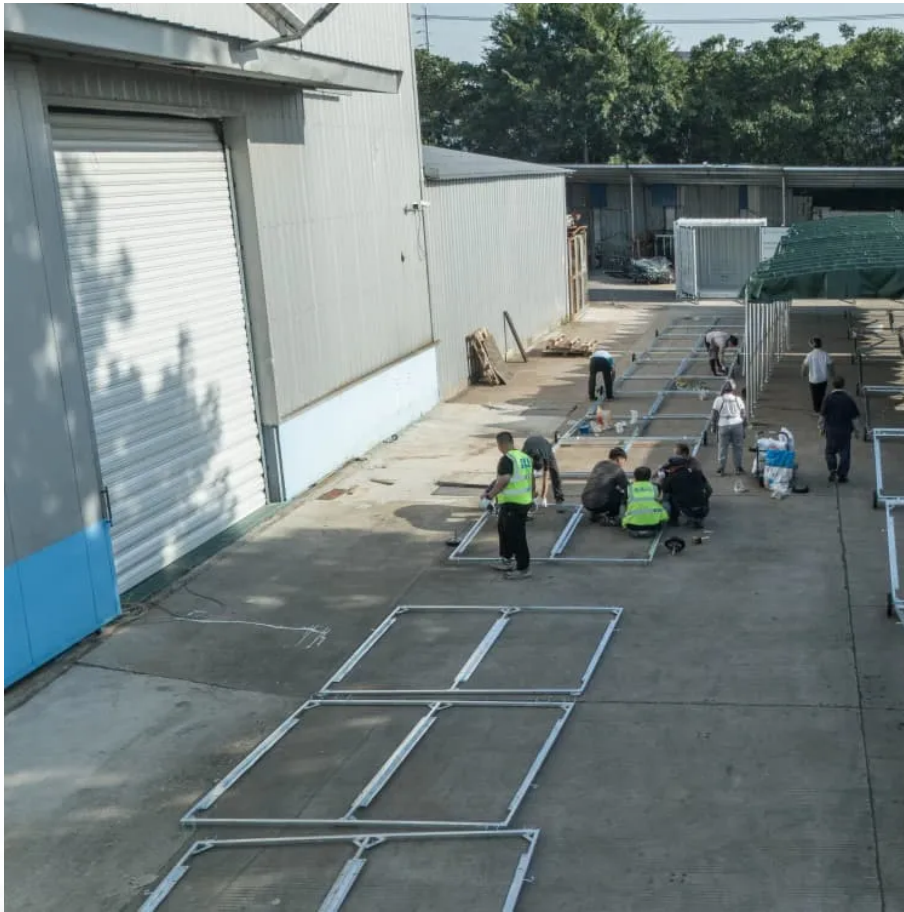


## PDEOZE PowerContainer

# How much V does the base station power module output



## Overview

---

How much power does a base station have?

Maximum base station power is limited to 38 dBm output power for Medium-Range base stations, 24 dBm output power for Local Area base stations, and to 20 dBm for Home base stations. This power is defined per antenna and carrier, except for home base stations, where the power over all antennas (up to four) is counted.

What is base station Power?

Base station power refers to the output power level of base stations, which is defined by specific maximum limits (24 dBm for Local Area base stations and 20 dBm for Home base stations) and includes tolerances for deviation from declared power levels, as well as specifications for total power control dynamic range. How useful is this definition?

.

What is a base station & a PV powering Unit?

The base station uses radio signals to connect devices to network as a part of traditional cellular telephone network and solar powering unit is used to power it. The PV powering unit uses solar panels to generate electricity for base stations in areas with no access to grid or areas connected to unreliable grids.

What is the maximum output power of a base station?

In extreme conditions, the base station maximum output power,  $P_{max,c}$ , shall remain within +2.5 dB and -2.5 dB of the rated output power,  $P_{rated,c}$ , declared by the manufacturer. In certain regions, the minimum requirement for normal conditions may apply also for some conditions outside the range of conditions defined as normal.

How much power does a cellular base station use?

A cellular base station can use anywhere from 1 to 5 kW power per hour depending upon the number of transceivers attached to the base station, the age of cell towers, and energy needed for air conditioning. Cellular base stations use power without any interruption and also needs maintenance.

How does a photovoltaic base station work?

Solar-powered base station. The photovoltaic array converts sunlight into 48 V DC to power communication equipment of the base station. The DC output of photovoltaic module is also converted to 110/220 V AC using an inverter for powering air conditioning of the base station.

## How much V does the base station power module output

---

Maximum base station power is limited to 38 dBm output power for Medium-Range base stations, 24 dBm output power for Local Area base stations, and to 20 dBm for Home base stations. This power is defined per antenna and carrier, except for home base stations, where the power over all antennas (up to four) is counted.

Base station power refers to the output power level of base stations, which is defined by specific maximum limits (24 dBm for Local Area base stations and 20 dBm for Home base stations) and includes tolerances for deviation from declared power levels, as well as specifications for total power control dynamic range. How useful is this definition?

The base station uses radio signals to connect devices to network as a part of traditional cellular telephone network and solar powering unit is used to power it. The PV powering unit uses solar panels to generate electricity for base stations in areas with no access to grid or areas connected to unreliable grids.

In extreme conditions, the base station maximum output power,  $P_{max,c}$ , shall remain within +2.5 dB and -2.5 dB of the rated output power,  $P_{rated,c}$ , declared by the manufacturer. In certain regions, the minimum requirement for normal conditions may apply also for some conditions outside the range of conditions defined as normal.

A cellular base station can use anywhere from 1 to 5 kW power per hour depending upon the number of transceivers attached to the base station, the age of cell towers, and energy needed for air conditioning. Cellular base stations use power without any interruption and also needs maintenance.

Solar-powered base station. The photovoltaic array converts sunlight into 48 V DC to power communication equipment of the base station. The DC output of photovoltaic

module is also converted to 110/220 V AC using an inverter for powering air conditioning of the base station.

Nov 17, 2024 · Switch-Mode Power Supply: This critical component performs rectification, filtering, and voltage stabilization, converting AC power into DC power. DC Power Output: The ...

Nov 17, 2024 · Switch-Mode Power Supply: This critical component performs rectification, filtering, and voltage stabilization, converting AC power into DC power. DC Power Output: The processed DC power is supplied to main ...

Sep 17, 2019 · To understand this, we need to look closer at the base station power consumption characteristics (Figure 3). The model shows that there is significant energy consumption in the ...

Aug 20, 2021 · Discover power module solutions for 5G infrastructure delivering high power density, efficiency, and reliability for base stations and small cell deployments.

May 21, 2025 · Discover NextG Power's 5G micro base station power solutions! Our IP65-rated 2000W/3000W modules and 48V 20Ah/50Ah LFP batteries ensure reliable connectivity.

Base station power refers to the output power level of base stations, which is defined by specific maximum limits (24 dBm for Local Area base stations and 20 dBm for Home base stations) ...

Jul 29, 2024 · Power modules step up or down voltage levels in telecom, especially in power base stations, routers, and network switches. Industrial Applications: Power modules are perfectly ...

Additionally, these 5G cells will also include more integrated antennas to apply the

massive multiple input, multiple output (MIMO) techniques for reliable connections. As a result, a ...

May 3, 2021 · Base station RF output power varies widely from 'femto' cells operating at milliwatt levels to 'small' cells typically up to 10W, to a little over 100W for the largest 5G MIMO (Multiple Input Multiple Output) array.

Base Station Power Consumption Energy Saving Features of 5G New Radio How Much Energy Can We Save with Nr Sleep Modes? Impact on Energy Efficiency and Performance in A Super Dense Urban Scenario Further Reading Today we see that a major part of energy consumption in mobile networks comes from the radio base station sites and that the consumption is stable. We can also see that even in densely deployed networks, as in city centers, the network traffic load can fluctuate very much during the day, with significant periods of almost no traffic in the base sta See more on ericsson analog

Additionally, these 5G cells will also include more integrated antennas to apply the massive multiple input, multiple output (MIMO) techniques for reliable connections. As a result, a ...

Aug 20, 2021 · Discover power module solutions for 5G infrastructure delivering high power density, efficiency, and reliability for base stations and small cell deployments.

Output power,  $P_{out}$ , of the base station is the mean power of one carrier delivered to a load with resistance equal to the nominal load impedance of the transmitter. Rated total output power of ...

Apr 1, 2023 · Small cells are smaller and cheaper than a cell tower and can be installed in a variety of areas, bringing more base stations closer to users. A large number of base stations ...

May 3, 2021 · Base station RF output power varies widely from 'femto' cells operating at milliwatt levels to 'small' cells typically up to 10W, to a little over 100W for the largest

5G MIMO ...

## Contact Us

---

For catalog requests, pricing, or partnerships, please visit:  
<https://www.pdeozepv.pl>