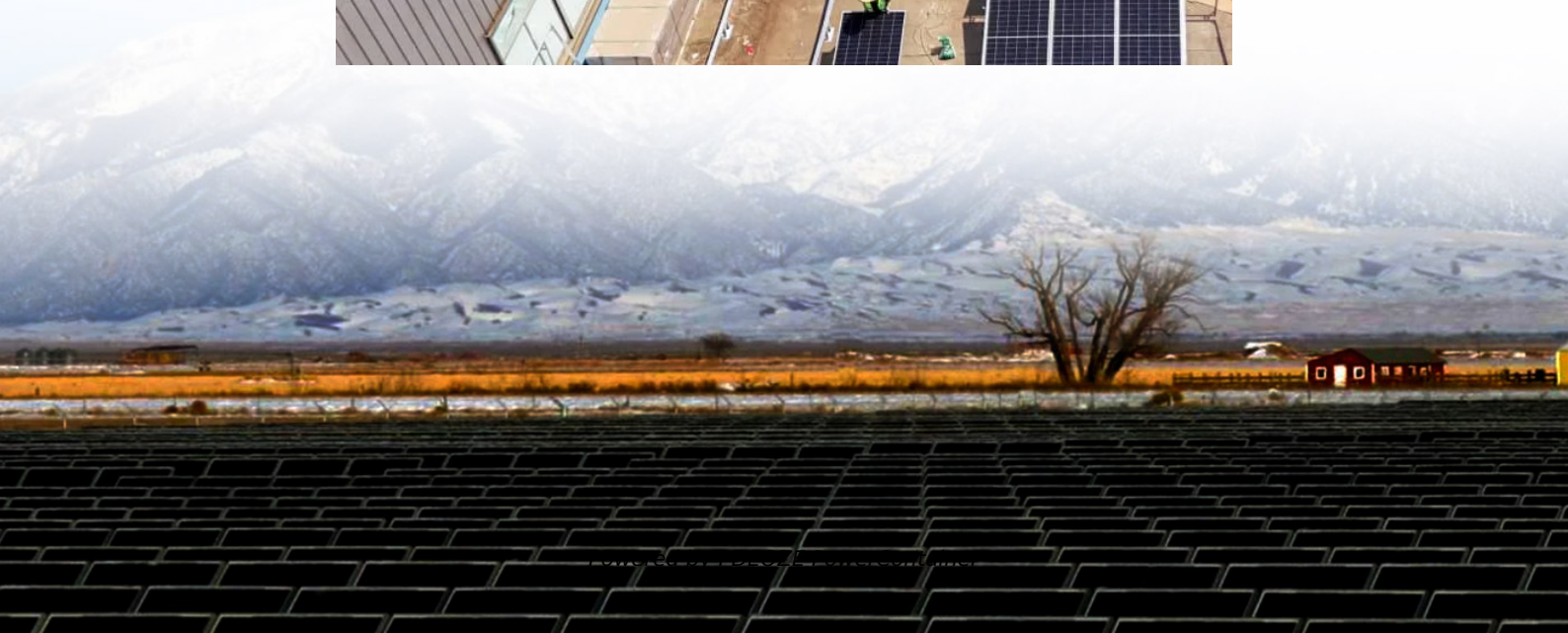


PDEOZE PowerContainer

How big should a lithium battery inverter be



How big should a lithium battery inverter be

Additional Resources How to Size a Home Power Inverter - SRNE Solar Inverter Basics Explained - This comprehensive guide empowers you to select the right ...

Lithium-ion batteries tolerate higher discharge rates (up to 1C) compared to lead-acid (0.5C). A 100Ah LiFePO4 battery can safely power a 1200W inverter, while lead-acid should cap at 600W.

Additional Resources How to Size a Home Power Inverter - SRNE Solar Inverter Basics Explained - This comprehensive guide empowers you to select the right ...

We have created a comprehensive inverter size chart to help you select the correct inverter to power your appliances.

When determining the appropriate inverter size for a 200Ah lithium battery, several key factors must be considered, including the battery's voltage, the total load you plan to power, and the efficiency of ...

In this article, we'll guide you through the key considerations for sizing your battery storage system, including your inverter. Remember, batteries don't generate power; they store it.

You can run an inverter rated between 1500W and 2400W off a 200Ah lithium battery depending on voltage and usage. Typically, a 12V 200Ah battery supports up to about ...

We have created a comprehensive inverter size chart to help you select the correct inverter to power your appliances.

For a balanced system, the inverter size should ideally be within 20% of the battery bank capacity. This ensures efficient operation and allows for fluctuations in power demand.

To recharge your battery from time to time you would need the right size solar panel to do the job! Read the below article to find out the suitable solar panel size for your battery bank

Calculate Battery Size for Inverter Calculator helps you determine the optimal battery capacity needed to support your inverter system.

When determining the appropriate inverter size for a 200Ah lithium battery, several key factors must be considered, including the battery's voltage, the total load you plan to ...

When setting up an off-grid, solar, RV, or backup power system, one of the most critical decisions you'll make is choosing the best inverter size for your 200Ah lithium battery. ...

You can run an inverter rated between 1500W and 2400W off a 200Ah lithium battery depending on voltage and usage. Typically, a 12V 200Ah battery supports up to about 2400W, while higher voltage ...

Contact Us

For catalog requests, pricing, or partnerships, please visit:
<https://www.pdeozepv.pl>