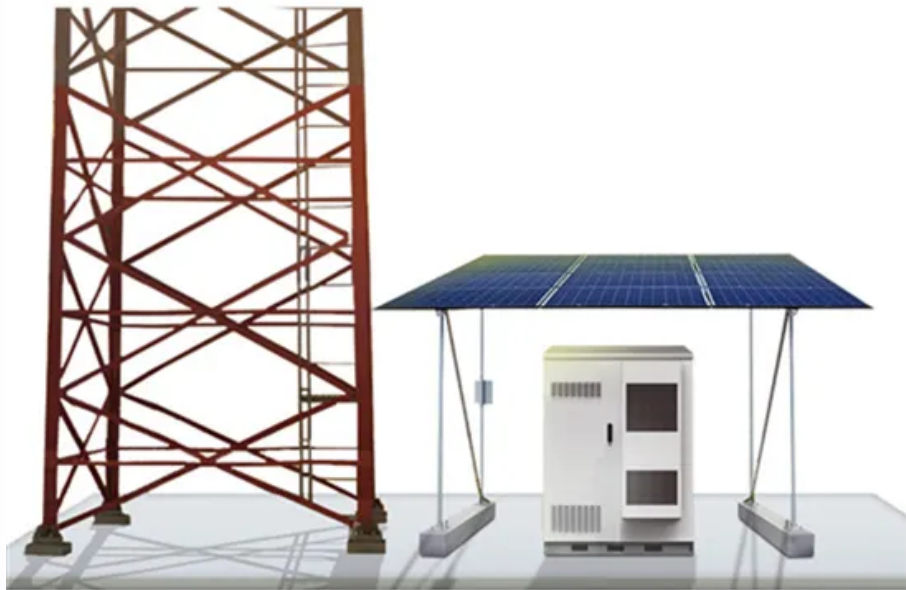


PDEOZE PowerContainer

How big a solar panel does a 60w water pump inverter require



Overview

To ensure optimal performance of your water pump, you need solar panels that match the wattage requirements of your pump. Typically, 100 to 375-watt panels are used, depending on the pump's specifications and whether it's single-phase or three-phase.

To ensure optimal performance of your water pump, you need solar panels that match the wattage requirements of your pump. Typically, 100 to 375-watt panels are used, depending on the pump's specifications and whether it's single-phase or three-phase.

To run a water pump on solar, multiply the pump's power by 1.5 to calculate the total solar panel wattage needed. For example, a 1000W pump requires at least 1500W of solar panels. Use solar panel specs (VOC, VMP, power) to configure series and parallel connections, based on whether your pump is.

The power of the solar photovoltaic panel array should be recommended at 1.3-1.5 times or greater than the power of the water pump. Additionally, the voltage of the solar photovoltaic panel array must match the voltage range required by the water pump. Example: Based on the pump models we.

The size of the solar panel will vary depending on the pump that best fits your needs. The number of solar panels will depend on the wattage that a particular pump will need to operate, the phase type of the pump, and the age of the pump. You need to ensure that there is sufficient wattage from the.

Determining the appropriate size of a solar panel for a solar surface water pump is a crucial step in ensuring efficient and reliable water pumping. As a trusted solar surface water pump supplier, we understand the significance of getting this right. In this blog, we'll delve into the factors that.

sizing a solar water pump is crucial for efficient water supply in off-grid or environmentally friendly systems. Our solar water pump sizing calculator streamlines this assessment. To gain insights into related calculations, such as solar panel voltage, link it with our solar panel voltage.

To ensure optimal performance of your water pump, you need solar panels that match the wattage requirements of your pump. Typically, 100 to 375-watt panels are used, depending on the pump's specifications and whether it's single-phase or three-phase. What size solar panel is needed to operate a. How much wattage does a solar water pump need?

Let's say you want to pump water from a depth of 50 feet at a rate of 5 GPM using a 12V pump that is 70% efficient. The region receives an average of 6 hours of sunlight per day, and you want to use a 12V solar panel and battery. Using the Solar Water Pump Sizing Calculator, the minimum solar panel wattage required is calculated as follows:.

What type of solar panel do I need for my water pump?

For water pumps, monocrystalline and polycrystalline panels are generally recommended due to their higher efficiency and reliability. The power requirement of your water pump is one of the most critical factors in determining the type of solar panel you need. The power requirement is usually measured in watts (W) and depends on factors such as:.

How many solar panels do I Need?

The size of the solar panel will vary depending on the pump that best fits your needs. The number of solar panels will depend on the wattage that a particular pump will need to operate, the phase type of the pump, and the age of the pump.

What is a solar water pump sizing calculator?

The Solar Water Pump Sizing Calculator is an essential tool for individuals who rely on solar power to pump water. By providing the required input data, users can accurately calculate the minimum solar panel wattage and battery capacity required to meet their water pumping needs.

What is a solar water pump system?

A solar water pump system typically consists of the following components:
Solar Panels: These convert sunlight into electricity. Controller: It regulates the power from the solar panels to the pump. Pump: This is the device that moves water from the source (well, river, or reservoir) to the desired location.

What angle should a solar water pump be installed?

Tilt Angle: The angle at which the solar panels are installed can significantly affect their efficiency. The panels should be tilted to capture the maximum amount of sunlight throughout the year, typically at an angle equal to the latitude of your location. Solar water pump systems operate at different voltages, such as 12V, 24V, or 48V.

How big a solar panel does a 60w water pump inverter require

Let's say you want to pump water from a depth of 50 feet at a rate of 5 GPM using a 12V pump that is 70% efficient. The region receives an average of 6 hours of sunlight per day, and you want to use a 12V solar panel and battery. Using the Solar Water Pump Sizing Calculator, the minimum solar panel wattage required is calculated as follows:

For water pumps, monocrystalline and polycrystalline panels are generally recommended due to their higher efficiency and reliability. The power requirement of your water pump is one of the most critical factors in determining the type of solar panel you need. The power requirement is usually measured in watts (W) and depends on factors such as:

The size of the solar panel will vary depending on the pump that best fits your needs. The number of solar panels will depend on the wattage that a particular pump will need to operate, the phase type of the pump, and the age of the pump.

The Solar Water Pump Sizing Calculator is an essential tool for individuals who rely on solar power to pump water. By providing the required input data, users can accurately calculate the minimum solar panel wattage and battery capacity required to meet their water pumping needs.

A solar water pump system typically consists of the following components: **Solar Panels:** These convert sunlight into electricity. **Controller:** It regulates the power from the solar panels to the pump. **Pump:** This is the device that moves water from the source (well, river, or reservoir) to the desired location.

Tilt Angle: The angle at which the solar panels are installed can significantly affect their efficiency. The panels should be tilted to capture the maximum amount of sunlight

throughout the year, typically at an angle equal to the latitude of your location. Solar water pump systems operate at different voltages, such as 12V, 24V, or 48V.

Typically, a well pump consumes between 1,000 to 2,000 watts. For efficient operation, a solar panel system producing at least 4,000 watts (or 4 kW) is recommended, ...

Example for a Deep Well: To run a powerful 1 HP well pump, you might need an array of 1,500 watts (1.5 kW) of solar panels. Stop guessing. Answer a few simple questions ...

To run a water pump on solar, multiply the pump's power by 1.5 to calculate the total solar panel wattage needed. For example, a 1000W pump requires at least 1500W of solar panels.

How to Use The Solar Water Pump Sizing Calculator
Instructions For Utilizing The Calculator
Formula
Illustrative Examples
Illustrative Table Example
The Solar Water Pump Sizing Calculator is a tool designed to calculate the solar panel and battery requirements for a water pump. This calculator is particularly useful for individuals who rely on solar power to pump water for irrigation, livestock, or other purposes. By providing the required input data, users can determine the appropriate solar p See more on calculatorpack energybandgdansk.pl

To ensure optimal performance of your water pump, you need solar panels that match the wattage requirements of your pump. Typically, 100 to 375-watt panels are used, depending on ...

To determine the power requirement of your pump, check the manufacturer's specifications. These details are usually provided in the product manual or on the pump's label. Make sure to ...

The size of the solar panel will vary depending on the pump that best fits your needs. The number of solar panels will depend on the wattage that a particular pump will need to operate, the ...

Example for a Deep Well: To run a powerful 1 HP well pump, you might need an array of 1,500 watts (1.5 kW) of solar panels. Stop guessing. Answer a few simple questions about your needs, and our tool ...

The power of the solar photovoltaic panel array should be recommended at 1.3-1.5 times or greater than the power of the water pump. Additionally, the voltage of the solar ...

By following these steps, you can size a solar pump inverter that meets your specific water pumping needs and ensures reliable and efficient operation of your solar pump system.

To run a water pump on solar, multiply the pump's power by 1.5 to calculate the total solar panel wattage needed. For example, a 1000W pump requires at least 1500W of ...

To ensure optimal performance of your water pump, you need solar panels that match the wattage requirements of your pump. Typically, 100 to 375-watt panels are used, depending on the pump's specifications and whether it's ...

The Solar Water Pump Sizing Calculator is a tool designed to calculate the solar panel and battery requirements for a water pump. This calculator is particularly useful for individuals who ...

The power of the solar photovoltaic panel array should be recommended at 1.3-1.5 times or greater than the power of the water pump. Additionally, the voltage of the solar ...

To determine the power requirement of your pump, check the manufacturer's specifications. These details are usually provided in the product manual or on the pump's label. Make sure to note the maximum power consumption, as ...

To ensure optimal performance of your water pump, you need solar panels that match the wattage requirements of your pump. Typically, 100 to 375-watt panels are used, depending on ...

To ensure optimal performance of your water pump, you need solar panels that match the wattage requirements of your pump. Typically, 100 to 375-watt panels are used, depending on ...

Contact Us

For catalog requests, pricing, or partnerships, please visit:
<https://www.pdeozepv.pl>