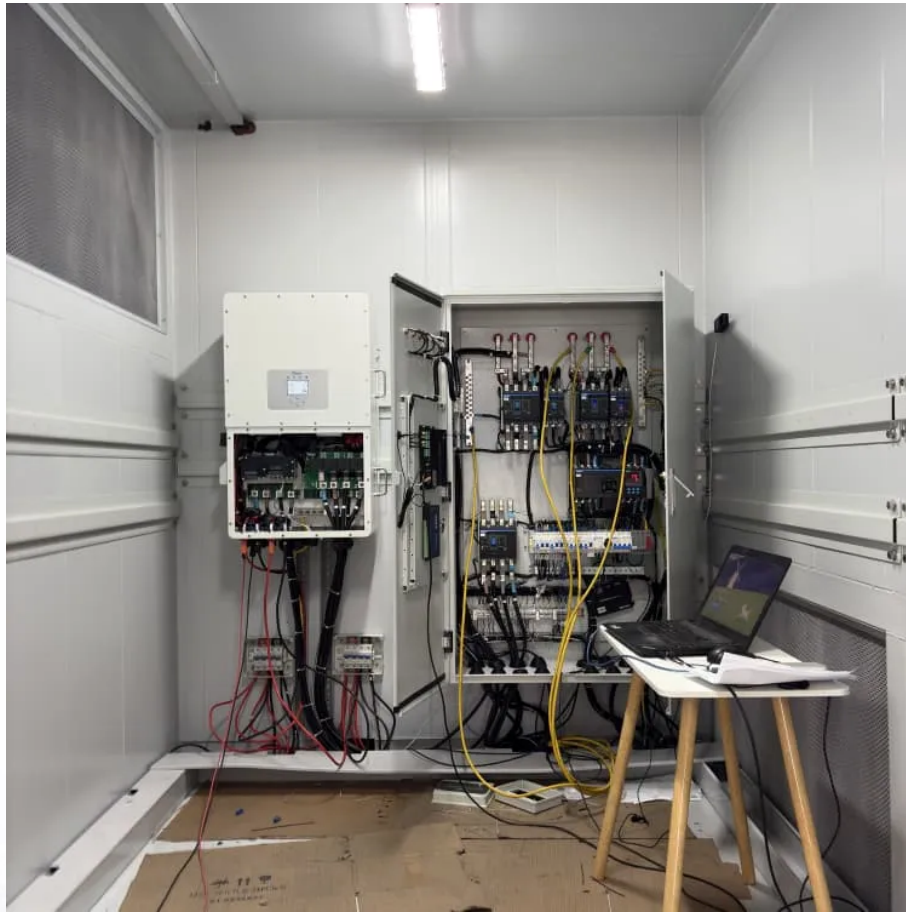


PDEOZE PowerContainer

Equipment room battery cabinet assembly site



Overview

What is a battery cabinet / rack?

EverExceed designs customized battery cabinets / racks for individual batteries. The cabinet or racking system can be specified to accommodate any battery cell. From flooded to sealed, from lead acid to nickel cadmium and from vertical to horizontal all kinds of battery cabinet / rack can be designed flexibly to save the space in battery room.

How should a battery room be located?

This will reduce the cost and exposure of the dc distribution system. The battery room shall be located in a way that provides access for lifting equipment to be used during initial installation and future maintenance operations. The location shall be as free from vibration as practical.

What are the parts of a battery storage cabinet?

Let's look at the most common parts: Frame - it forms the outer structure. In most cases, you will mount or weld various panels on the structure. The battery storage cabinet may have top, bottom, and side panels. Door - allows you to access the battery box enclosure. You can use hinges to attach the door to the enclosure structure.

What are battery enclosure cabinets?

Battery enclosure cabinets play an integral role in modern industries. From aerospace, military, automotive, medical to energy industries depend heavily on these accessories. They use enclosures in: In short, you can use these accessories anywhere and in any application.

How to install a battery storage cabinet?

Mounting mechanism - they vary depending on whether the battery storage cabinet is a pole mount, wall mount, or floor mount. The mechanism allows you to install the battery box enclosure appropriately. Racks - these systems

support batteries in the enclosure. Ideally, the battery rack should be strong.

How do you design a safe battery room?

A well-designed layout is the backbone of a safe battery room. Begin by allocating sufficient space for each battery system, allowing for clear access during installation, charging, or maintenance. Traction and semi-traction batteries, which are handled frequently, should be positioned near entry points or charging stations for convenience.

Equipment room battery cabinet assembly site

EverExceed designs customized battery cabinets / racks for individual batteries. The cabinet or racking system can be specified to accommodate any battery cell. From flooded to sealed, from lead acid to nickel cadmium and from vertical to horizontal all kinds of battery cabinet / rack can be designed flexibly to save the space in battery room.

This will reduce the cost and exposure of the dc distribution system. The battery room shall be located in a way that provides access for lifting equipment to be used during initial installation and future maintenance operations. The location shall be as free from vibration as practical.

Let's look at the most common parts: Frame - it forms the outer structure. In most cases, you will mount or weld various panels on the structure. The battery storage cabinet may have top, bottom, and side panels. Door - allows you to access the battery box enclosure. You can use hinges to attach the door to the enclosure structure.

Battery enclosure cabinets play an integral role in modern industries. From aerospace, military, automotive, medical to energy industries depend heavily on these accessories. They use enclosures in: In short, you can use these accessories anywhere and in any application.

Mounting mechanism - they vary depending on whether the battery storage cabinet is a pole mount, wall mount, or floor mount. The mechanism allows you to install the battery box enclosure appropriately. Racks - these systems support batteries in the enclosure. Ideally, the battery rack should be strong.

A well-designed layout is the backbone of a safe battery room. Begin by allocating sufficient space for each battery system, allowing for clear access during installation,

charging, or maintenance. Traction and semi-traction batteries, which are handled frequently, should be positioned near entry points or charging stations for convenience.

Everyone wants a safe, durable, high quality and secure battery enclosure. However, finding the right information about these battery boxes or cabinet is always a ...

The battery room shall be located in a way that provides access for lifting equipment to be used during initial installation and future maintenance operations. The location shall be as free from ...

Industrial battery rooms require careful design to ensure safety, compliance, and operational efficiency. This article covers key design considerations and relevant standards.

Build a safe, efficient battery room for lead-acid, lithium-ion & EV batteries. Learn layout, ventilation & charging tips to maximise safety & performance.

Battery Room References
Battery Room Design Requirements
Location of Battery Room
Layout of Battery Room
Battery Room Architectural Requirements
Battery Room Ventilation & HVAC
Battery Room Safety Requirements
Battery Installations in Unit Substations and Equipment Rooms
Battery Room storage Cabinet
The battery shall be located as close as practical to the load. This will reduce the cost and exposure of the dc distribution system.
The battery room shall be located in a way that provides access for lifting equipment to be used during initial installation and future maintenance operations.
The location shall be as free from vibration as practical. The battery shall be located as close as practical to the load. This will reduce the cost and exposure of the dc distribution system.
The battery room shall be located in a way that provides access for lifting equipment to be used during initial installation and future maintenance operations.
The location shall be as free from vibration as practical.
The location shall be selected so as to protect the battery from flooding and other natural phenomena, and from fire and explosions in the operating areas.
See more
New content will be added above the current area of focus upon selection
See more on paktechpoint

We can supply customized lead acid battery rack and cabinet system for solar, UPS, Telecom, Data center etc. EverExceed designs customized battery cabinets / racks for individual batteries. The cabinet or racking ...

We can supply customized lead acid battery rack and cabinet system for solar, UPS, Telecom, Data center etc. EverExceed designs customized battery cabinets / racks for individual ...

Imagine investing millions in cutting-edge battery technology, only to face recalls due to preventable contamination issues. This is why industry leaders like Tesla and ...

It is a requirement to have all the documentation in place prior to authorized personnel entering a battery room to perform a specific work task on a battery system under ...

Tips on how to design a custom enclosure to house and protect your battery system.

The system must be installed on a level floor suitable for computer or electronic equipment, and able to support the weight of the battery cabinet(s) and UPS. Each battery cabinet can weigh ...

icable standards such as UL 4900: Micromobility Charging Equipment. Note: UL 1487 contains a clause that requires charging equipment, devices, and/or certain component parts of the ...

Build a safe, efficient battery room for lead-acid, lithium-ion & EV batteries. Learn layout, ventilation & charging tips to maximise safety & performance.

Contact Us

For catalog requests, pricing, or partnerships, please visit:
<https://www.pdeozepv.pl>