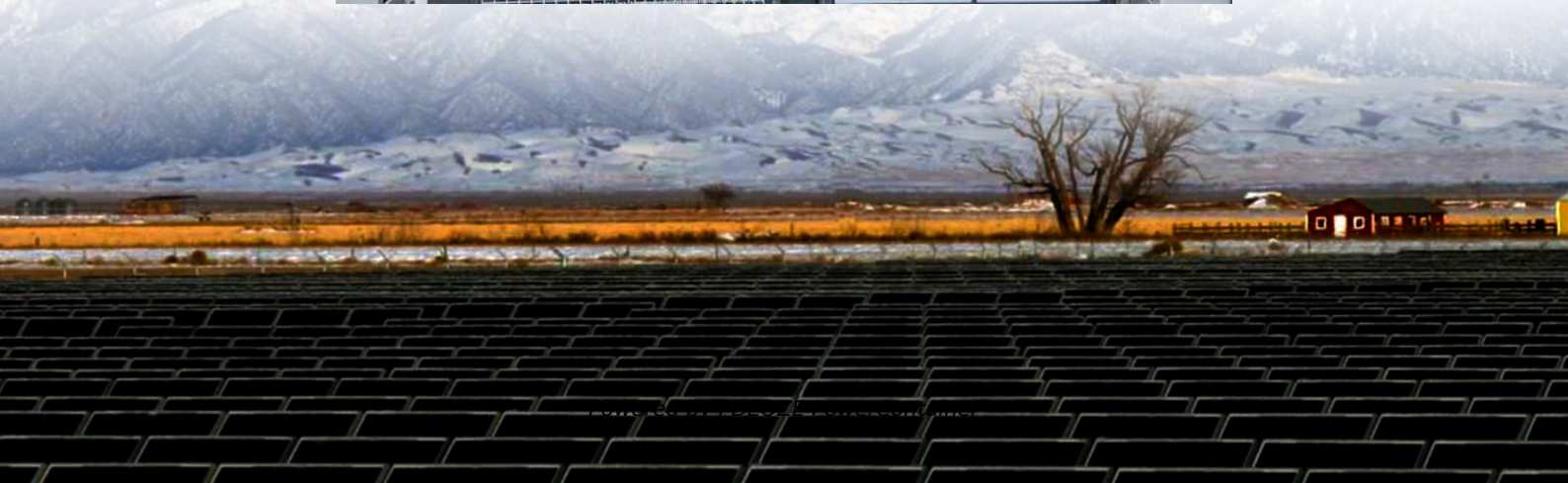
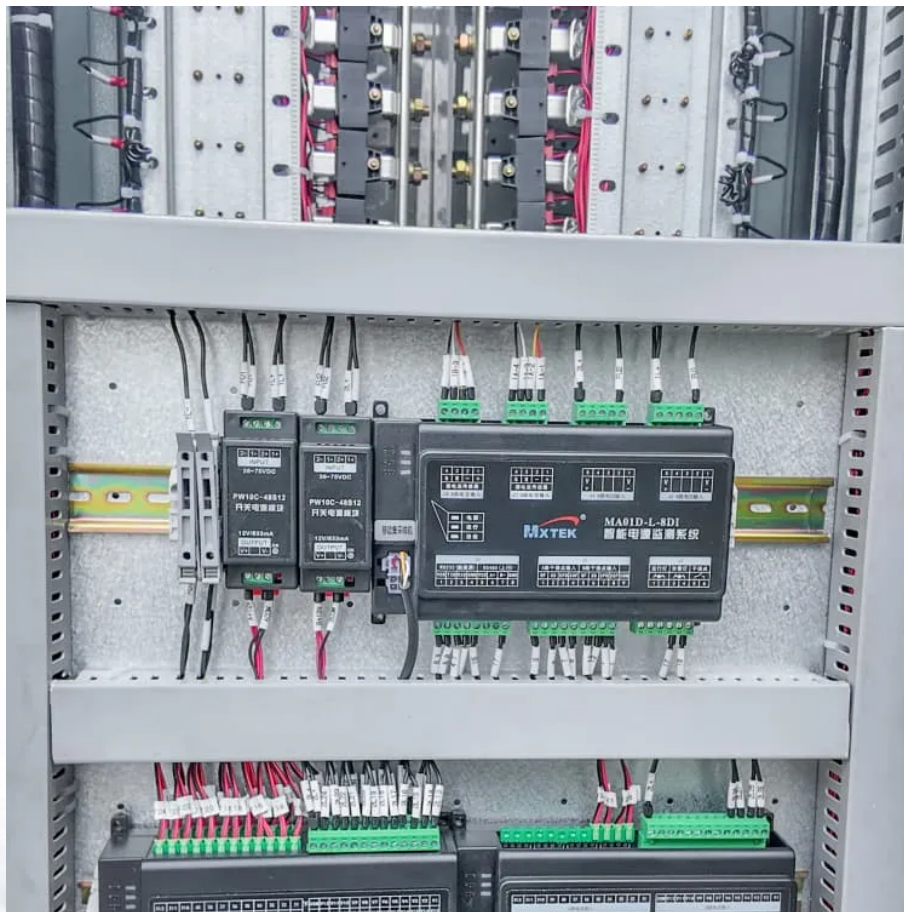


PDEOZE PowerContainer

Energy storage containers to reduce peak loads and fill valleys



Overview

Valley filling involves utilizing energy storage to capture low-cost electricity during off-peak hours and using it during periods of higher demand. This strategy optimizes energy costs by taking advantage of time-of-use (TOU) pricing models where electricity prices vary throughout the day. Do energy storage systems achieve the expected peak-shaving and valley-filling effect?

Abstract: In order to make the energy storage system achieve the expected peak-shaving and valley-filling effect, an energy-storage peak-shaving scheduling strategy considering the improvement goal of peak-valley difference is proposed.

Does constant power control improve peak shaving and valley filling?

Finally, taking the actual load data of a certain area as an example, the advantages and disadvantages of this strategy and the constant power control strategy are compared through simulation, and it is verified that this strategy has a better effect of peak shaving and valley filling. Conferences > 2021 11th International Confe.

How is peak-shaving and valley-filling calculated?

First, according to the load curve in the dispatch day, the baseline of peak-shaving and valley-filling during peak-shaving and valley filling is calculated under the constraint conditions of peak-valley difference improvement target value, grid load, battery power, battery capacity, etc.

Energy storage containers to reduce peak loads and fill valleys

Abstract: In order to make the energy storage system achieve the expected peak-shaving and valley-filling effect, an energy-storage peak-shaving scheduling strategy considering the improvement goal of peak-valley difference is proposed.

Finally, taking the actual load data of a certain area as an example, the advantages and disadvantages of this strategy and the constant power control strategy are compared through simulation, and it is verified that this strategy has a better effect of peak shaving and valley filling. Conferences > 2021 11th International Confe...

First, according to the load curve in the dispatch day, the baseline of peak-shaving and valley-filling during peak-shaving and valley filling is calculated under the constraint conditions of peak-valley difference improvement target value, grid load, battery power, battery capacity, etc.

In order to make the energy storage system achieve the expected peak-shaving and valley-filling effect, an energy-storage peak-shaving scheduling strategy consi

The results show that, with the combined approach, both the local peak load and the global peak load can be reduced, while the stress on the energy storage is not significantly increased.

Explore how energy storage systems enable peak shaving and valley filling to reduce electricity costs, stabilize the grid, and improve renewable energy integration.

Based on our review of existing state and utility programs, CEG/CESA recommends that states consider the following best practices for using energy storage for peak demand reduction:

Abstract: In order to make the energy storage system achieve the expected peak-shaving and valley-filling effect, an energy-storage peak-shaving scheduling strategy ...

The 6 GW Roadmap will support a buildout of storage deployments estimated to reduce projected future statewide electric system costs by nearly \$2 billion, in addition to ...

Abstract: In order to make the energy storage system achieve the expected peak-shaving and valley-filling effect, an energy-storage peak-shaving scheduling strategy considering the

Abstract: In order to make the energy storage system achieve the expected peak-shaving and valley-filling effect, an energy-storage peak-shaving scheduling strategy ...

This article will introduce Tycorun to design industrial and commercial energy storage peak-shaving and valley-filling projects for customers.

In order to reduce the difference between peak load and off-peak load in summer and reduce the capacity of traditional energy storage system, an optimization strategy

Discover how industrial and commercial energy storage systems reduce electricity costs through peak shaving, valley filling, and advanced cost-saving strategies.

Discover how industrial and commercial energy storage systems reduce electricity costs through peak shaving, valley filling, and advanced cost-saving strategies.

Contact Us

For catalog requests, pricing, or partnerships, please visit:

<https://www.pdeozepv.pl>