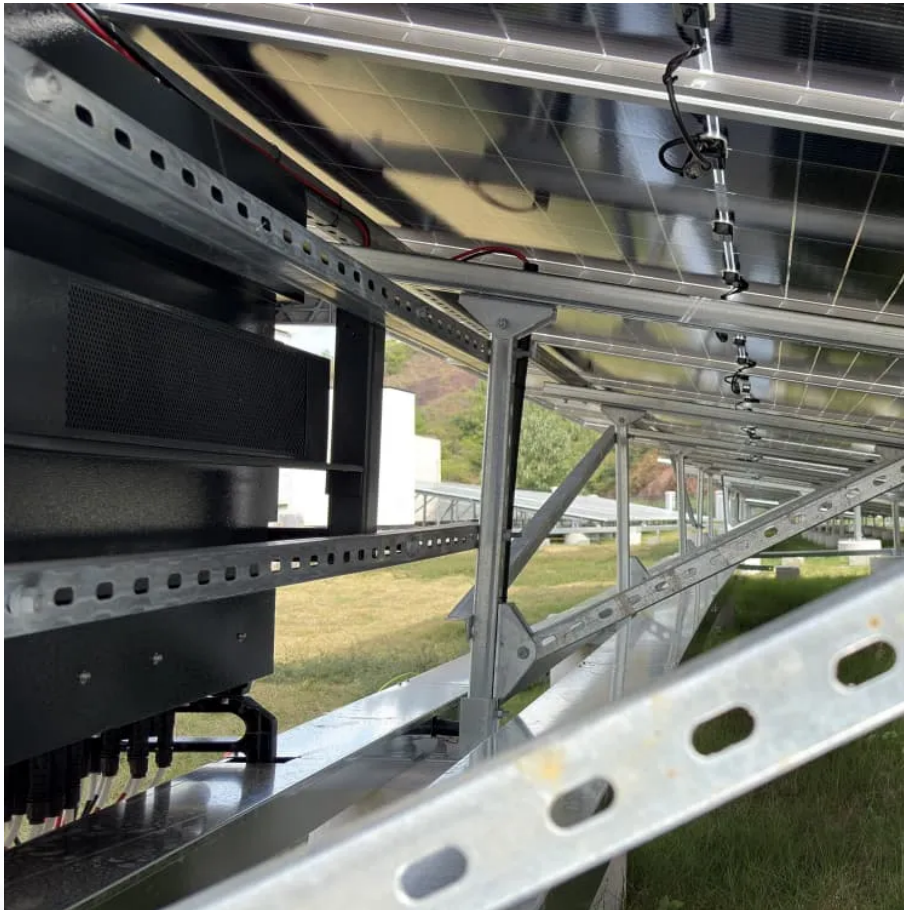


PDEOZE PowerContainer

Do solar inverters have different sizes



Overview

Inverters work most efficiently when operating near their maximum capacity and are typically sized to be roughly the same size as your solar panels. Inverters are usually sized lower than the kilowatt peak (kWp) of the solar array because solar panels rarely achieve peak power.

Inverters work most efficiently when operating near their maximum capacity and are typically sized to be roughly the same size as your solar panels. Inverters are usually sized lower than the kilowatt peak (kWp) of the solar array because solar panels rarely achieve peak power.

Solar inverters convert the direct current (DC) electricity produced by solar panels to alternating current (AC) electricity, which is used to power home appliances and electronic devices. While there are several types of inverters including hybrid, grid-tie, and off-grid inverters they all perform.

Choosing the right solar inverter size is critical—and one of the most common questions: what solar inverter size do I need?

Whether you are installing a rooftop system in California, powering a remote cabin in Alberta, or sizing for a community center in Rajasthan, getting it right means.

A properly sized solar inverter typically lasts 10-15 years, though premium or microinverter units can reach 20-25 years with good maintenance. Think of inverter sizing like choosing the right-sized engine for your car. Too small, and you'll struggle on hills. Too large, and you're paying for power.

A perfectly sized solar inverter ensures you're maximizing the energy your panels produce, avoiding unnecessary losses, and setting your home up for long-term savings. Whether you're planning a new solar installation or upgrading your existing setup, understanding inverter sizing can feel.

This guide breaks down what size solar inverter you actually need—so your setup runs smooth, efficient, and stress-free from day one. What Size Solar Inverter Do I Need?

A solar inverter should closely match your solar system's output in kW—typically within 80% to 120% of your total panel capacity.

The size of a solar inverter is crucial because it determines how much energy can flow to your home and battery at any given time. More specifically, the inverter ensures that enough energy can flow from your solar panels to the grid and load or if installed with a battery, from and to the battery.

Do solar inverters have different sizes

Inverters work most efficiently when operating near their maximum capacity and are typically sized to be roughly the same size as your solar panels. Inverters are usually sized lower than ...

Wondering what size solar inverter do I need for your solar system? This guide walks you through calculating inverter size based on panel capacity, power usage, and safety margins.

Additional Resources [How to Size a Home Power Inverter - SRNE Solar Inverter Basics Explained](#) - This comprehensive guide empowers you to select the right ...

Learn how to choose the right solar inverter size for maximum efficiency, energy savings, and system performance. Avoid common pitfalls and boost ROI.

In this guide, we share 3 easy steps on how to size a solar inverter correctly. We explain the key concepts that determine solar inverter sizing including your power needs, the type and number ...

This guide covers the key factors to consider, different types of inverters, and how to select the best one for your home or business, ensuring you make an informed and cost ...

During our research, we discovered that most inverters range in size from 300 watts up to over 3000 watts. In this article, we guide you through the different inverter sizes. ...

Wondering what size solar inverter do I need for your solar system? This guide walks you

through calculating inverter size based on panel capacity, power usage, and safety ...

The size of the solar inverter you need is directly related to the output of your solar panel array. The inverter's capacity should ideally match the DC rating of your solar panels in ...

Learn how to choose the right solar inverter size for maximum efficiency, energy savings, and system performance. Avoid common pitfalls and boost ROI.

Picking the right solar inverter isn't rocket science, but it's not a wild guess either. Match your inverter size to your solar panel output, leave a little headroom, and don't cheap ...

Inverters work most efficiently when operating near their maximum capacity and are typically sized to be roughly the same size as your solar panels. Inverters are usually sized lower than the kilowatt peak (kWp) of the solar ...

Additional Resources How to Size a Home Power Inverter - SRNE Solar Inverter Basics Explained - This comprehensive guide empowers you to select the right ...

Learn how to properly size your solar inverter with our complete guide. Discover the optimal DC-to-AC ratio and avoid costly sizing mistakes.

Contact Us

For catalog requests, pricing, or partnerships, please visit:
<https://www.pdeozepv.pl>