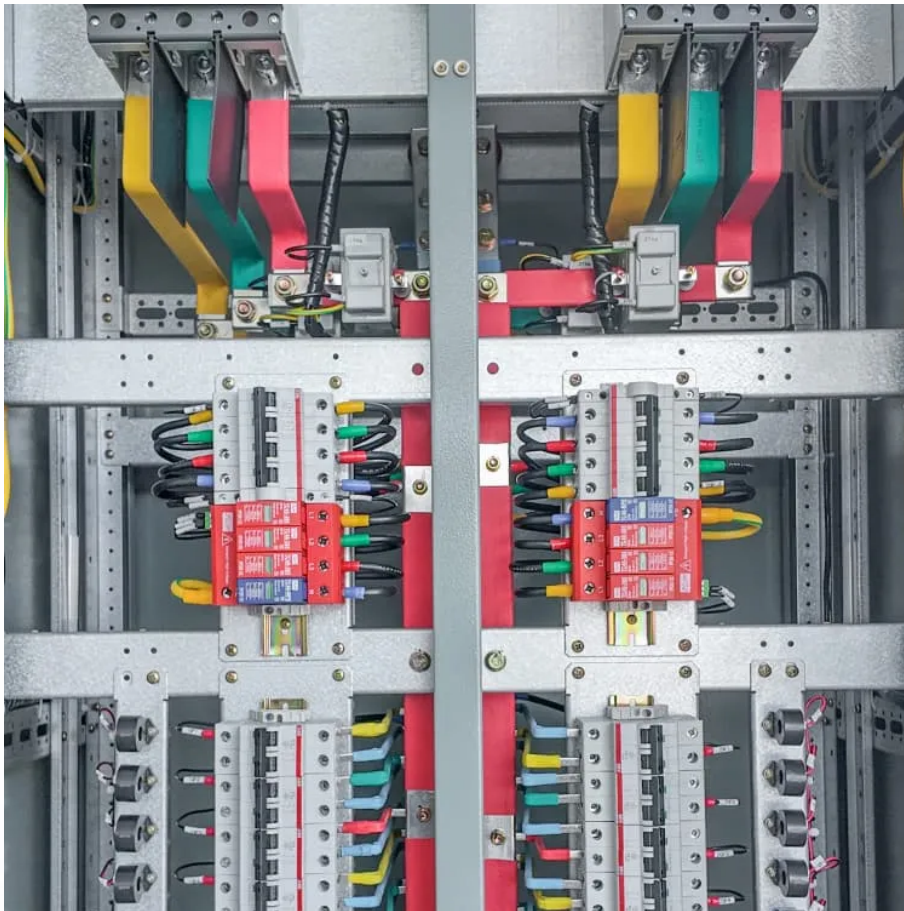


PDEOZE PowerContainer

Different-sided solar panels



Overview

Bifacial solar panels, the reversible fashion accessory of the solar industry, are double-sided panels that absorb solar energy from both sides. Tests by solar manufacturers have found these panels can generate 11% to 23% more energy than their monofacial or single-sided counterparts.

Bifacial solar panels, the reversible fashion accessory of the solar industry, are double-sided panels that absorb solar energy from both sides. Tests by solar manufacturers have found these panels can generate 11% to 23% more energy than their monofacial or single-sided counterparts.

These double-sided solar panels make the most sense in solar farms and commercial systems, but they can work for your home if you have the right setup. Bifacial panels can work on your roof, but not if they're installed flush. Solar panels generally rely on energy coming directly from the sun. But.

While traditional solar panels only harvest light from one side, bifacial technology transforms previously wasted reflected light into valuable energy, potentially increasing power generation by up to 30%. In Europe's rapidly evolving renewable energy landscape, bifacial solar panels represent the.

Bifacial solar panels represent an innovation in the realm of solar technology, uniquely crafted to harness sunlight from both their front and back surfaces. This distinctive design stands in contrast to the conventional panels that many of us are familiar with, offering potential advantages in.

Bifacial solar panels are known to increase electricity generation by up to 27%. Why trust EnergySage?

As subject matter experts, we provide only objective information. We design every article to provide you with deeply-researched, factual, useful information so that you can make informed home.

Bifacial solar panels produce solar power from both sides and deliver up to 30% more energy, but are they worth it?

Let's find out. A great thing about solar panels is that they keep working all day. It doesn't matter if the sun's just risen, or just about to set — your panels will pick whatever.

As solar technology evolves, homeowners face a crucial decision between traditional monofacial panels and their innovative bifacial counterparts. While monofacial panels capture sunlight only from their front surface, bifacial panels harness energy from both sides, potentially boosting energy.

Different-sided solar panels

Bifacial solar panels, the reversible fashion accessory of the solar industry, are double-sided panels that absorb solar energy from both sides. Tests by solar manufacturers have found

Bifacial solar panels are double-sided panels that use both the top and bottom sides to capture and transform the solar energy. They've been around since they were first used in ...

Unlike traditional monofacial panels that only absorb sunlight on their front surface, bifacial solar panels generate electricity from both sides --capturing direct sunlight on the front ...

Learn how bifacial solar panels capture sunlight on both sides to boost energy output. Discover benefits, ideal use cases, and tips for effective installation.

Bifacial solar panels can produce 5% to 30% more energy per panel than single-sided traditional panels. This makes them especially useful in situations where horizontal ...

Bifacial solar panels can capture light energy on both sides of the panel, whereas monofacial panels (AKA traditional solar panels) only ...

What Are Bifacial Solar Panels? Bifacial solar panels represent an innovation in the realm of solar technology, uniquely crafted to harness sunlight from both their front and back ...

What Are Bifacial Solar Panels? Bifacial solar panels represent an innovation in the realm

of solar technology, uniquely crafted to harness sunlight from both their front and back surfaces.

While traditional solar panels only harvest light from one side, bifacial technology transforms previously wasted reflected light into valuable energy, potentially increasing power ...

Unlike traditional solar panels, these innovative devices capture sunlight from both sides, significantly increasing energy yield. By harnessing reflected light from surrounding surfaces, ...

Bifacial solar panels, the reversible fashion accessory of the solar industry, are double-sided panels that absorb solar energy from both sides. Tests by solar manufacturers have found

While monofacial panels capture sunlight only from their front surface, bifacial panels harness energy from both sides, potentially boosting energy production by 5-30% ...

While monofacial panels capture sunlight only from their front surface, bifacial panels harness energy from both sides, potentially boosting energy production by 5-30% under optimal conditions.

Bifacial solar panels can capture light energy on both sides of the panel, whereas monofacial panels (AKA traditional solar panels) only absorb sunlight on the front.

Contact Us

For catalog requests, pricing, or partnerships, please visit:
<https://www.pdeozepv.pl>