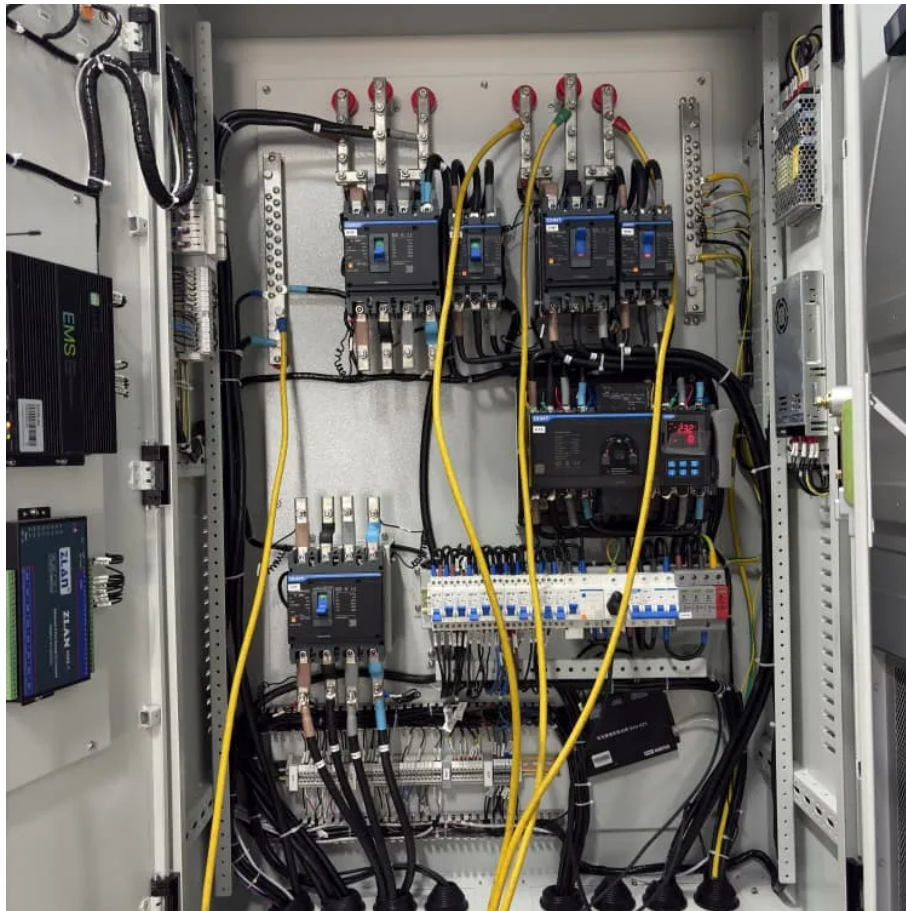


## PDEOZE PowerContainer

# DC inverter efficiency



## Overview

---

Most modern inverters have efficiency ratings between 90% and 98%. Let's break it down: If you feed 1000 watts of DC power into your inverter and it outputs 950 watts of AC power, your inverter efficiency is 95%. The other 50 watts were lost in the conversion process—mostly as heat.

## DC inverter efficiency

---

Inverter efficiency is defined as the percentage of direct current (DC) power that can be converted to alternating current (AC) by an inverter, calculated over daily, monthly, and yearly periods.

For the two basic inverter types in the market, the typical efficiency of high-quality pure sine wave inverter varied from 90% to 95% and for low quality modified sine wave ...

Inverter efficiency is how much Direct Current (DC) is converted into Alternating Current (AC). This is the primary function of an inverter, unfortunately, it is not 100% efficient. It means that ...

A: The efficiency of a DC to AC inverter is usually the ratio between the output AC energy and the input DC energy. High-quality inverters may have conversion efficiencies ...

In simple terms, inverter efficiency refers to how well an inverter converts DC electricity into usable AC power. No inverter is 100% efficient--some energy always gets lost ...

It refers to the effectiveness of an inverter in converting DC power into AC power with minimal losses. Expressed as a percentage, its efficiency is calculated by dividing the AC ...

Inverter efficiency refers to the ratio of the output power of the inverter to the input power, expressed as a percentage. It indicates how effectively the inverter converts DC power ...

The efficiency of an inverter indicates how much DC power is converted to AC power. Some of the power can be lost as heat, and also some stand-by power is consumed for keeping the ...

Sandia National Laboratories and BEW have worked together to develop a test protocol to measure inverter efficiency as a function of AC output power and DC voltage. This protocol ...

The efficiency of an inverter refers to the amount of AC output power it provides for a given DC input. This normally falls between 85 and 95 percent, with 90 percent being the ...

It refers to the effectiveness of an inverter in converting DC power into AC power with minimal losses. Expressed as a percentage, its efficiency is calculated by dividing the AC output power by the DC input ...

Inverter efficiency is how much Direct Current (DC) is converted into Alternating Current (AC). This is the primary function of an inverter, unfortunately, it is not 100% efficient. It means that energy is lost during ...

## Contact Us

---

For catalog requests, pricing, or partnerships, please visit:  
<https://www.pdeozepv.pl>