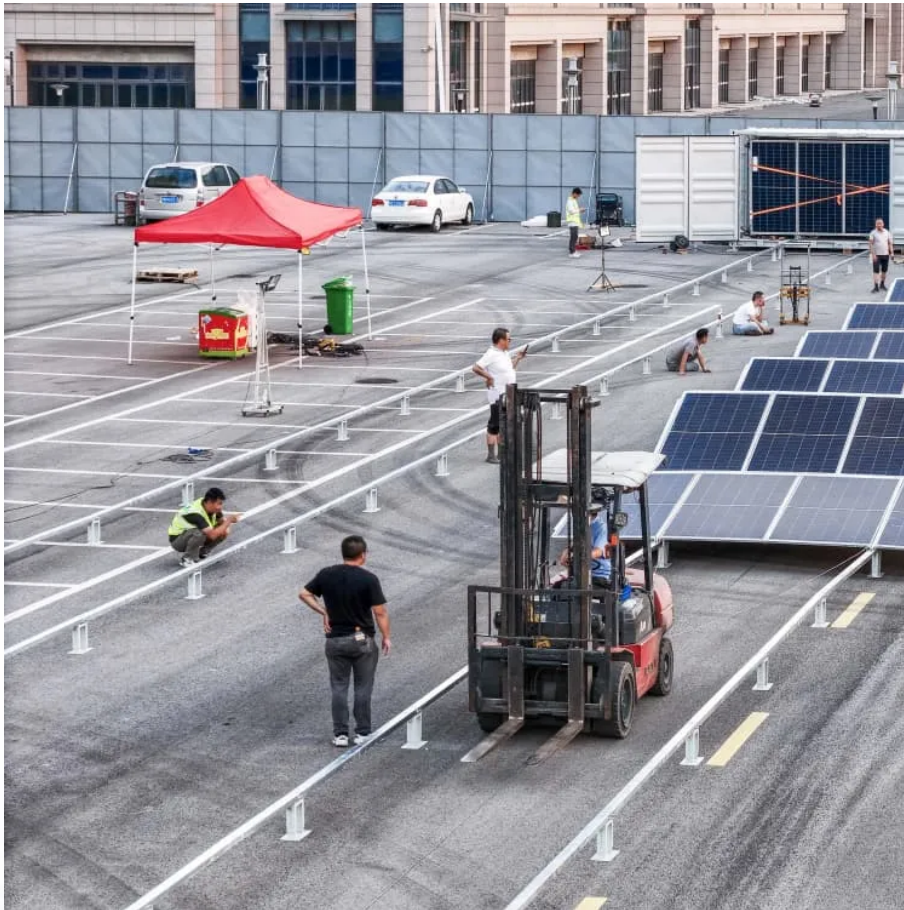


PDEOZE PowerContainer

Concentrated layout of energy storage equipment projects



Overview

The rapidly increasing installed renewable energy capacity has drawn greater attention to energy storage technology in China. However, the commercial implementation of energy storage is constrained.

What are the application scenarios for energy storage systems?

There is an extensive range of application scenarios for industrial and commercial energy storage systems, including industrial parks, data centers, communication base stations, government buildings, shopping malls and hospitals.

How many electrochemical storage stations are there in 2022?

In 2022, 194 electrochemical storage stations were put into operation, with a total stored energy of 7.9GWh. These accounted for 60.2% of the total energy stored by stations in operation, a year-on-year increase of 176% (Figure 4).

Why is energy storage a viable solution to power curtailment?

Therefore, power station equipped with energy storage has become a feasible solution to address the issue of power curtailment and alleviate the tension in electricity supply and demand.

How do energy storage devices affect power balance and grid reliability?

It is crucial to integrate energy storage devices within wind power and photovoltaic (PV) stations to effectively manage the impact of large-scale renewable energy generation on power balance and grid reliability. However, existing studies have not modelled the complex coupling between different types of power sources within a station.

Do independent energy storage power stations lease capacity?

Independent energy storage stations lease capacity to wind power, PV, and other new energy stations. Capacity leasing is a stable source of income for owners of independent energy storage power stations. The capacity leased can be seen as energy storage capacity built for new energy projects.

Which energy storage projects have a low utilisation co-efficient?

According to a survey by the China Electricity Council, new energy distribution and storage projects have a low equivalent utilisation co-efficient of 6.1%, the lowest among the application scenarios, while the average for electrochemical energy storage projects is 12.2% (Figure 8).

Concentrated layout of energy storage equipment projects

There is an extensive range of application scenarios for industrial and commercial energy storage systems, including industrial parks, data centers, communication base stations, government buildings, shopping malls and hospitals.

In 2022, 194 electrochemical storage stations were put into operation, with a total stored energy of 7.9GWh. These accounted for 60.2% of the total energy stored by stations in operation, a year-on-year increase of 176% (Figure 4).

Therefore, power station equipped with energy storage has become a feasible solution to address the issue of power curtailment and alleviate the tension in electricity supply and demand.

It is crucial to integrate energy storage devices within wind power and photovoltaic (PV) stations to effectively manage the impact of large-scale renewable energy generation on power balance and grid reliability. However, existing studies have not modelled the complex coupling between different types of power sources within a station.

Independent energy storage stations lease capacity to wind power, PV, and other new energy stations. Capacity leasing is a stable source of income for owners of independent energy storage power stations. The capacity leased can be seen as energy storage capacity built for new energy projects.

According to a survey by the China Electricity Council, new energy distribution and storage projects have a low equivalent utilisation co-efficient of 6.1%, the lowest among the application scenarios, while the average for electrochemical energy storage projects is 12.2% (Figure 8).

Then, a sizing optimization submodel for the energy station and supply network in park-level integrated energy system is proposed in the second stage based on the optimal siting ...

Feb 15, 2024 · The optimal location layout plays a crucial role in addressing the strategic decision problem of sustainable development. Therefore, a two-stage multi-criteria decision-making ...

Because of the fast response and four-quadrant regulation ability, the application of energy storage has become more wider. This article researches the layout scheme of energy storage ...

Jul 14, 2025 · Let's face it - designing an energy storage facility isn't like rearranging your living room furniture. An energy storage plant layout atlas serves as the ultimate cheat code for ...

Oct 24, 2021 · Because of the fast response and four-quadrant regulation ability, the application of energy storage has become more wider. This article researches the layout scheme of energy ...

Energy storage has reshaped the dynamics of power generation, distribution, and consumption. From vast grid installations to sleek residential battery systems, energy storage technologies ...

Sep 26, 2022 · In order to optimize the comprehensive configuration of energy storage in the new type of power system that China develops, this paper designs operation modes of energy ...

Nov 26, 2023 · The development path of new energy and energy storage technology is crucial for achieving carbon neutrality goals. Based on the SWITCH-China model, this study explores the ...

Oct 24, 2025 · Depending on how energy is stored, storage technologies can be broadly divided into the following three categories: thermal, electrical and hydrogen (ammonia). The electrical ...

In order to optimize the comprehensive configuration of energy storage in the new type of power system that China develops, this paper designs operation modes of energy storage and constructs a

Depending on how energy is stored, storage technologies can be broadly divided into the following three categories: thermal, electrical and hydrogen (ammonia). The electrical category ...

Integration of energy storage in wind and photovoltaic stations improves power balance and grid reliability. A two-stage model optimizes configuration and operation, extending storage lifespan from 4

What is energy storage technology? Proposes an optimal scheduling model built on functions on power and heat flows. Energy Storage Technology is one of the major components of ...

Jan 1, 2024 · Then, a sizing optimization submodel for the energy station and supply network in park-level integrated energy system is proposed in the second stage based on the optimal ...

The development path of new energy and energy storage technology is crucial for achieving carbon neutrality goals. Based on the SWITCH-China model, this study explores the ...

Jun 29, 2024 · Integration of energy storage in wind and photovoltaic stations improves power balance and grid reliability. A two-stage model optimizes configuration and operation, ...

Let's face it - designing an energy storage facility isn't like rearranging your living room furniture. An energy storage plant layout atlas serves as the ultimate cheat code for engineers, project ...

Contact Us

For catalog requests, pricing, or partnerships, please visit:
<https://www.pdeozepv.pl>