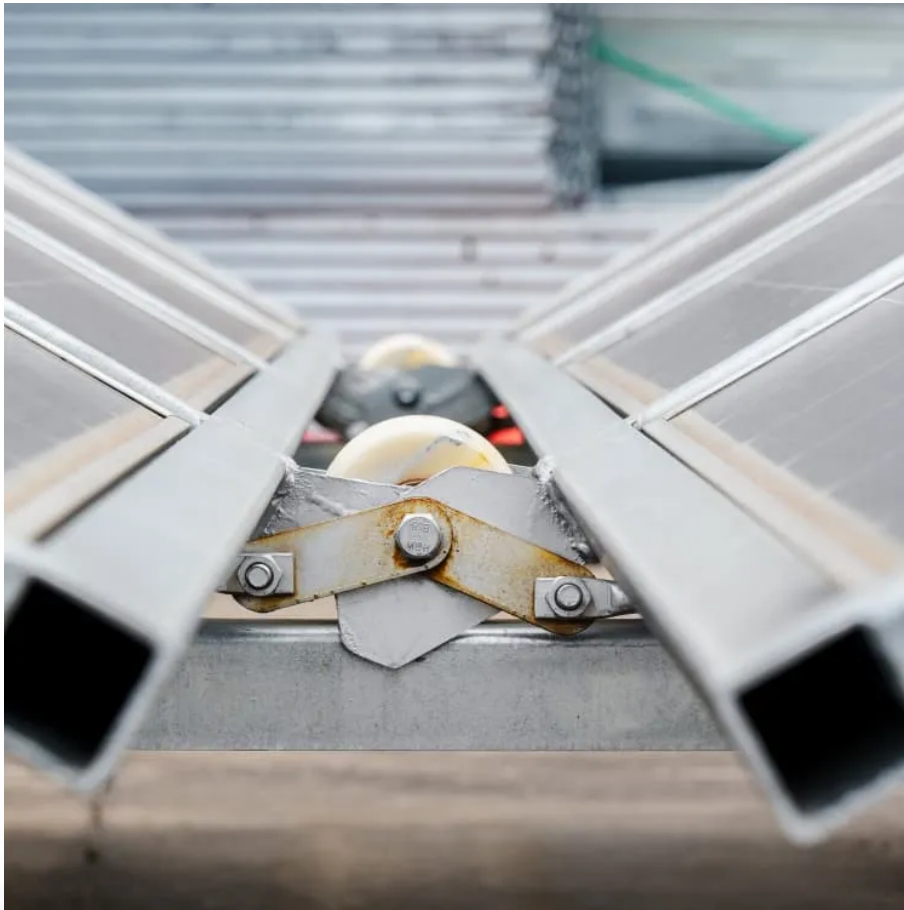


PDEOZE PowerContainer

Companies that make green communication base stations



Overview

Teltronic unveils the new GBS (Green Base Station), a TETRA base station that incorporates AI algorithms to minimize energy consumption and environmental impact.

Teltronic unveils the new GBS (Green Base Station), a TETRA base station that incorporates AI algorithms to minimize energy consumption and environmental impact.

Teltronic, a Spanish company with 50 years of experience in the design, development, and deployment of critical communications solutions, has introduced its new GBS (Green Base Station) during the Critical Communications World event. This next-generation TETRA base station integrates Artificial.

Spain's Teltronic has introduced its new GBS (Green Base Station) during the Critical Communications World event. This next-generation TETRA base station integrates artificial intelligence algorithms to minimise energy consumption and reduce environmental impact. Designed in compliance with IEC.

Department of Electrical Engineering, College of Electronics and Information Engineering, Sejong University, 209 Neungdong-ro, Gwangjin-gu, Seoul 05006, Korea Author to whom correspondence should be addressed. Energy efficiency and renewable energy are the main pillars of sustainability and.

The new GBS (Green Base Station) uses Machine Learning techniques to optimize power consumption Teltronic, a Spanish company with 50 years of experience in the design, development, and deployment of critical communications solutions, has introduced its new GBS (Green Base Station) during the.

Hybrid Energy Solutions for mobile communication sites, utilizing wind, solar, and diesel power for reliable, continuous energy. Whether you need a grid-tied, off-grid, or hybrid system, with or without battery storage, and even distributed setups, we offer fully customizable renewable energy.

With IoT and connected smart cars, the introduction of 5G technology means more data travelling across the world's networks, which means we are using ever greater amounts of energy. That, of course, leads to a larger carbon footprint at exactly the time the world needs to make it much smaller.

Companies that make green communication base stations

Spain's Teltronic has introduced its new GBS (Green Base Station) during the Critical Communications World event. This next-generation TETRA base station integrates artificial intelligence algorithms ...

Spain's Teltronic has introduced its new GBS (Green Base Station) during the Critical Communications World event. This next-generation TETRA base station integrates ...

Discover how solar energy is reshaping communication base stations by reducing energy costs, improving reliability, and boosting sustainability. Explore Huijue's solar solutions for a greener, more efficient ...

Teltronic unveils the new GBS (Green Base Station), a TETRA base station that incorporates AI algorithms to minimize energy consumption and environmental impact.

Energy efficiency and renewable energy are the main pillars of sustainability and environmental compatibility. This study presents an overview of sustainable and green cellular ...

As global mobile data traffic surges 35% annually, communication base stations face unprecedented demands. Can traditional tower designs sustain hyper-connected smart cities ...

Teltronic unveils the new GBS (Green Base Station), a TETRA base station that incorporates AI algorithms to minimize energy consumption and environmental impact.

Get access to the business profiles of top 20 5G Base Station companies, providing in-

depth details on their company overview, key products and services, financials, recent developments ...

Large-scale telecom providers: Companies like CATL and LG Energy Solution offer scalable, high-capacity solutions suited for extensive networks. Cost-sensitive projects: ...

Get access to the business profiles of top 20 5G Base Station companies, providing in-depth details on their company overview, key products and services, financials, recent developments and strategic moves.

Large-scale telecom providers: Companies like CATL and LG Energy Solution offer scalable, high-capacity solutions suited for extensive networks. Cost-sensitive projects: ...

To comply with the Paris Agreement, the ICT industry should reduce its greenhouse gas emissions by 45% between 2020 and 2030. Easier said than done with all the ongoing data ...

Teltronic, a Spanish company with 50 years of experience in the design, development, and deployment of critical communications solutions, has introduced its new GBS (Green Base ...

Discover how solar energy is reshaping communication base stations by reducing energy costs, improving reliability, and boosting sustainability. Explore Huijue's solar solutions ...

Teltronic, a Spanish company with 50 years of experience in the design, development, and deployment of critical communications solutions, has introduced its new GBS (Green Base ...

These outcomes demonstrate that upgrading to low-carbon base stations not only ensures economic feasibility but also delivers significant environmental and public health ...

Contact Us

For catalog requests, pricing, or partnerships, please visit:
<https://www.pdeozepv.pl>