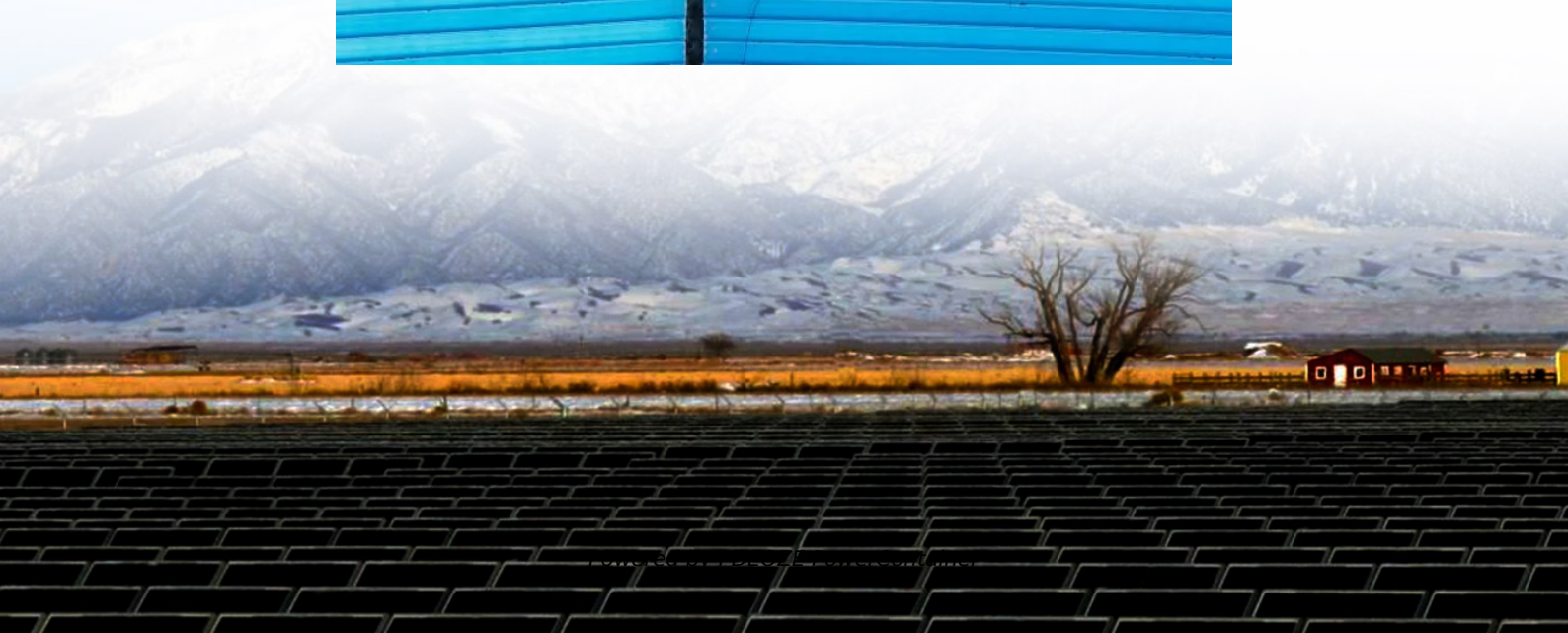
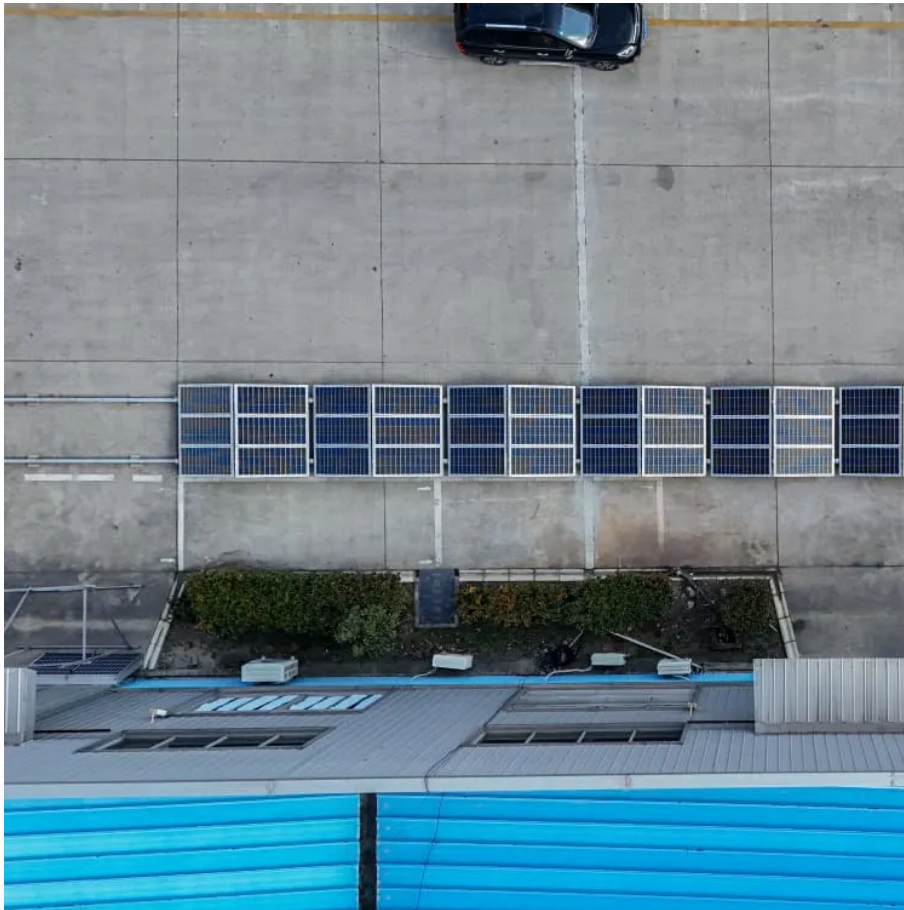


## PDEOZE PowerContainer

**Can a 24v inverter be used on a  
48v**



## Overview

---

A 24V inverter is designed for 24 volts. Connecting it to a 48V battery can lead to overvoltage. This can damage the inverter and any devices plugged into it. Always ensure the inverter specifications match the battery voltage for safe use.

A 24V inverter is designed for 24 volts. Connecting it to a 48V battery can lead to overvoltage. This can damage the inverter and any devices plugged into it. Always ensure the inverter specifications match the battery voltage for safe use.

A 24V inverter is designed for 24 volts. Connecting it to a 48V battery can lead to overvoltage. This can damage the inverter and any devices plugged into it. Always ensure the inverter specifications match the battery voltage for safe use. If you desire to use a 24V inverter with a 48V battery.

Inverters are designed to work with specific input voltage levels, and a 48V inverter is built to operate with a 48V power supply. Connecting a 24V battery to a 48V inverter will likely result in inefficiency, system failure, or even damage to the components. This mismatch occurs because the.

Good Day Everyone, please I am new to this forum and I noticed that a discussion about the question I wanted to ask was discussed already, which is it's not possible to use a 24volts lithium battery with a 48volts inverter. I already bought the 24volts battery and specifically the Growatt SPF.

24V and 48V inverters have different input voltages, and inverters with different voltages must be matched to the correct equipment. If your TV requires 48V, you will need to purchase a 48V inverter to operate it. The different voltage levels have significant differences in efficiency, cost, and.

If you need to use a 24V inverter with a 48V battery, you have several alternatives. The most common options include using a DC-DC converter, a step-down transformer, or purchasing a 24V battery system. Each alternative has its advantages and limitations, depending on your specific energy.

Can a 24v inverter run from half of a 48 volt bank?

I have 24 x 12 volt Unigy AGM batteries. I have two banks of 12 batteries each setup as 24 volts. I want to connect the two banks in series to create 1 big 48 volt bank. I have a 24 volt Samlex 1000 I wanted to connect to one of the banks. Would.

## Can a 24v inverter be used on a 48v

---

For the same amount of power, a 48V inverter outputs half the current of a 24V inverter. Lower current means less energy lost. Especially over long distances, 48V inverters have the advantage of reducing the ...

Although 48v inverters tend to provide better efficiency for larger installations, 24v inverters may still be a suitable option for smaller setups with low-power applications. The cost ...

We lost our 24V Outback inverter to lightning. It was a simple plug and play to get the updated inverter, having the Midnite Solar back panel with necessary bus bars and ...

For the same amount of power, a 48V inverter outputs half the current of a 24V inverter. Lower current means less energy lost. Especially over long distances, 48V inverters ...

If the manual says explicitly not to do this why would you think it's OK to do so anyways? No you cannot do so. You need a 24 volt inverter, or a different battery.

Connecting a 48V inverter directly to a 24V battery is not recommended and can lead to serious technical issues or equipment failure. Here's a detailed look into why this setup ...

I want to connect the two banks in series to create 1 big 48 volt bank. I have a 24 volt Samlex 1000 I wanted to connect to one of the banks. Would that work or would the samlex see the ...

No, a 48V inverter cannot operate with a 24V battery. The voltage of the battery must

match the voltage requirement of the inverter for proper functionality. Inverters convert ...

If you need to use a 24V inverter with a 48V battery, you have several alternatives. The most common options include using a DC-DC converter, a step-down transformer, or ...

No, you cannot directly use a 24V inverter on a 48V battery without taking additional steps. The voltage difference between the 24V inverter and the 48V battery is ...

Although 48v inverters tend to provide better efficiency for larger installations, 24v inverters may still be a suitable option for smaller setups with low-power applications. The cost comparison between 24v ...

Using a 24V inverter with a 48V battery is generally incompatible due to voltage mismatches. The inverter is designed to operate within a specific voltage range, and ...

If you need to use a 24V inverter with a 48V battery, you have several alternatives. The most common options include using a DC-DC converter, a step-down transformer, or ...

## Contact Us

---

For catalog requests, pricing, or partnerships, please visit:  
<https://www.pdeozepv.pl>