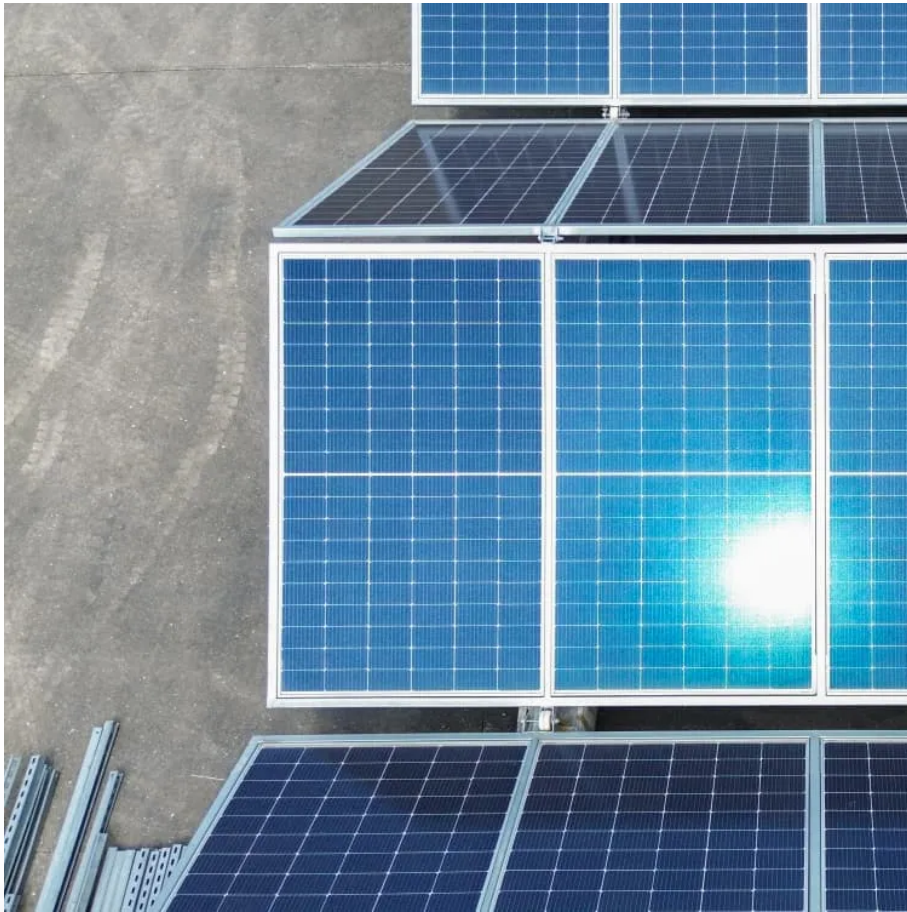


PDEOZE PowerContainer

Can a 12v inverter be connected to a 24v inverter



Overview

A 12V inverter cannot run on a 24V battery. This setup may cause immediate failure and void the warranty. Always verify input specifications before connecting. For safe operation, use an inverter that matches the battery's voltage rating.

Can a 12v inverter be connected to a 24v inverter

To summarize, it is not feasible to run a 12V inverter directly on a 24V battery, which can lead to inverter damage and safety hazards. However, this problem can be effectively solved by using a step-down ...

Torn between 12V and 24V inverters? Discover the key differences in efficiency, cost, and power capacity to determine which is better for your energy needs.

It looks like bigger panels - 160w/24v offer simpler installation, are cheaper, and are more suited to longer cable runs, so that's what I'm looking at, along with an accompanying 24v charge ...

Torn between 12V and 24V inverters? Discover the key differences in efficiency, cost, and power capacity to determine which is better for your energy needs.

To summarize, it is not feasible to run a 12V inverter directly on a 24V battery, which can lead to inverter damage and safety hazards. However, this problem can be ...

Looks like your charger will autodetect 12V or 24V, so you could connect the batteries in parallel and the the charger would work, then you could also connect the inverter directly to both ...

Option 1: keep the 24v, sell the inverter and buy a 24v one. Option 2: make the entire system 12V. If you don't have more parts connected, it's as simple as connect the battery in parallel and ...

No, you cannot safely use a 24V inverter with a 12V battery without causing damage or

failure. The voltage mismatch between the inverter and battery can result in poor ...

No, a 12V inverter cannot operate on a 24V battery without modification. Connecting a 12V inverter to a 24V battery can cause damage to the inverter. The inverter is ...

Use a 12V inverter for small systems, a 24V inverter for medium-sized systems, and a 48V inverter for large systems. Higher voltages give better efficiency and lower ...

Does anyone know if they make something like a 24V to 12V buck converter that can handle the amperage to run say a 2000 watt load max but say a sustained load of 600 watts.

Pairing a 24 volt inverter directly with a lone 12 V battery is a no-go--it starves the inverter and can wreck both battery and electronics. The safe routes are simple: wire two 12 V ...

Looks like your charger will autodetect 12V or 24V, so you could connect the batteries in parallel and the the charger would work, then you could also connect the inverter directly to both batteries in parallel.

Contact Us

For catalog requests, pricing, or partnerships, please visit:
<https://www.pdeozepv.pl>