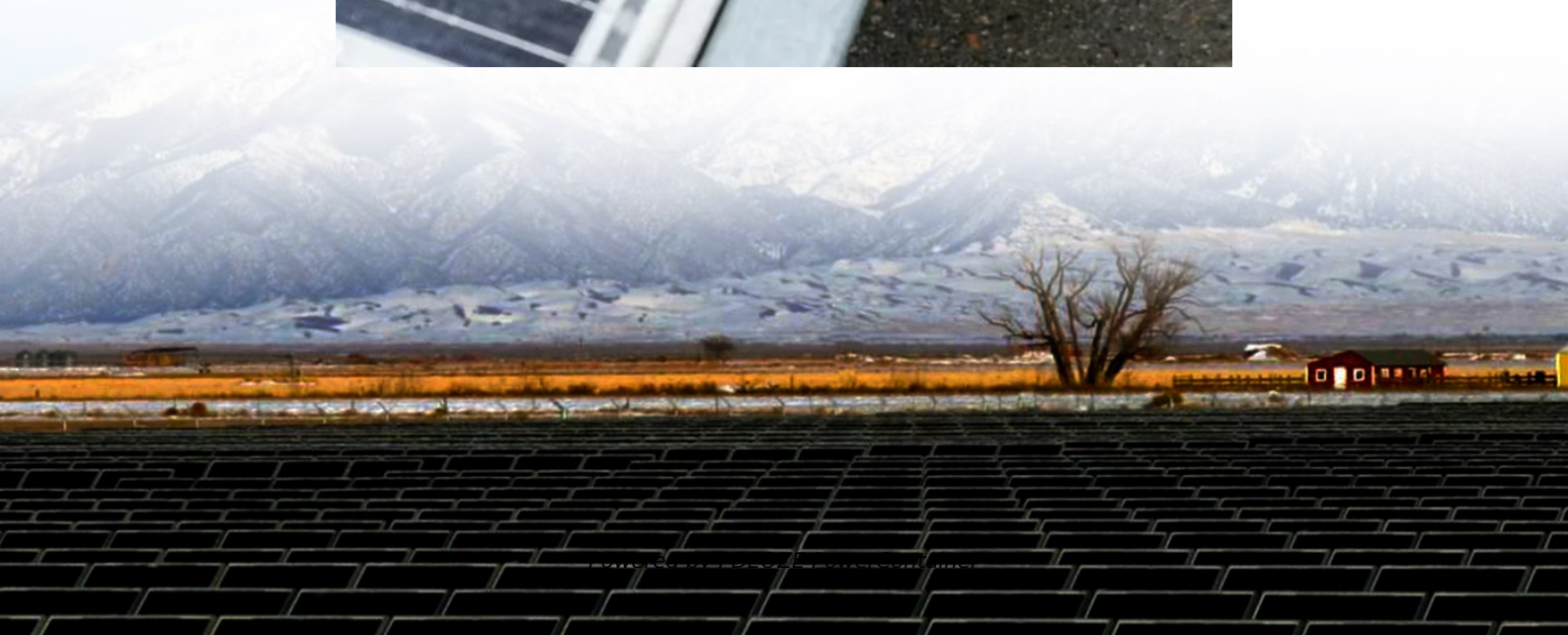
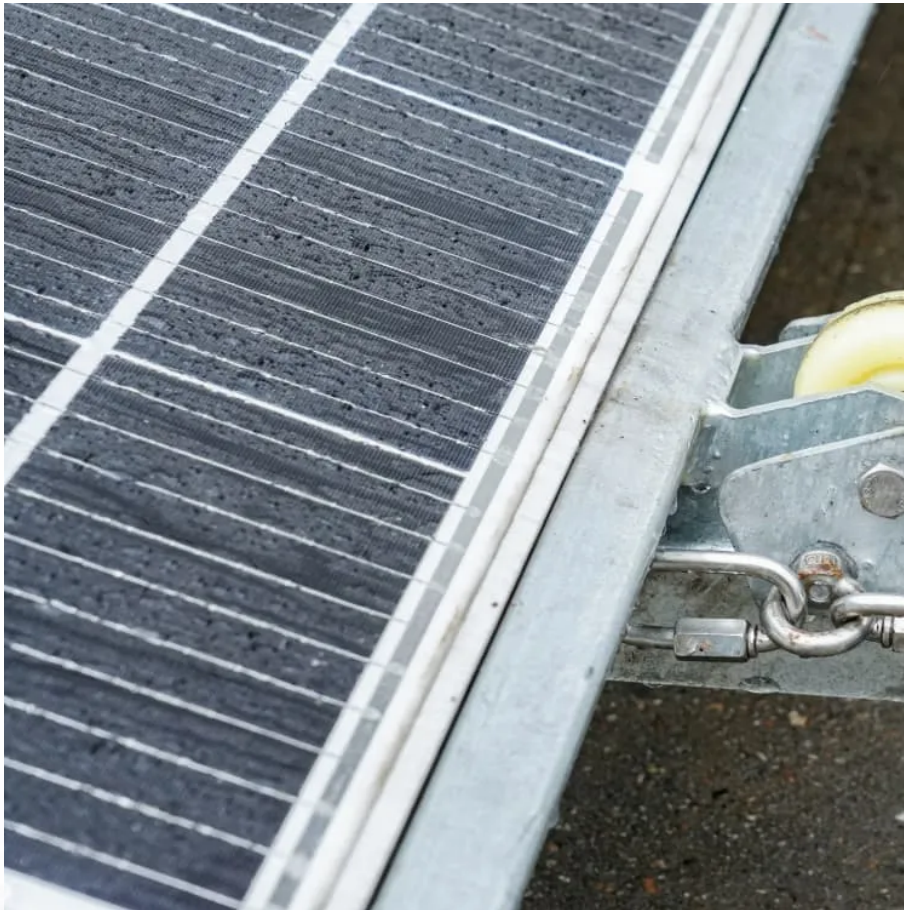


## **PDEOZE PowerContainer**

**Can a 120v lithium battery be used with a 600w inverter**



## Overview

---

The short answer is no - proper inverter matching is crucial for optimal performance and safety. Let's examine the key compatibility factors for lithium battery and LiFePO4 battery systems. How to choose a 600W inverter?

Lastly, always match your 600w inverter to the right battery size. A top-notch inverter is useless if your battery can't handle the load. For example, running a full 600W load on a 100Ah 12V battery will only give you about 1.5-2 hours of runtime.

What is a lithium battery for inverter?

Lithium offers unmatched performance, a longer lifespan, and better efficiency than traditional batteries. Whether you're setting up a home backup system, solar power solution, or mobile energy unit, this guide will walk you through everything you need to know about lithium batteries for inverters. Part 1.

Can a lithium battery run a 1000W inverter?

**Battery Discharge Rate:** Lithium batteries can handle high discharge rates, which aligns well with the power demands of a 1000W inverter. However, verify that the battery's maximum discharge rate exceeds the inverter's power draw. **Temperature and Maintenance:** Lithium batteries perform best within specific temperature ranges.

Should you use a lithium-ion battery for a home inverter?

A lithium-ion battery for a home inverter can significantly enhance your home's energy storage capabilities. This translates to more reliable power during outages and better management of renewable energy resources like solar panels. Lithium-ion batteries require less maintenance and have a longer lifespan compared to traditional batteries.

Is a 600 watt power supply the same as an inverter?

Not quite. A 600 watt power supply typically refers to AC-to-DC converters (like those used in desktop computers). In contrast, a 600W inverter converts DC battery power into AC household electricity. They work in opposite directions.

Can a 600 watt inverter power a solar panel?

Just make sure your solar charge controller and battery bank can keep up with the power you're drawing. For example, a 600-watt solar panel array with a matching battery setup can comfortably supply power to a 600w inverter during the day and even provide stored energy for nighttime use. Is a 600 watt power supply the same as a 600W inverter?

## Can a 120v lithium battery be used with a 600w inverter

---

Lastly, always match your 600w inverter to the right battery size. A top-notch inverter is useless if your battery can't handle the load. For example, running a full 600W load on a 100Ah 12V battery will only give you about 1.5-2 hours of runtime.

Lithium offers unmatched performance, a longer lifespan, and better efficiency than traditional batteries. Whether you're setting up a home backup system, solar power solution, or mobile energy unit, this guide will walk you through everything you need to know about lithium batteries for inverters. Part 1.

**Battery Discharge Rate:** Lithium batteries can handle high discharge rates, which aligns well with the power demands of a 1000W inverter. However, verify that the battery's maximum discharge rate exceeds the inverter's power draw. **Temperature and Maintenance:** Lithium batteries perform best within specific temperature ranges.

A lithium-ion battery for a home inverter can significantly enhance your home's energy storage capabilities. This translates to more reliable power during outages and better management of renewable energy resources like solar panels. Lithium-ion batteries require less maintenance and have a longer lifespan compared to traditional batteries.

Not quite. A 600 watt power supply typically refers to AC-to-DC converters (like those used in desktop computers). In contrast, a 600W inverter converts DC battery power into AC household electricity. They work in opposite directions.

Just make sure your solar charge controller and battery bank can keep up with the power you're drawing. For example, a 600-watt solar panel array with a matching battery setup can comfortably supply power to a 600w inverter during the day and even provide stored energy for nighttime use. Is a 600 watt power supply the same as a 600W

inverter?

Jul 21, 2025 · The Bottom Line While lithium batteries can't work with every inverter, most modern solar and off-grid inverters now offer lithium compatibility. For optimal performance in home ...

Sep 1, 2025 · Conclusion Matching a lithium solar battery with an inverter is not as complicated as it might seem. By considering factors like voltage compatibility, capacity, power rating, surge ...

Mar 3, 2023 · Pairing a right size capacity battery for an inverter can be a bit confusing for most the beginners So I have made it easy for you, use the calculator below to calculate the battery ...

Sep 1, 2025 · Conclusion Matching a lithium solar battery with an inverter is not as complicated as it might seem. By considering factors like voltage compatibility, capacity, power rating, surge capacity, battery type ...

Aug 29, 2024 · Learn how to seamlessly integrate lithium-ion batteries with existing inverters for efficient and reliable power solutions. Maximize ...

Learn how to seamlessly integrate lithium-ion batteries with existing inverters for efficient and reliable power solutions. Maximize energy storage with Invertek Energy.

Jun 24, 2025 · A lithium battery for inverter is a rechargeable battery that uses lithium-ion technology to store energy. It works with inverters by delivering direct current (DC), which the ...

Aug 20, 2024 · Assuming a 12V battery:  $Wh=200\text{ Ah}\times 12\text{ V}=2400\text{ Wh}$  Thus, a 200 Ah battery at 12 volts has a capacity of 2400 watt-hours. This metric is vital for determining how long a battery ...

Jul 21, 2025 · The Bottom Line While lithium batteries can't work with every inverter, most modern solar and off-grid inverters now offer lithium compatibility. For optimal performance in home energy stems, choose an ...

Jun 9, 2025 · Discover what a 600w inverter can run, from laptops to small appliances. Learn usage tips, battery needs, and best practices for off-grid or backup power.

Inverter Battery Size Calculator  
How to Calculate Battery Capacity For Inverter  
How Many Batteries For 3000-Watt Inverter  
Battery Size Chart For Inverter  
Battery to Inverter Wire Size Chart  
To calculate the battery capacity for your inverter use this formula  
$$\text{Inverter capacity (W)} \times \text{Runtime (hrs)} / \text{solar system voltage} = \text{Battery Size} \times 1.15$$
  
Multiply the result by 2 for lead-acid type battery, for lithium battery type it would stay the same  
Example Let's suppose you have a 3000-watt inverter with an 85% efficiency rate and your daily runtime  
See more on dotwatts ufinebattery

Jun 24, 2025 · A lithium battery for inverter is a rechargeable battery that uses lithium-ion technology to store energy. It works with inverters by delivering direct current (DC), which the inverter transforms into ...

Why Battery Chemistry Matters in Inverter Sizing  
Lithium-ion batteries tolerate higher discharge rates (up to 1C) compared to lead-acid (0.5C). A 100Ah LiFePO4 battery can safely power a ...

Oct 8, 2024 · Lithium batteries are widely used in energy storage systems due to their high efficiency, long life cycle, and light weight. Connecting a lithium battery to an inverter is crucial ...

Oct 8, 2024 · Lithium batteries are widely used in energy storage systems due to their high efficiency, long life cycle, and light weight. Connecting a lithium battery to an inverter is crucial for converting the stored DC (Direct ...

Oct 31, 2024 · Yes, you can connect an inverter to a lithium battery. Lithium batteries, particularly Lithium Iron Phosphate (LiFePO4) batteries, are well-suited for use with inverters due to their ...

## Contact Us

---

For catalog requests, pricing, or partnerships, please visit:  
<https://www.pdeozepv.pl>