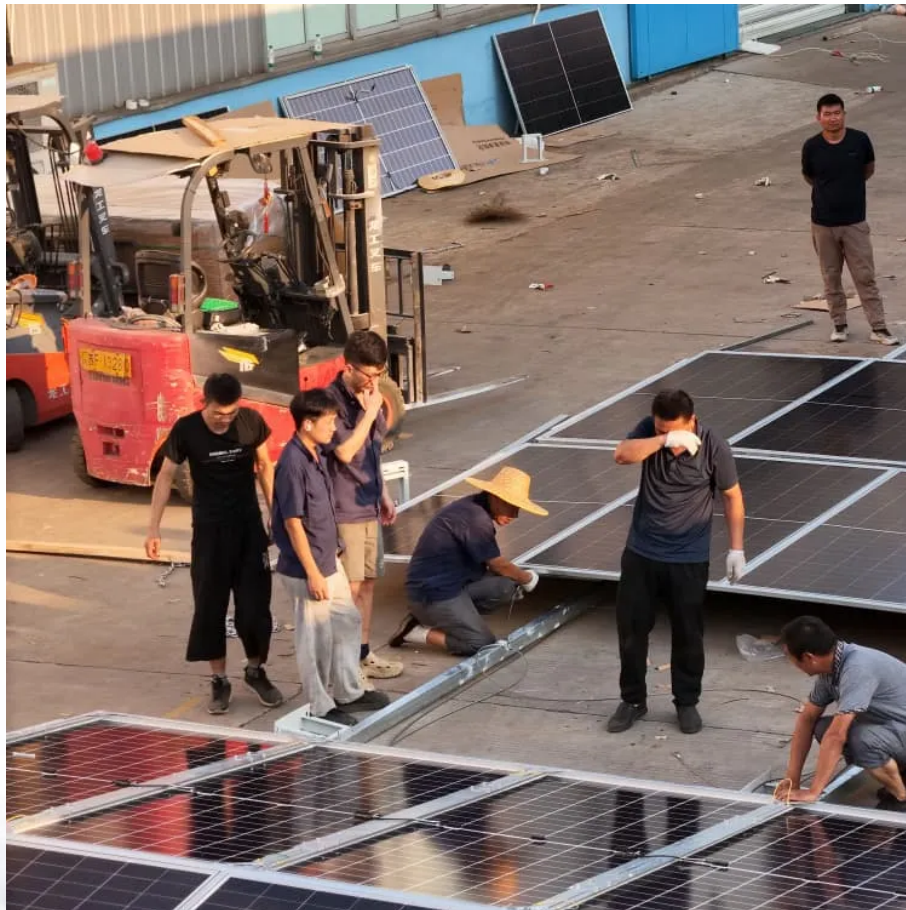


PDEOZE PowerContainer

Base station power distribution cabinet installation requirements



Overview

Who installs and maintains a substation?

DTE will install, own, and maintain the cables to feed the substation. The customer conduit/manhole must meet all DTE requirements. The customer will install, own, and maintain the conductors from the secondary make-up bus (DTE-owned interconnection point) of the substation to their Primary Installation (Service Point).

What are the requirements for a customer owned electrical installation?

All customer owned equipment shall be installed in accordance with the requirements of the latest revision of the National Electrical Code (NEC), or of any Federal, State, County or Municipal laws or statutes that may be in effect for governing electrical installations in the area where the installation is made.

Can a DTE substation be installed on a customer's premises?

In addition to the Primary Installation, there may be a DTE or customer owned high voltage substation (Class "I") on the customer's premises to reduce the utility service voltage to the customer's utilization voltage.

Do military bases need electrical power?

ELECTRICAL POWER REQUIREMENTS: GENERAL. Virtually all military bases have an existing overhead and underground distribution system that has been in service for many years. As part of any new design project, review the existing design with base personnel to determine which existing features should not be duplicated in future designs.

What are the requirements for a new electrical installation?

The customer's electrical system and its installation shall conform to the latest version of the National Electrical Code (NEC), IEEE National Electric Safety Code (NESC), local municipal codes, and DTE's requirements. New

installations: The customer will design, build, own, operate, and maintain the complete Primary Installation.

What should be included in a substation design analysis?

Address the following in the design analysis for the supply station/substation: Formal design. Substations require a formal design. Address the structure and foundation design, lightning protection, manholes and vaults, grounding, lighting, protective relaying, and the other electrical items listed below. Dual substation transformers.

Base station power distribution cabinet installation requirements

DTE will install, own, and maintain the cables to feed the substation. The customer conduit/manhole must meet all DTE requirements. The customer will install, own, and maintain the conductors from the secondary make-up bus (DTE-owned interconnection point) of the substation to their Primary Installation (Service Point).

All customer owned equipment shall be installed in accordance with the requirements of the latest revision of the National Electrical Code (NEC), or of any Federal, State, County or Municipal laws or statutes that may be in effect for governing electrical installations in the area where the installation is made.

In addition to the Primary Installation, there may be a DTE or customer owned high voltage substation (Class "I") on the customer's premises to reduce the utility service voltage to the customer's utilization voltage.

ELECTRICAL POWER REQUIREMENTS: GENERAL. Virtually all military bases have an existing overhead and underground distribution system that has been in service for many years. As part of any new design project, review the existing design with base personnel to determine which existing features should not be duplicated in future designs.

The customer's electrical system and its installation shall conform to the latest version of the National Electrical Code (NEC), IEEE National Electric Safety Code (NESC), local municipal codes, and DTE's requirements. New installations: The customer will design, build, own, operate, and maintain the complete Primary Installation.

Address the following in the design analysis for the supply station/substation: Formal design. Substations require a formal design. Address the structure and foundation

design, lightning protection, manholes and vaults, grounding, lighting, protective relaying, and the other electrical items listed below. Dual substation transformers.

Before beginning an underground installation, please read this installation guide. Please do not install an underground primary or secondary conduit system without first receiving a job sketch from the Power Company.

Before beginning an underground installation, please read this installation guide. Please do not install an underground primary or secondary conduit system without first receiving a job sketch ...

Standardized guidance has been prepared to assist engineers with unique installation requirements. Exterior electrical equipment design criteria are specified to ensure that a ...

These standards and requirements are based on relevant technical specifications and industry best practices to ensure the safety and reliability of equipment installation.

It is the Licensed Electrician Contractor's responsibility to be aware of the code requirements for the area of the installation. Any change or modification to our Electric Service Layout(s) or ...

This document contains the requirements and recommendations for loadbreak switchgear and meter compartments intended for installation as service equipment on the DTE Electric system.

Stay up to date as you design, install and inspect with current requirements for wiring, overcurrent protection, grounding and equipment. The code you know and use--revamped to keep pace ...

Each has its own unique standards and application guidelines, and one facet of good

power system design is the knowledge of when to apply each type of equipment and the limitations of ...

Installation must follow design drawings, starting with easily accessible points and using appropriate machinery. Professional supervisors shall oversee the process to eliminate ...

These standards and requirements are based on relevant technical specifications and industry best practices to ensure the safety and reliability of equipment installation.

Such vaults shall comply with the requirements of Article 450 of the NEC and such local and Company requirements as may be in force at the time the installation is made.

101. Code Requirements The company, by law (Title 35A M.R.S.A. Section 2305A), is required to design, construct, operate and maintain its lines and equipment in ...

Stay up to date as you design, install and inspect with current requirements for wiring, overcurrent protection, grounding and equipment. The code you know and use--revamped to keep pace ...

Contact Us

For catalog requests, pricing, or partnerships, please visit:
<https://www.pdeozepv.pl>