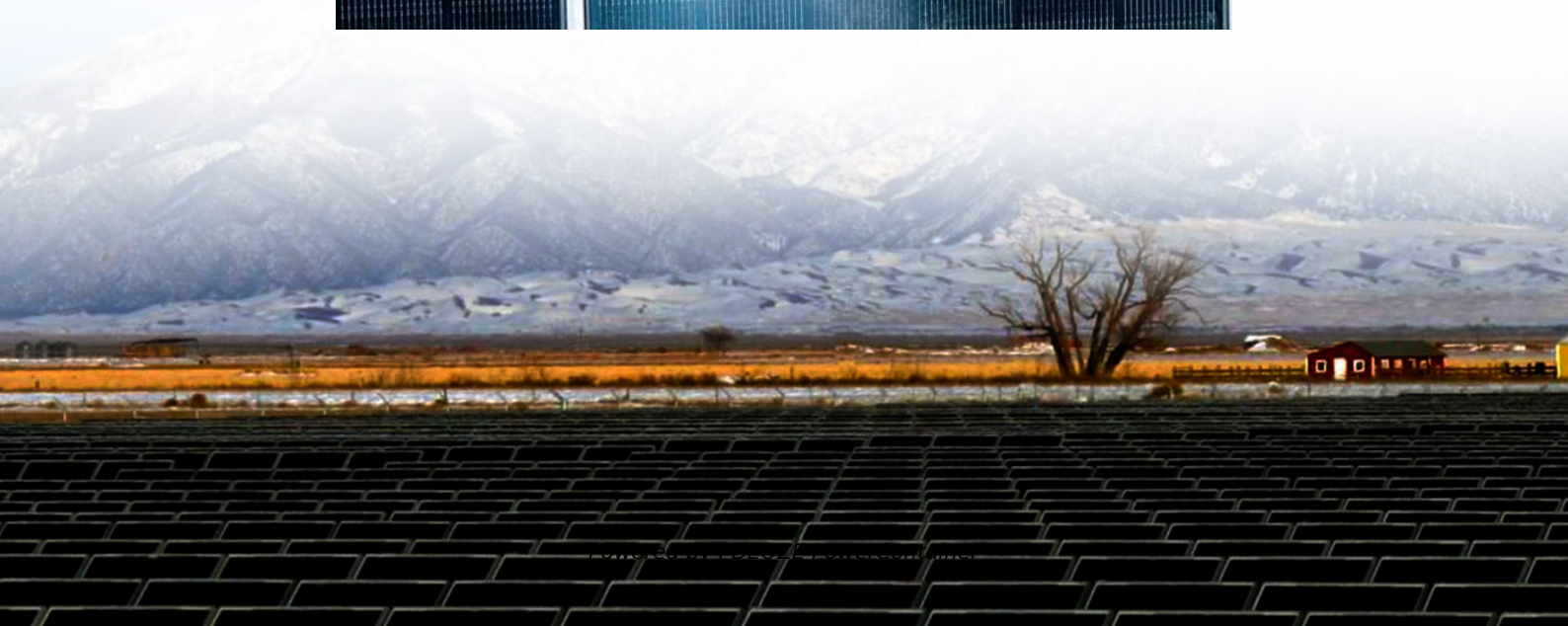
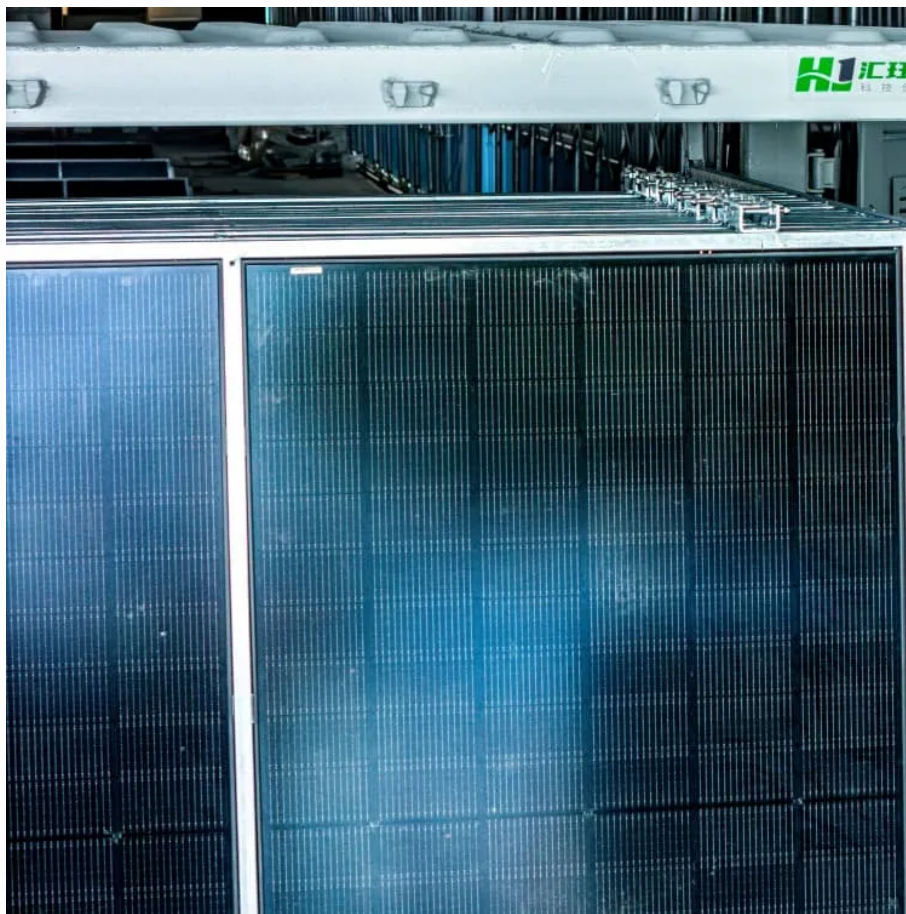


## PDEOZE PowerContainer

# Arrangement of solar panels



## Overview

---

The configurations for installing solar panels encompass multiple aspects, including the layout, orientation, and tilt angle, which significantly influence energy production, efficiency, and installation costs. What is a solar cell arrangement?

A solar cell arrangement is known as solar module or solar panel where solar panel arrangement is known as photovoltaic array. It is important to note that with the increase in series and parallel connection of modules the power of the modules also gets added. Related Posts: [How to Wire Solar Panels in Series-Parallel Configuration?](#)

.

How are solar panels arranged?

Each panels are arranged without causing any partial shading with each other. For obtaining maximum energy, panels are separately connected with solar tracking systems. Panels are facing towards the east pole direction. Fig.5 shows the 3D arrangement of a three layer solar PV panels with solar tracking system.

What are the different solar panels arranged in a single layer?

**DIFFERENT PANEL ARRANGEMENTS** In order to get maximum performance from the solar PV modules, the panels should be free from partial shading losses. So the arrangement of solar PV modules are a major concern to meet the demand of the consumer. Single layer solar PV system Three solar panels are arranged in a single layer with a tilt of 130.

How to arrange solar modules in a photovoltaic power station?

There are two ways of arranging solar modules in photovoltaic power stations, horizontal and vertical. Horizontal means that the long side of the solar module is parallel to the east-west direction, while vertical means that the short side is parallel to the east-west direction. Whether to use horizontal or

vertical depends on different situations.

How to calculate solar panels connected in parallel configuration?

The following figure shows solar panels connected in parallel configuration. If the current  $IM_1$  is the maximum power point current of one module and  $IM_2$  is the maximum power point current of other module then the total current of the parallel-connected module will be  $IM_1 + IM_2$ .

How to design a solar panel?

The spatial layout design of PV panels starts with identification of rooftop areas suitable for the panel installation in a GIS. Based on the identified suitable areas, the appropriate candidate panel sites are identified. Two important assumptions are made in this study for simplifying the illustration.

## Arrangement of solar panels

---

A solar cell arrangement is known as solar module or solar panel where solar panel arrangement is known as photovoltaic array. It is important to note that with the increase in series and parallel connection of modules the power of the modules also gets added. Related Posts: [How to Wire Solar Panels in Series-Parallel Configuration?](#)

Each panels are arranged without causing any partial shading with each other. For obtaining maximum energy, panels are separately connected with solar tracking systems. Panels are facing towards the east pole direction. Fig.5 shows the 3D arrangement of a three layer solar PV panels with solar tracking system.

**DIFFERENT PANEL ARRANGEMENTS** In order to get maximum performance from the solar PV modules, the panels should be free from partial shading losses. So the arrangement of solar PV modules are a major concern to meet the demand of the consumer. Single layer solar PV system Three solar panels are arranged in a single layer with a tilt of 130.

There are two ways of arranging solar modules in photovoltaic power stations, horizontal and vertical. Horizontal means that the long side of the solar module is parallel to the east-west direction, while vertical means that the short side is parallel to the east-west direction. Whether to use horizontal or vertical depends on different situations.

The following figure shows solar panels connected in parallel configuration. If the current  $IM1$  is the maximum power point current of one module and  $IM2$  is the maximum power point current of other module then the total current of the parallel-connected module will be  $IM1 + IM2$ .

The spatial layout design of PV panels starts with identification of rooftop areas suitable for the panel installation in a GIS. Based on the identified suitable areas, the appropriate

candidate panel sites are identified. Two important assumptions are made in this study for simplifying the illustration.

Aug 15, 2023 · The arrangement of solar panels is an important factor in the efficiency of the system. In this article, we will explore the different ways in which solar panels can be arranged ...

Oct 27, 2025 · Here, three different arrangements of solar PV modules are done on a standalone system. In this work, the maximum generation was obtained from a three layer solar PV ...

When it comes to maximizing the efficiency and effectiveness of solar energy systems, the size and arrangement of solar panel arrays play a crucial role. Understanding how to optimize ...

3 days ago · A solar cell arrangement is known as solar module or solar panel where solar panel arrangement is known as photovoltaic array. It is important to note that with the increase in ...

May 1, 2020 · However, to the best of the authors' knowledge, few studies have focused on solar PV panels' spatial layout although it may highly affect whether a solar panel system can ...

Aug 6, 2024 · 1. The configurations for installing solar panels encompass multiple aspects, including the layout, orientation, and tilt angle, which significantly influence energy production, efficiency, and installation costs. ...

Comparing Horizontal and Vertical Arrangements of Solar Modules in Photovoltaic Power Stations There are two ways of arranging solar modules in photovoltaic power stations, horizontal and ...

Aug 6, 2024 · 1. The configurations for installing solar panels encompass multiple aspects, including the layout, orientation, and tilt angle, which significantly influence energy production, ...

Comparing Horizontal and Vertical Arrangements of Solar Modules in Photovoltaic Power Stations There are two ways of arranging solar modules in photovoltaic power stations, horizontal and vertical. Horizontal means ...

Aug 15, 2023 · The arrangement of solar panels is an important factor in the efficiency of the system. In this article, we will explore the different ways in which solar panels can be arranged to maximize their output and make ...

5 days ago · Optimize your solar panel array layout for maximum efficiency. Learn about key components and factors to consider in our expert guide.

Oct 17, 2023 · The arrangement and requirements of solar panels depend on various factors, including the available space, the specific solar panel technology, the energy requirements, and the location's solar irradiance. ...

Feb 6, 2025 · A well-designed solar installation ensures optimal energy yield by aligning panels in the best orientation and adjusting tilt angles for maximum sunlight absorption.

Oct 17, 2023 · The arrangement and requirements of solar panels depend on various factors, including the available space, the specific solar panel technology, the energy requirements, ...

## Contact Us

---

For catalog requests, pricing, or partnerships, please visit:  
<https://www.pdeozepv.pl>