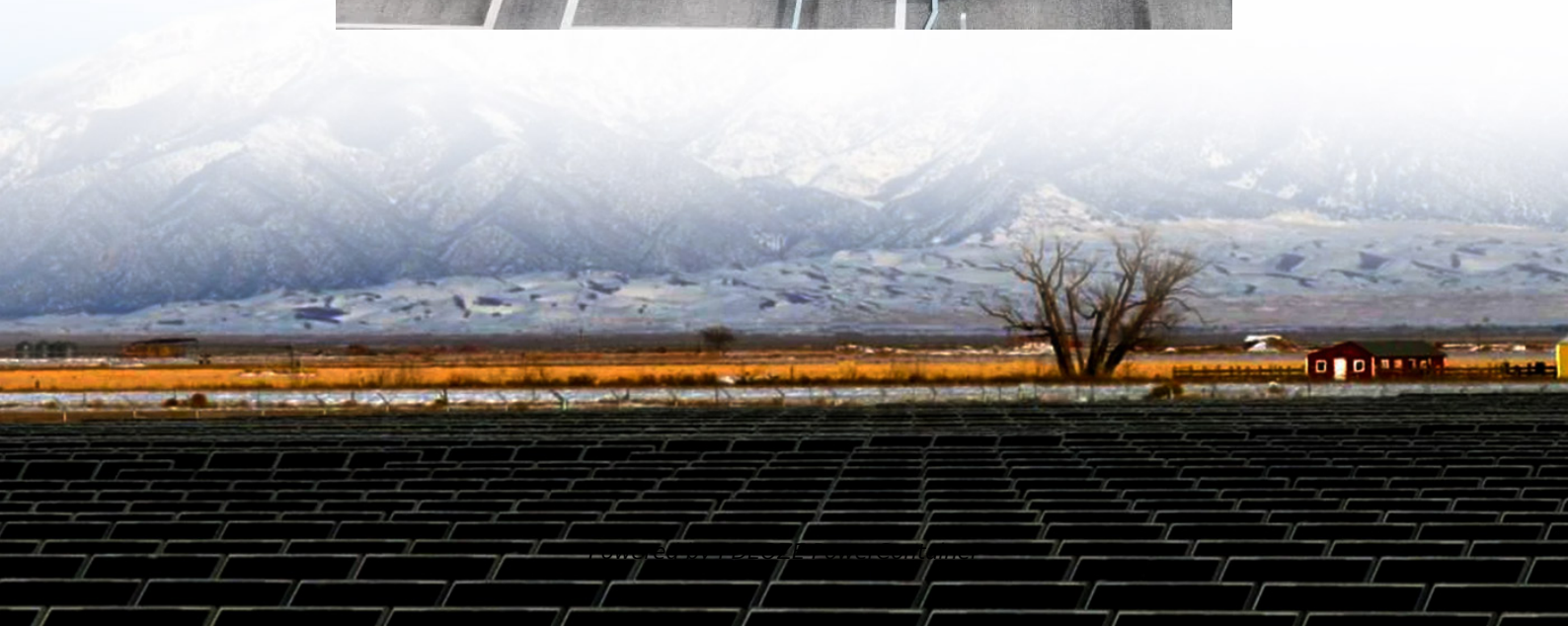
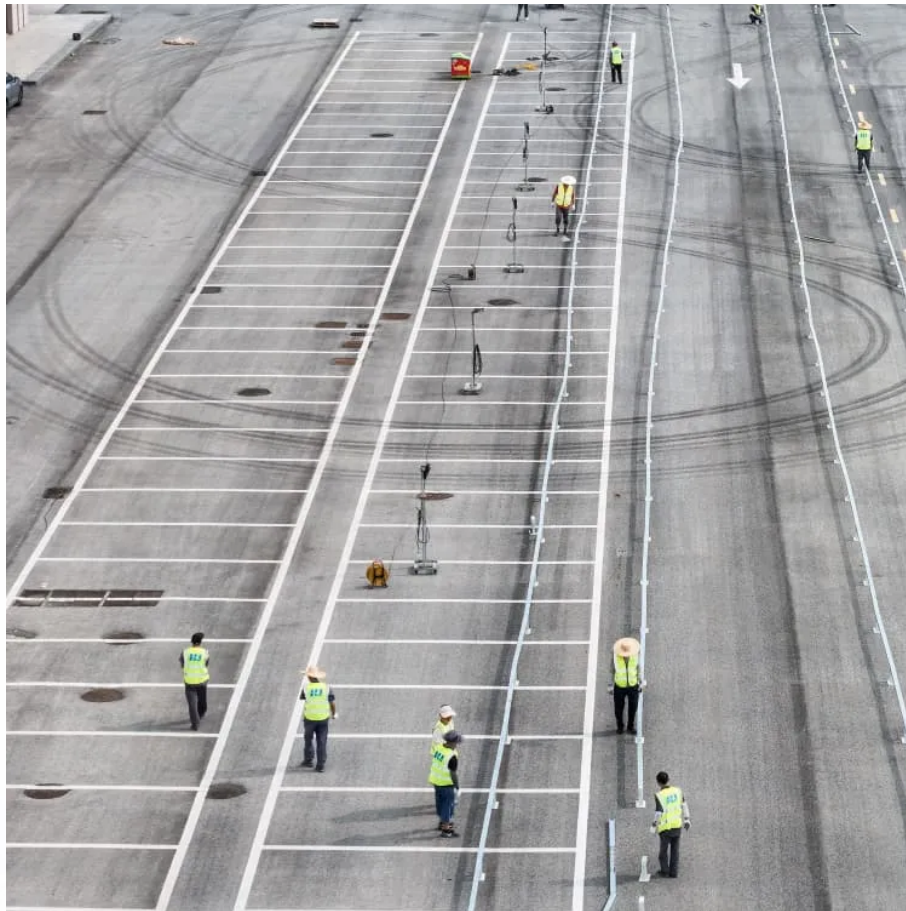


## PDEOZE PowerContainer

# 400W solar panel weight



## Overview

---

A standard 400w solar panel weighs between 45 to 55 pounds (20 to 25 kilograms). This weight includes the frame, typically made of aluminum, and the photovoltaic cells, often constructed from silicon. The weight also considers the protective glass layer and the backing material.

## 400W solar panel weight

---

As we can see, 100W solar panels weigh about 10-15 lbs, 200W solar panels about 20-30 lbs, and 400W Tesla roof panel weighs 51.8 lbs. The most important thing, however, is that we see that ...

When you look at 400 watt solar panels, knowing the key specs is important. These specs include size, efficiency, and more. They help you choose the right panel for your project. ...

Most standard solar panels come in 60-cell grids and weigh between 33 and 50 pounds, although panels can vary greatly in weight and size. Commercial panels are heavier ...

As we can see, 100W solar panels weigh about 10-15 lbs, 200W solar panels about 20-30 lbs, and 400W Tesla roof panel weighs 51.8 lbs. The most important thing, however, is that we see that the solar panel weight per ...

Weight is integral to the portability of any solar panel and this product is no exception. It weighs only 3.2kg which is a remarkable achievement by its manufacturers. This ...

The weight of a 400w solar panel can vary based on the manufacturer and the materials used in its construction. A standard 400w solar panel weighs between 45 to 55 ...

Discover the exact dimensions of 300W, 400W, and 1kW solar panels. Learn their size, weight, and space requirements before you buy. Plus, calculate solar panel costs.

When it comes to solar panels, size can vary significantly depending on the wattage and technology used. A typical 400-watt solar panel measures approximately 1.7 meters by

1 meter (or about 67 inches by 39 inches).

Discover the exact dimensions of 300W, 400W, and 1kW solar panels. Learn their size, weight, and space requirements before you buy. Plus, calculate solar panel costs.

Most standard solar panels come in 60-cell grids and weigh between 33 and 50 pounds, although panels can vary greatly in weight and size. Commercial panels are heavier than residential types because they have a higher ...

Weight is integral to the portability of any solar panel and this product is no exception. It weighs only 3.2kg which is a remarkable achievement by its manufacturers. This 18V solar panel is so powerful that it can power all of ...

Find the exact solar panel size & weight in our 2025 guide. Our complete chart compares models by ft/cm and lbs/kg to help you plan your installation.

Comprehensive guide to JA Solar 400W solar panels. Compare models, specifications, pricing, and performance. Expert analysis and buying recommendations.

Typically, 300 to 360 W panels (60 cells) are still used in residential applications, although panels pushing up to 400 to 500 W panels (72 cells) are also not uncommon. ...

Typically, 300 to 360 W panels (60 cells) are still used in residential applications, although panels pushing up to 400 to 500 W panels (72 cells) are also not uncommon. Commercial solar systems usually use panels ...

When it comes to solar panels, size can vary significantly depending on the wattage and technology used. A typical 400-watt solar panel measures approximately 1.7 ...

When you look at 400 watt solar panels, knowing the key specs is important. These

specs include size, efficiency, and more. They help you choose the right panel for your project. This way, you get the most out of your solar ...

## Contact Us

---

For catalog requests, pricing, or partnerships, please visit:  
<https://www.pdeozepv.pl>