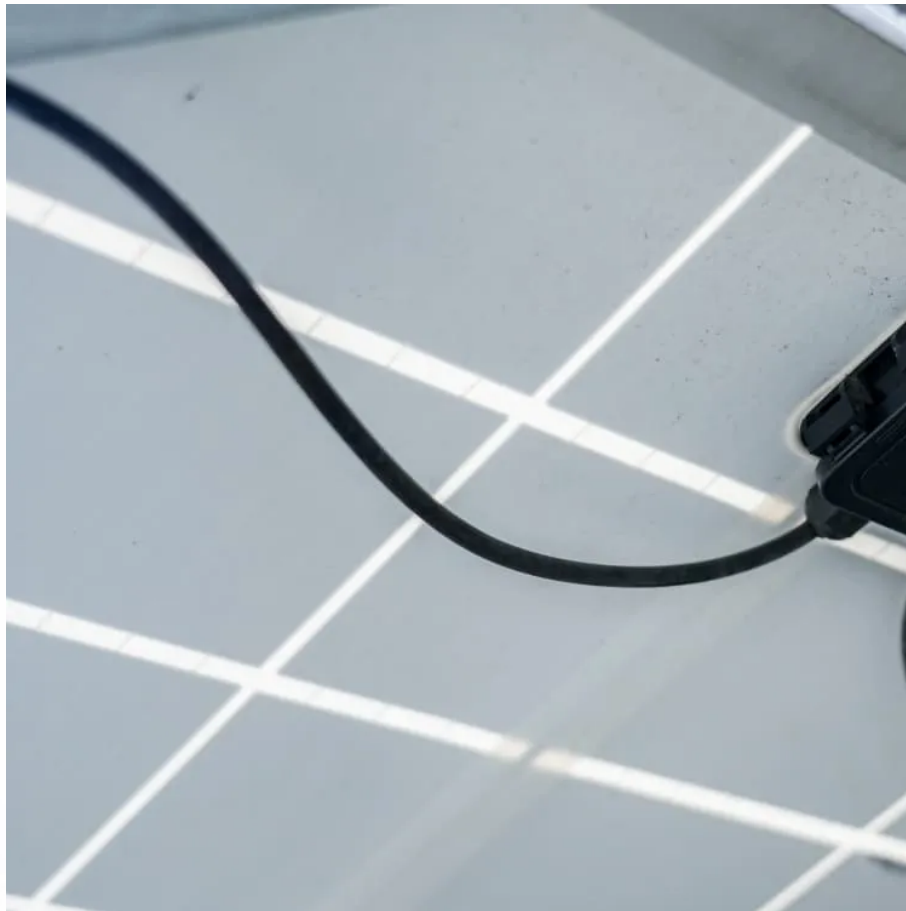


PDEOZE PowerContainer

20w solar panel output current



Overview

A 20W solar panel typically produces a current of approximately 1.67 amps under optimal sunlight conditions. This calculation is based on Ohm's law, where current (I) can be derived from power (P) divided by voltage (V).

A 20W solar panel typically produces a current of approximately 1.67 amps under optimal sunlight conditions. This calculation is based on Ohm's law, where current (I) can be derived from power (P) divided by voltage (V).

Use our solar panel amps calculator to calculate the solar panel amps or convert solar panel watts to amps. How to use this calculator?

Solar panel output: Enter the total capacity of your solar panel (Watts). Vmp: Is the operating voltage of the solar panel which you can check at the back side of.

How much current does a 20w solar panel have?

1. A 20W solar panel typically produces a current of approximately 1.67 amps under optimal sunlight conditions. This calculation is based on Ohm's law, where current (I) can be derived from power (P) divided by voltage (V). The standard output voltage.

In this article, we will explore how many amps a 20 watt solar panel produces and what this means for homeowners in the UK. To understand how many amps a 20 watt solar panel produces, it is important to first understand the relationship between watts, volts, and amps. Watts are a measure of power.

20-watt solar panels are one of the smallest solar panel sizes at the lowest price. They are helpful for many applications in the home and on the go. Here are some of the key aspects of 20-watt solar panels this article covers; If you've got a 20-watt solar panel or are interested in what they can.

We'll cover voltage, current, and how to connect multiple panels together, always keeping an eye on what matters most: protecting your equipment while maximizing its performance. The two most critical specifications you'll

encounter are voltage and current. Understanding these is like learning the.

The Wattage rating of a solar panel is the most fundamental rating, representing the maximum power output of the solar panel under ideal conditions. You'll often see it referred to as "Rated Power", "Maximum Power", or "Pmax", and it's measured in watts or kilowatts peak (kWp). For example, the.

20w solar panel output current

To calculate solar panel amperage, identify their rated power output in watts, which serves as a comparison of their electricity-generating potential. The panel's operating voltage is key to calculating current ...

A 20W solar panel typically generates around 1.66 amps under ideal conditions, given that power (in watts) is calculated by multiplying voltage (in volts) by current (in amps).

Decode solar panels specifications to safely connect your panels to power station or charge controller. This quick guide unlocks full solar potential.

For example, a solar panel with a voltage of 20V and an amperage of 5A has a wattage of 100W. This means the panel can produce 100 watts of power under optimal ...

Under optimum conditions, a 20W solar panel can create 1.34 amps per hour. For example, under perfect conditions, the panel will produce 20 Watts for 7 hours per day, 7 days ...

OP says it came with a 20W panel, that operates at 24v and produces 0.56A at most. Assuming this panel actually produces more like 36V, the $36V \times 0.56A = 20.16$ watts.

Under optimum conditions, a 20W solar panel can create 1.34 amps per hour. For example, under perfect conditions, the panel will produce 20 Watts for 7 hours per day, 7 days per week, for 980 Watts. To reduce ...

A 20W solar panel typically produces a current of approximately 1.67 amps under optimal sunlight conditions. This calculation is based on Ohm's law, where current (I) can

be ...

Decode solar panels specifications to safely connect your panels to power station or charge controller. This quick guide unlocks full solar potential.

One of the most important factors to consider when choosing a solar panel is its output, which is typically measured in amps. In this article, we will explore how many amps a 20 watt solar ...

Use our solar panel amps calculator to calculate the solar panel amps or convert solar panel watts to amps.

To calculate solar panel amperage, identify their rated power output in watts, which serves as a comparison of their electricity-generating potential. The panel's operating ...

The Maximum Power Current rating (I_{mp}) on a solar panel indicates the amount of current produced by a solar panel when it's operating at its maximum power output (P_{max}) under ideal conditions.

The Maximum Power Current rating (I_{mp}) on a solar panel indicates the amount of current produced by a solar panel when it's operating at its maximum power output (P_{max}) ...

Contact Us

For catalog requests, pricing, or partnerships, please visit:
<https://www.pdeozepv.pl>